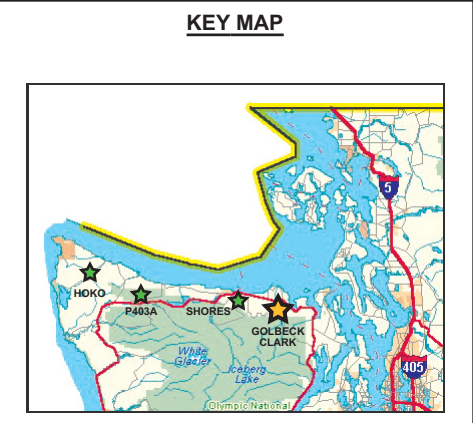
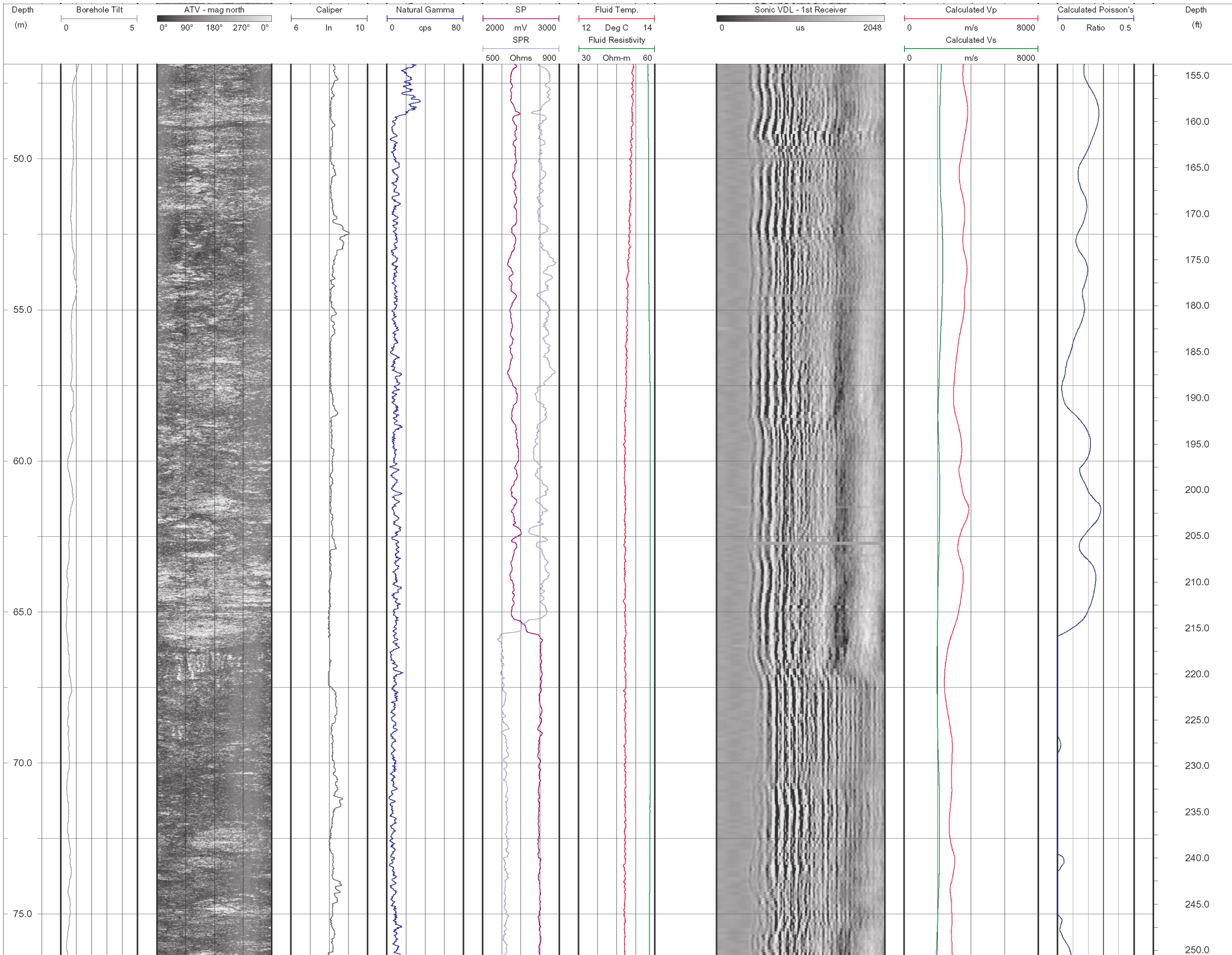



DRAWING NO. 0431326001g17.fh11 DATE 12/20/04 DRAWN BY EL



INSTRUMENTATION
Mount Sopris Instruments (MSI)
 MGX-II Logging System
 ALT ABI-40 Acoustic Televiewer
 3-Arm Caliper (MSI model 2PCA-1000)
 Natural Gamma, SP, SPR (MSI model 2PGA-1000)
 Fluid Temperature/Resistivity (MSI model 2PFA-1000)
 Full Waveform Sonic (MSI model 2SAA-1000/F)

NOTES
 1. Depths relative to ground surface
 2. Vertical boreholes drilled with 8" air rotary bit

COORDINATES
 LATITUDE: N48.05300
 LONGITUDE: W123.13296


GOLDER ASSOCIATES INC.
 18300 NE UNION HILL ROAD, STE. 200
 REDMOND, WA USA 98052-3333
 TEL: (425) 883-0777
 FAX: (425) 882-5498
 EMAIL: dsylwester@golder.com
 hcrow@golder.com

SUBMITTED TO:
UNAVCO

PROJECT:
EARTHSCOPE BOREHOLE LOG/WA

TITLE:
**CLARK-EAST
 GEOPHYSICS LOGS**

PROJECT	043-1326	DESIGN	HC	12/06/04
FILE No.	0431326004fg17.fh11	GPHX	EL	12/06/04
REV.	0	CHECK	-	-
SCALE	AS SHOWN	REVIEW	-	-

SHEET 02/05