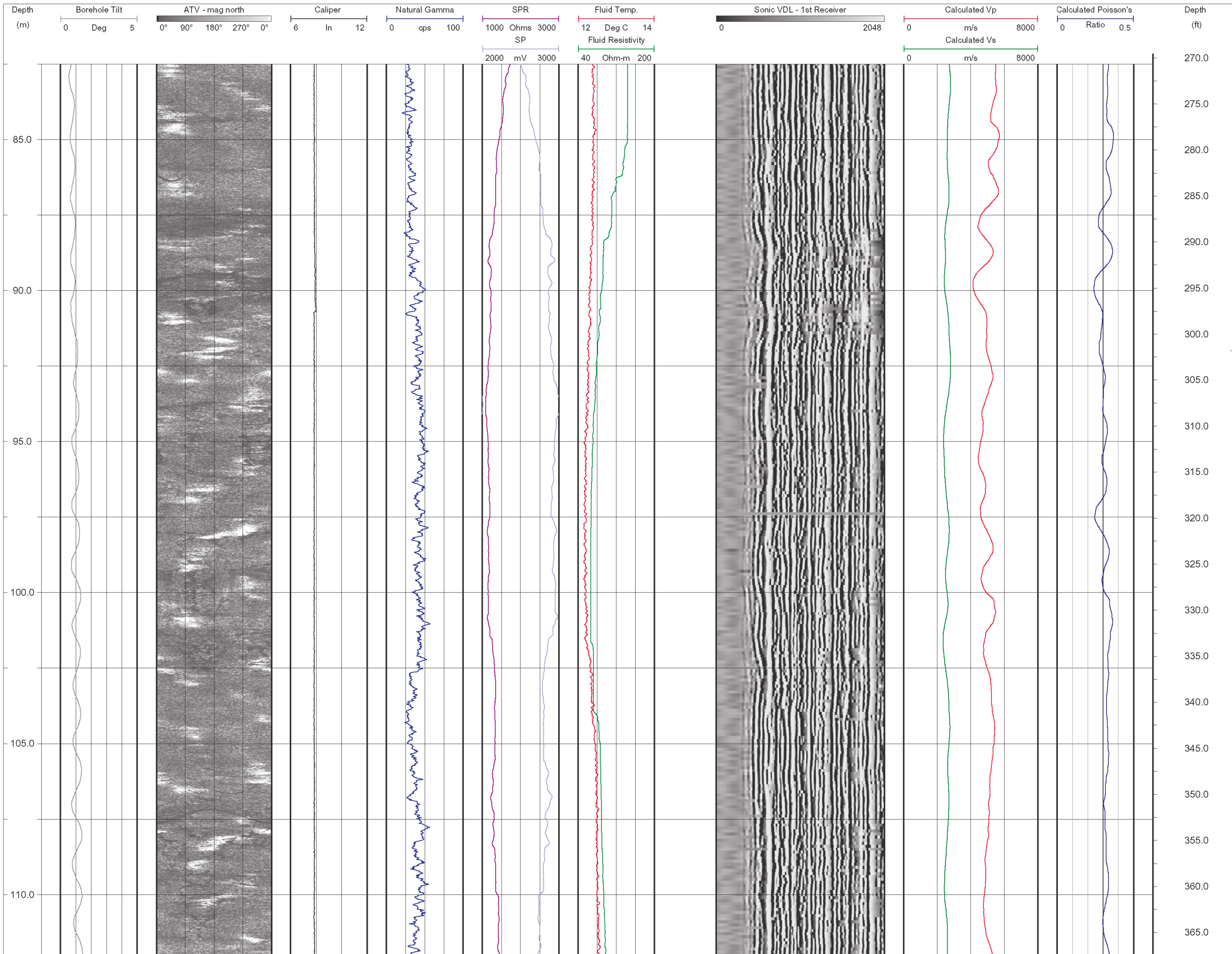
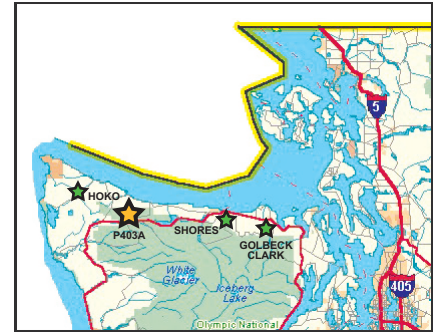


DRAWING NO. 0431326001g05.fh11 DATE 12/06/04 DRAWN BY EL



**KEY MAP**



**INSTRUMENTATION**

**Mount Sopris Instruments (MSI)**  
 MGX-II Logging System  
 ALT ABI-40 Acoustic Televiewer  
 3-Arm Caliper (MSI model 2PCA-1000)  
 Natural Gamma, SP, SPR (MSI model 2PGA-1000)  
 Fluid Temperature/Resistivity (MSI model 2PFA-1000)  
 Full Waveform Sonic (MSI model 2SAA-1000/F)

**NOTES**

1. Depths relative to ground surface
2. Vertical boreholes drilled with 8" air rotary bit

**COORDINATES**

LATITUDE: N48.06302  
 LONGITUDE: W124.14115



**GOLDER ASSOCIATES INC.**  
 18300 NE UNION HILL ROAD, STE. 200  
 REDMOND, WA USA 98052-3333  
 TEL: (425) 883-0777  
 FAX: (425) 882-5498  
 EMAIL: dsylwester@golder.com  
 hcrow@golder.com

SUBMITTED TO:

UNAVCO

PROJECT:

EARTHSCOPE BOREHOLE LOG/WA

TITLE:

**P403 GEOPHYSICS LOGS**

PROJECT	043-1326	DESIGN	HC	12/06/04
FILE No.	0431326004g05.fh11	GPHX	EL	12/06/04
REV.	0	CHECK	-	-
SCALE	AS SHOWN	REVIEW	-	-

**SHEET 04/06**