



5201 Woodmere Drive, Bakersfield, CA 93313-- www.welenco.com--(800) 445-9914
 California Contractor's License No. 722373

FULL WAVEFORM SONIC - VDL LOG

FILING NO.	COMPANY <u>UNAVCO</u>		
	WELL <u>Sibley B-054</u>		
	FIELD <u>Orinda</u>		
	STATE <u>California</u>	COUNTY <u>Contra Costa</u>	
	LOCATION: <u>111 Old Tunnel Rd.</u>		OTHER SERVICES: HIRAT ELGR CALIPER
JOB NO. 9608	SEC: <u>9</u> TWP: <u>1S</u> RGE: <u>3W</u> LAT.: <u>37° 51' 37.8"</u> LONG.: <u>122° 11' 59.7"</u> MERIDIAN.: <u>Mt. Diablo</u>		

Permanent Datum: Ground Level, Elev. 1398 Ft. Elev.: K.B. _____ Ft.
 Log Measured From: Ground Level, 0 Ft. Above Perm. Datum D.F. _____ Ft.
 Drilling Measured From: Ground Level G.L. 1398 Ft.

Run	One						
Date	Aug. 13, 2008						
Depth-Driller	567	Ft		Ft		Ft	Ft
Depth-Logger	567	Ft		Ft		Ft	Ft
Top Logged Interval	220	Ft		Ft		Ft	Ft
Btm. Logged Interval	567	Ft		Ft		Ft	Ft
Casing-Driller	6	In @ 380	Ft	In @	Ft	In @	Ft
Casing-Logger	6	In @ 380	Ft	In @	Ft	In @	Ft
Bit Size	6	In		In		In	In
Time On Bottom	1005						
Type Fluid In Hole	Water						
Density	Viscosity						
pH	Fluid Loss		ml		ml		ml
Source of Sample	Tank						
Rm @ Measured Temp.	11.3	@ 75	°F	@	°F	@	°F
Rmf @ Measured Temp.	9	@ 75	°F	@	°F	@	°F
Rmc @ Measured Temp.		@	°F	@	°F	@	°F
Source Rmf	Rmc						
Rm @ BHT		@	°F	@	°F	@	°F
Time Since Circulation			Hr		Hr		Hr
Max. Rec. Temp.			°F		°F		°F
Van No.	Location	L-18	SVG				
Recorded By	Mitch Tullis						
Witnessed By	Liz B.						

Miscellaneous Information

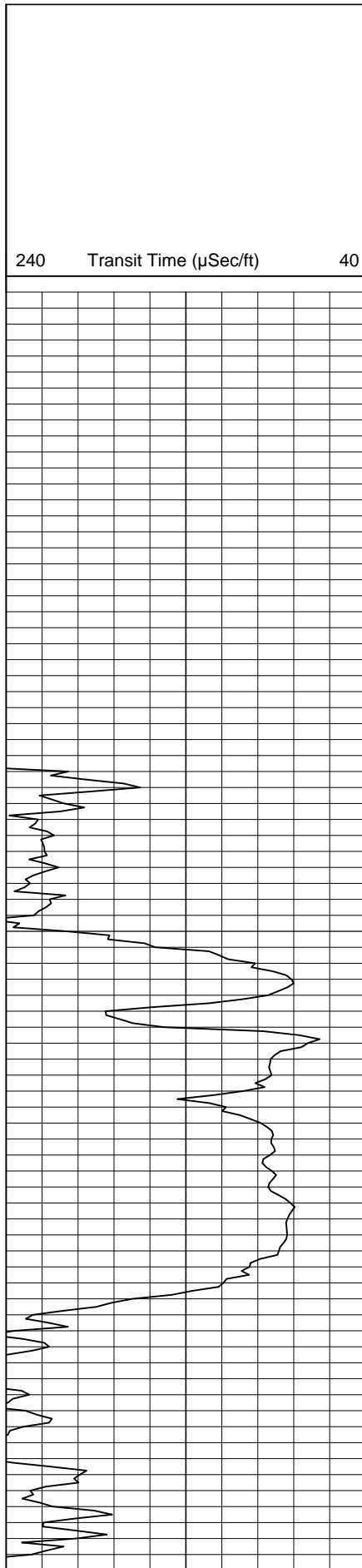
A recreational GPS accurate to +/- 45 feet set for Datum NAD27 was used to calculate Latitude, Longitude & Elevation values. The Section, Township, and Range then determined using the TRS program (TRS accuracy is not guaranteed). The TRS program converts Latitude and Longitude to Section, Township, and Range. The NOTICE at the bottom of this heading also applies.

High Tension Power Lines 250' Over Well Site

Drilled by: Stadelis Group

NOTICE

All interpretations are opinions based on inferences from electrical and other measurements and we do not guarantee the accuracy or correctness of any verbal or written interpretation, and we shall not, except in the case of gross or willful negligence on our part, be liable or responsible for any loss, costs, damages or expenses incurred or sustained by anyone resulting from any interpretation made by one of our officers, agents or employees. These interpretations are also subject to our General Terms and Conditions as set out in our current Price Schedule.
welenco, inc. August 13, 2008



240 Transit Time (μ Sec/ft) 40

DEPTHS

5 in/100ft

FULL WAVEFORM SONIC - VDL LOG

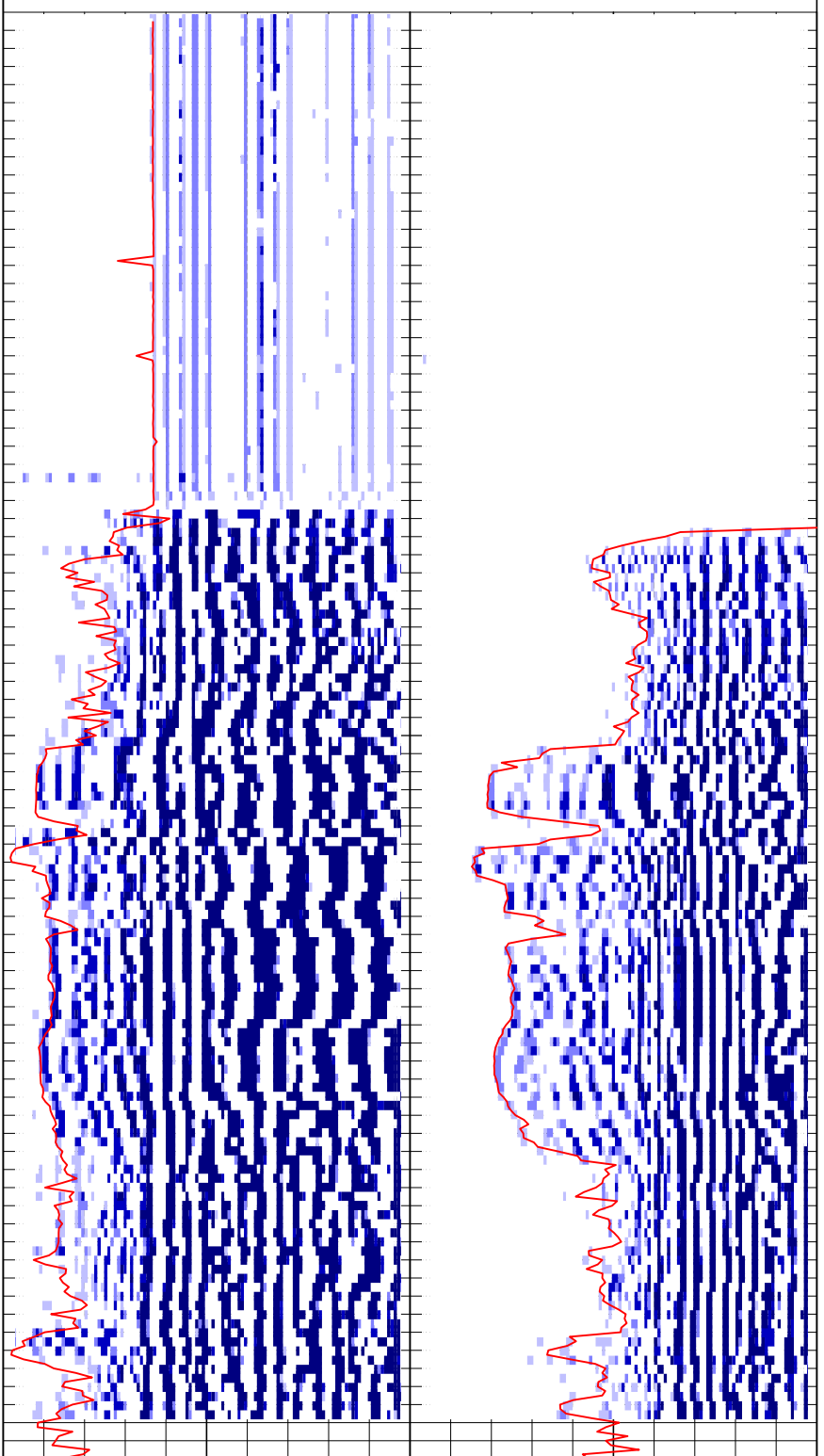
200	Near P Wave (μ secs)	1200	200	Far P Wave (μ secs)	1200
200	Near Variable Density (μ secs)	1200	200	Far Variable Density (μ secs)	1200

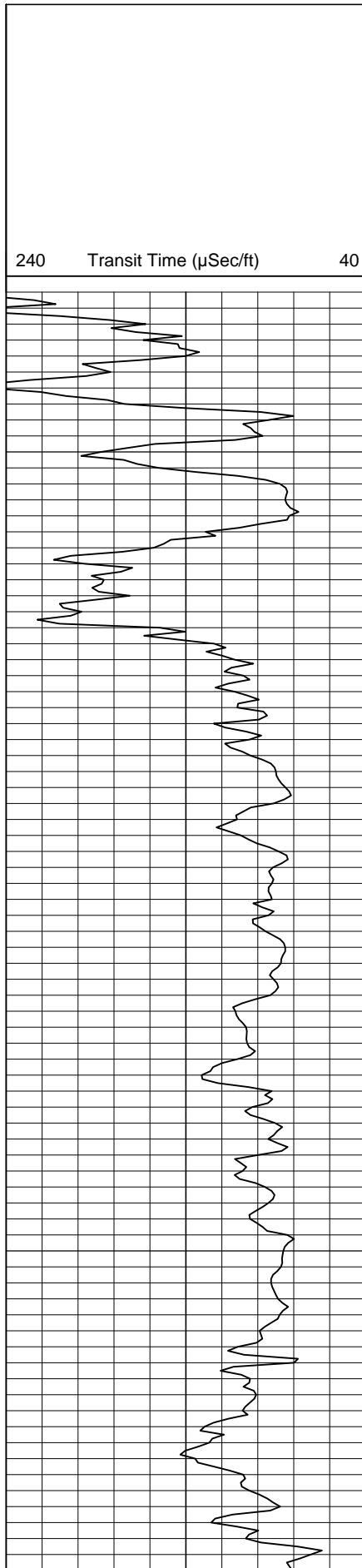
220

250

300

350





DEPTHS

5 in/100ft

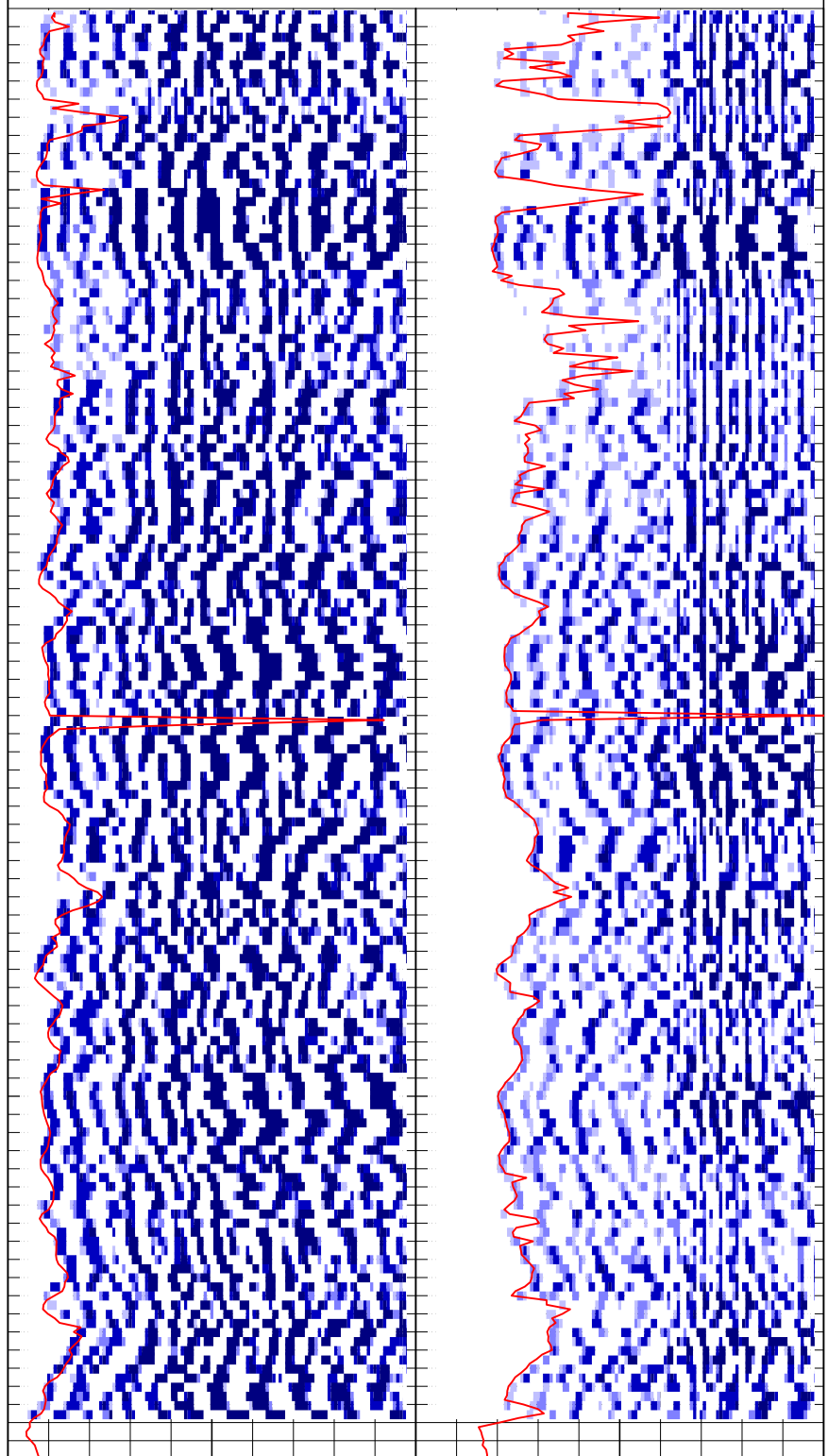
FULL WAVEFORM SONIC - VDL LOG

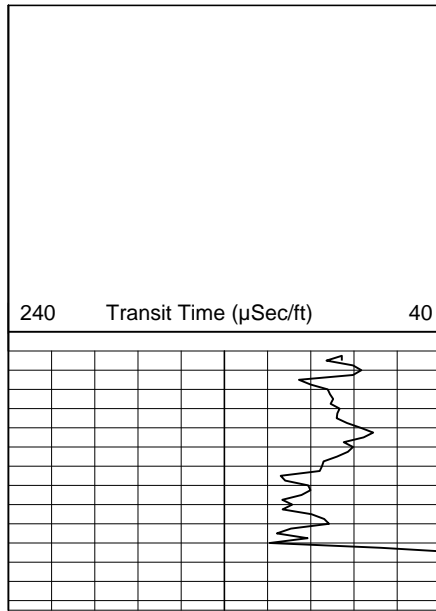
200	Near P Wave (µsecs)	1200	200	Far P Wave (µsecs)	1200
200	Near Variable Density (µsecs)	1200	200	Far Variable Density (µsecs)	1200

400

450

500





FULL WAVEFORM SONIC - VDL LOG

200 Near P Wave (µsecs) 1200 200 Far P Wave (µsecs) 1200

200 Near Variable Density (µsecs) 1200 200 Far Variable Density (µsecs) 1200

550

