



5201 Woodmere Drive, Bakersfield, CA 93313-- www.welenco.com--(800) 445-9914  
California Contractor's License No. 722373

## ELECTRIC - GAMMA RAY - TEMPERATURE LOG

FILING NO.	COMPANY <u>UNAVCO</u>		
	WELL <u>B-060</u>		
	FIELD <u>San Juan Bautista</u>		
	STATE <u>California</u>	COUNTY <u>San Benito</u>	
	LOCATION: <u>San Juan Road</u>		OTHER SERVICES: <u>Caliper</u> <u>Sonic</u> <u>BHTV</u>
JOB NO. <b>6948</b>	SEC: <u>3</u> TWP: <u>13S</u> RGE: <u>4E</u> LAT.: <u>36° 49' 21.6"</u> LONG.: <u>121° 31' 35.4"</u> MERIDIAN.: <u>Mt. Diablo</u>		

Permanent Datum: Ground Level, Elev. 305 Ft. Elev.: K.B. \_\_\_\_\_ Ft.  
 Log Measured From: Top of Casing, 0 Ft. Above Perm. Datum D.F. \_\_\_\_\_ Ft.  
 Drilling Measured From: Ground Level G.L. 305 Ft.

Run	<u>One</u>						
Date	<u>Jan. 13, 2007</u>						
Depth-Driller	<u>800</u>	Ft		Ft		Ft	Ft
Depth-Logger	<u>800</u>	Ft		Ft		Ft	Ft
Top Logged Interval	<u>480</u>	Ft		Ft		Ft	Ft
Btm. Logged Interval	<u>799</u>	Ft		Ft		Ft	Ft
Casing-Driller	<u>6.25</u> In @ <u>490</u>	Ft		In @	Ft	In @	Ft
Casing-Logger	<u>6.25</u> In @ <u>490</u>	Ft		In @	Ft	In @	Ft
Bit Size	<u>6</u>	In		In		In	In
Time On Bottom	<u>11:10 AM</u>						
Type Fluid In Hole	<u>Bentonite</u>						
Density	Viscosity						
pH	Fluid Loss						
			ml		ml		ml
Source of Sample	<u>Tank</u>						
Rm @ Measured Temp.	<u>10.0</u>	@	<u>75</u> °F	@	°F	@	°F
Rmf @ Measured Temp.	<u>9.3</u>	@	<u>75</u> °F	@	°F	@	°F
Rmc @ Measured Temp.		@	°F	@	°F	@	°F
Source Rmf	Rmc						
	<u>meas</u>						
Rm @ BHT		@	°F	@	°F	@	°F
Time Since Circulation	<u>2</u>	Hr		Hr		Hr	Hr
Max. Rec. Temp.	<u>66.5</u>	°F		°F		°F	°F
Van No.	<u>LV-1</u>	Location	<u>Bfld</u>				
Recorded By	<u>Dan Ihde</u>						
Witnessed By	<u>Alan Stroeve</u>						

# Miscellaneous Information

A recreational GPS accurate to +/- 45 feet set for Datum NAD27 was used to calculate Latitude, Longitude & Elevation values. The Section, Township, and Range then determined using the TRS program (TRS accuracy is not guaranteed). The TRS program converts Latitude and Longitude to Section, Township, and Range. The NOTICE at the bottom of this heading also applies.

Drilled By: Cascade Drilling

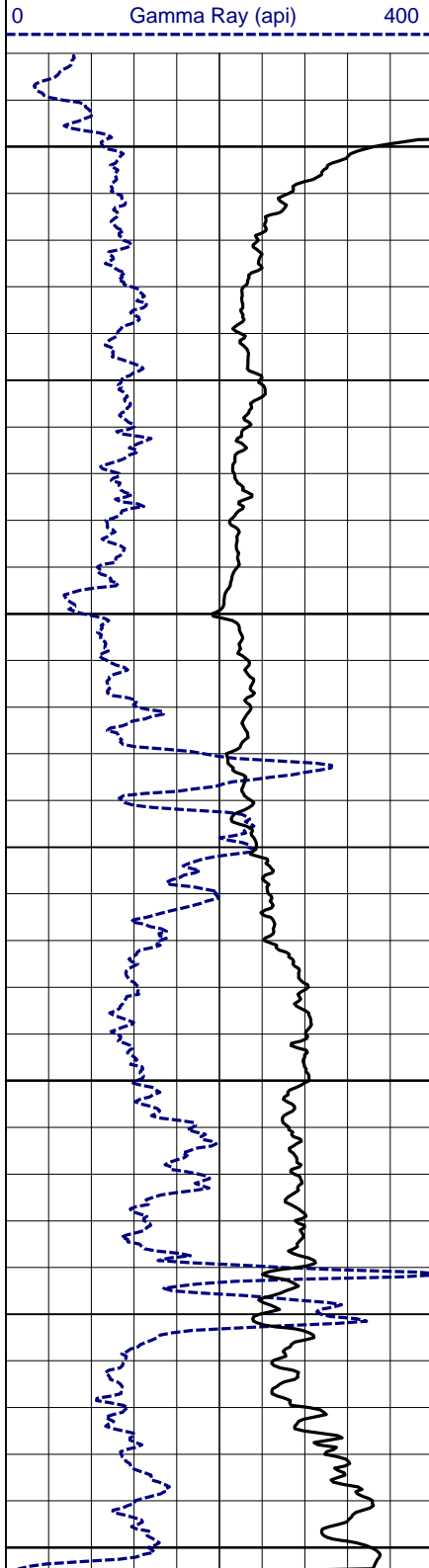
## NOTICE

All interpretations are opinions based on inferences from electrical and other measurements and we do not guarantee the accuracy or correctness of any verbal or written interpretation, and we shall not, except in the case of gross or willful negligence on our part, be liable or responsible for any loss, costs, damages or expenses incurred or sustained by anyone resulting from any interpretation made by one of our officers, agents or employees. These interpretations are also subject to our General Terms and Conditions as set out in our current Price Schedule.  
*welenco, inc. January 13, 2007*

ELECTRIC - GAMMA RAY - TEMPERATURE LOG

DEPTHS  
Single Page

< - S.P. (5 mV/div) + >



0	64 Inch Normal (ohmmeter <sup>2</sup> /m)	200	10	Single Point (ohms)	70
0	16 Inch Normal (ohmmeter <sup>2</sup> /m)	200	63	Temperature (°F)	68

