

UNAVCO

Borehole: Golden Hills 2 B072

GOLDEN HILLS II

top of borehole.....

East: 120.34408
North: 35.83124
Elev: 1358

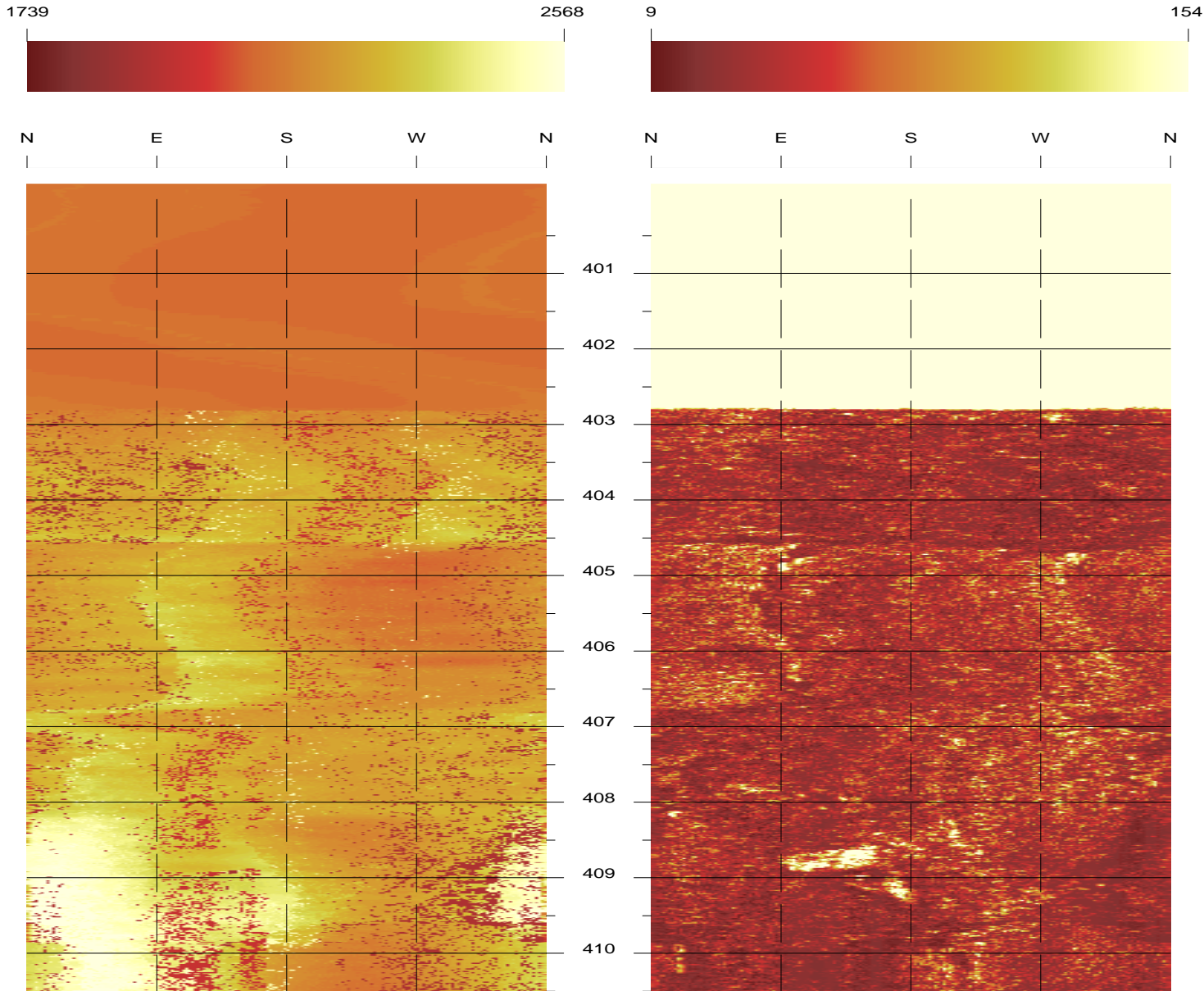
North ref. is magnetic
Depth units are feet
Vertical scale: 1/25

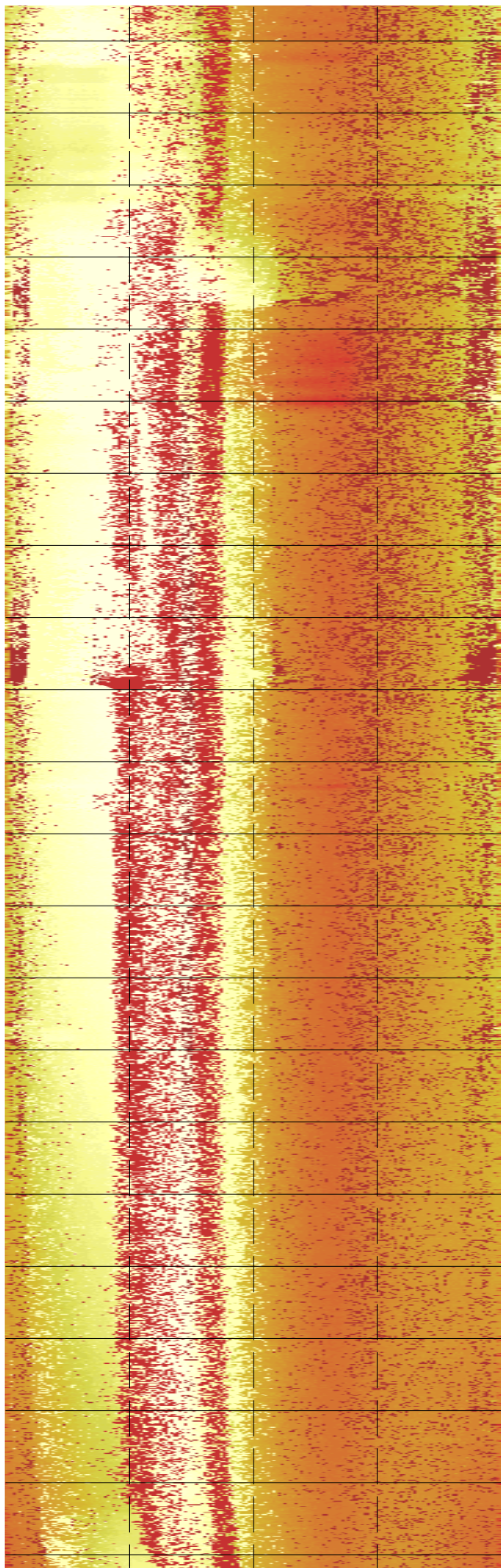
Zone from 543.448 to 400.020ft
Format BHTV-NESWN

Borehole diam: 6.000inch
data intervals.....
azimuth: 2.000deg
depth: 0.008ft

TRAVEL TIME (0.1µsec)

AMPLITUDE





411

412

413

414

415

416

417

418

419

420

421

422

423

424

425

426

427

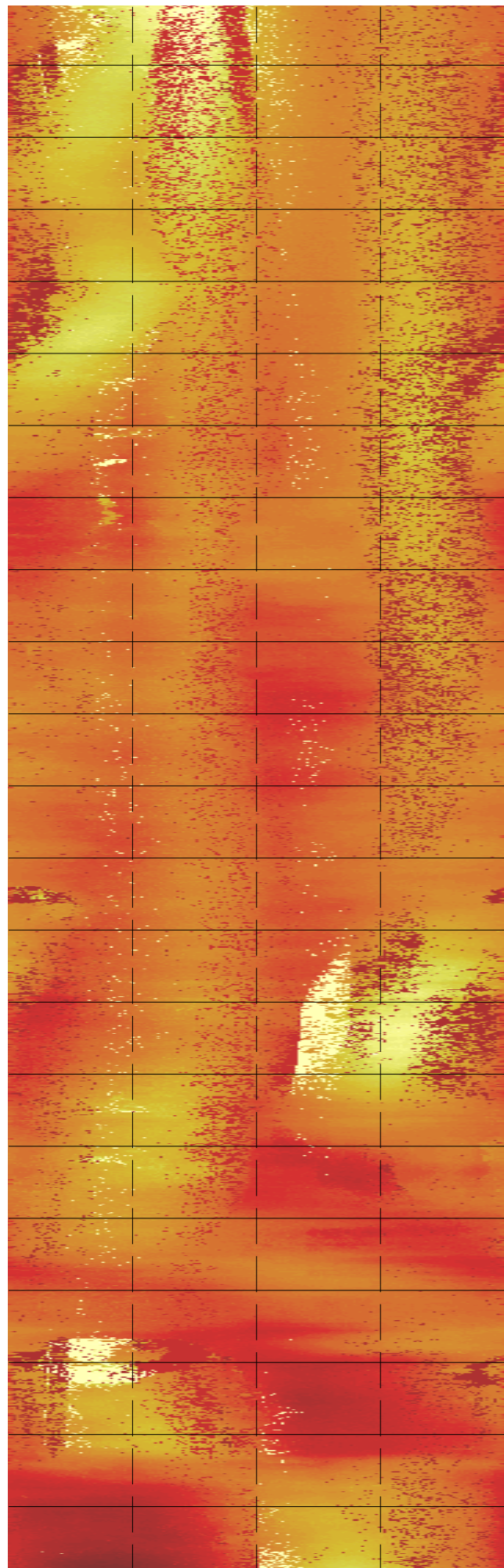
428

429

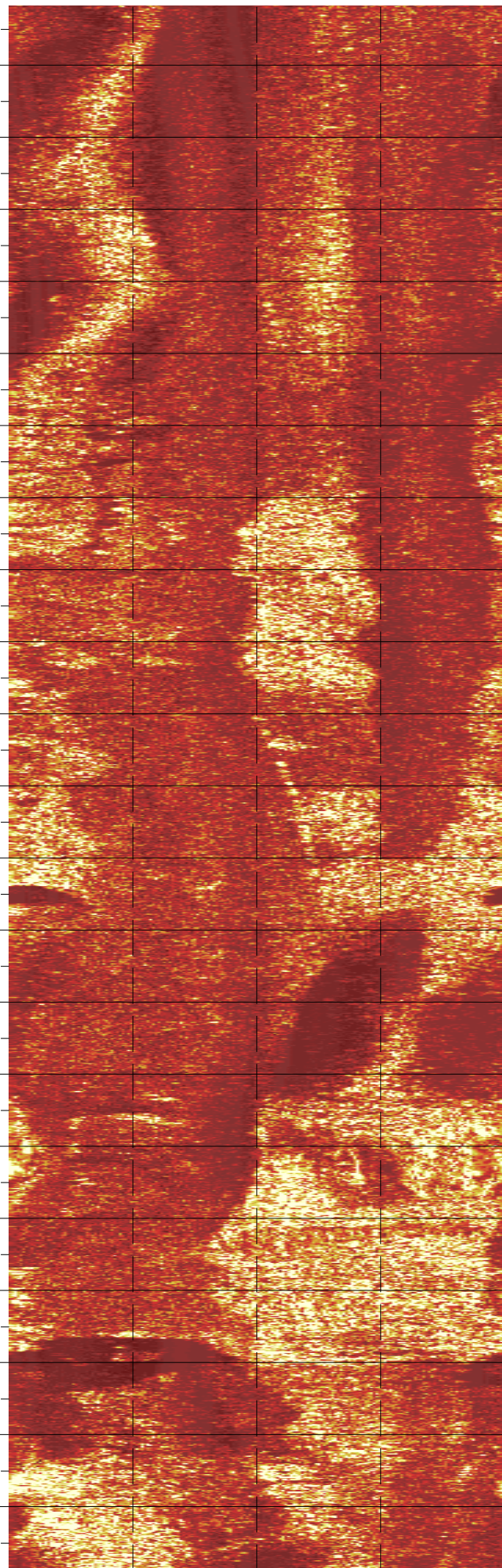
430

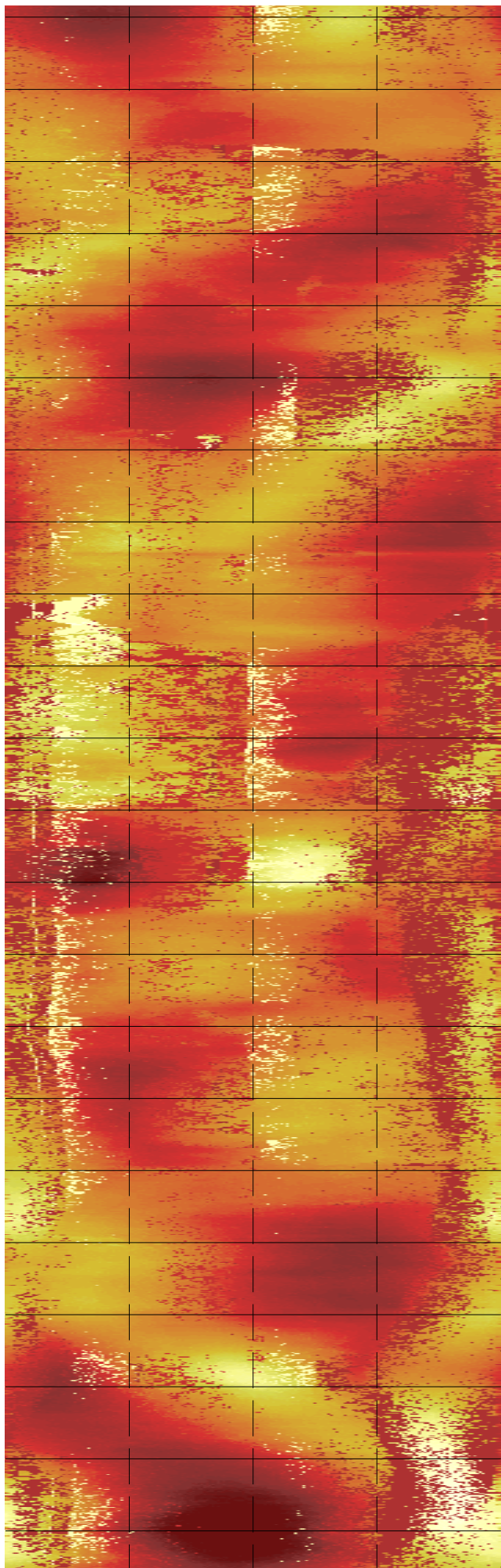
431

432

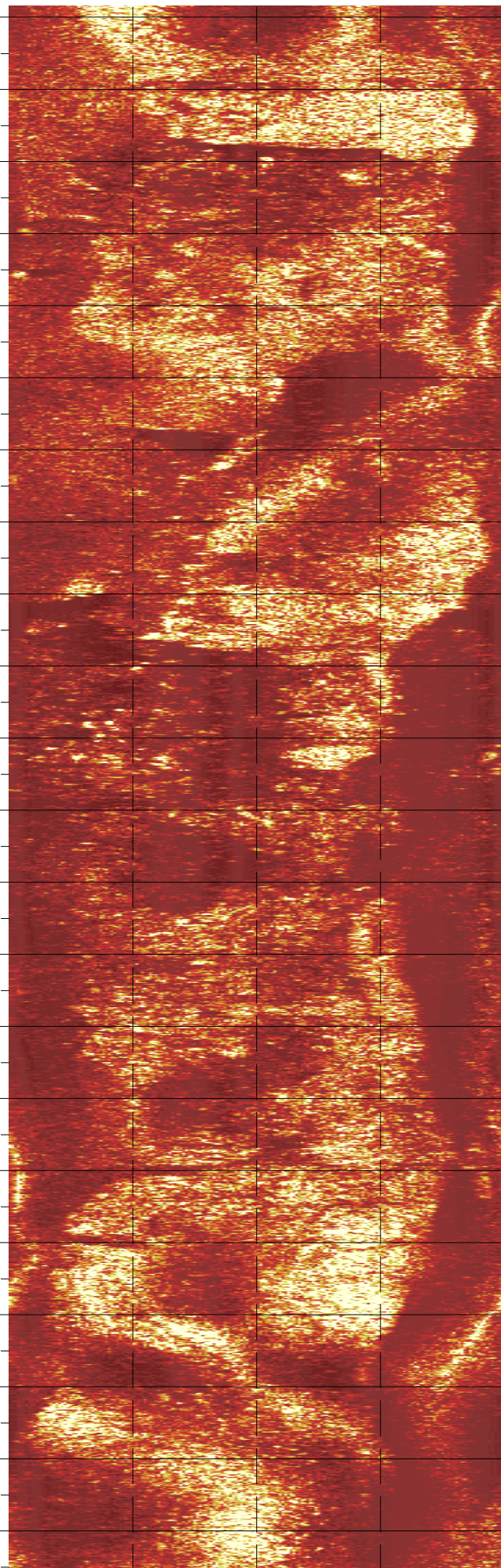


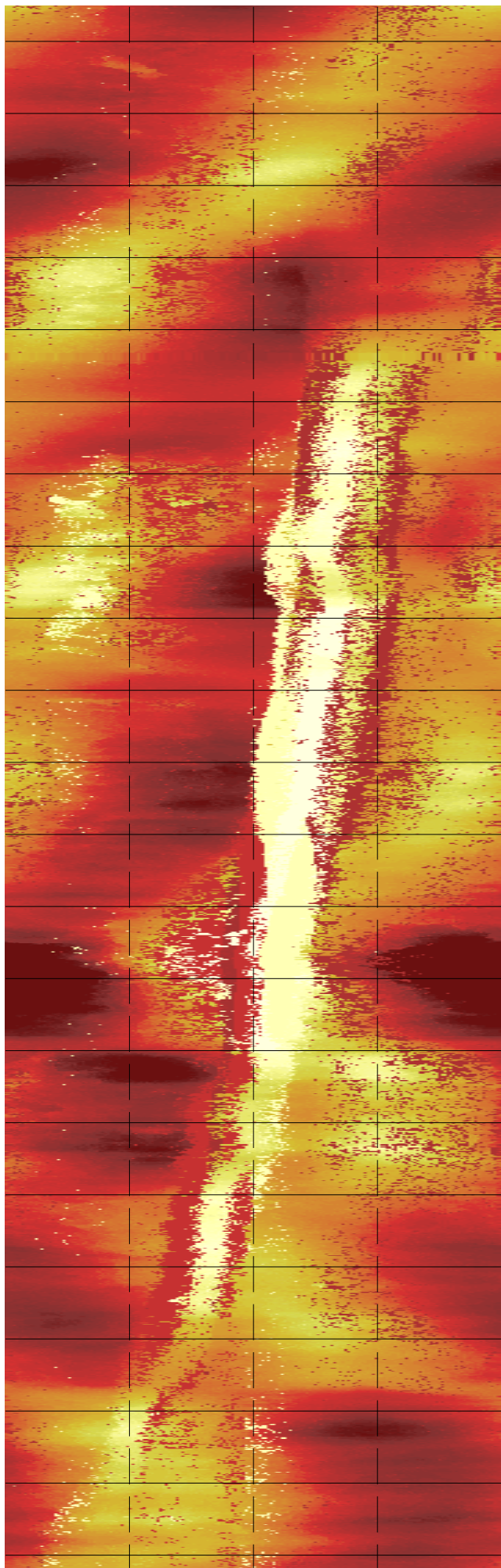
433
434
435
436
437
438
439
440
441
442
443
444
445
446
447
448
449
450
451
452
453





454
455
456
457
458
459
460
461
462
463
464
465
466
467
468
469
470
471
472
473
474
475





476

477

478

479

480

481

482

483

484

485

486

487

488

489

490

491

492

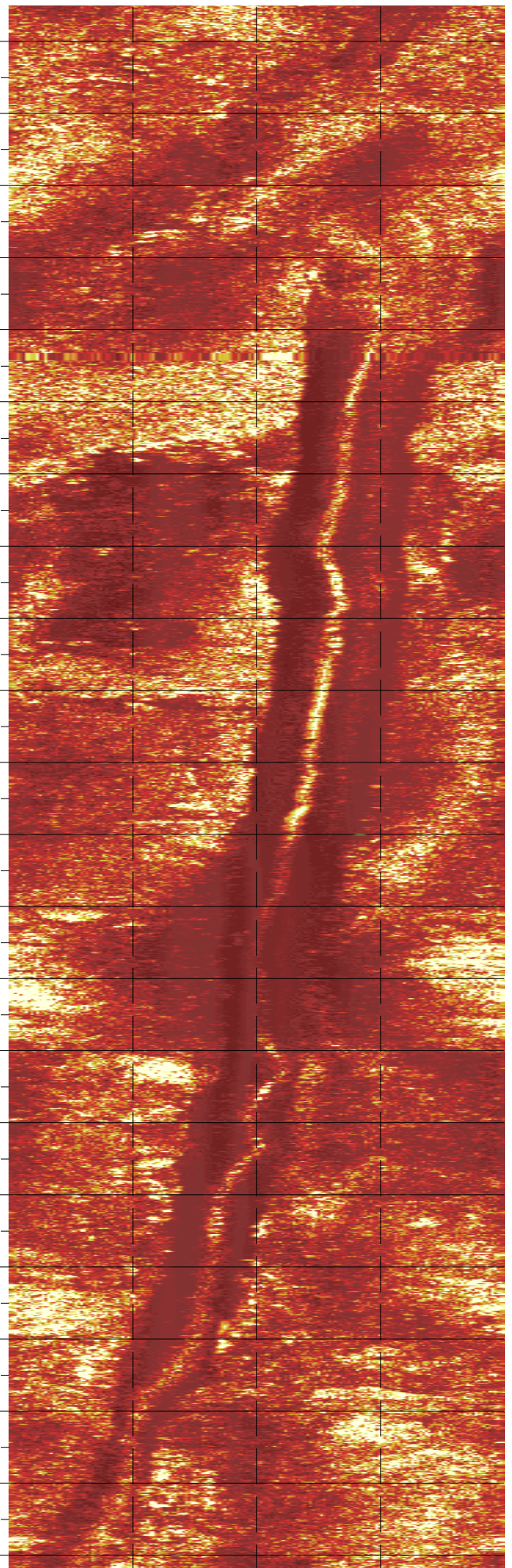
493

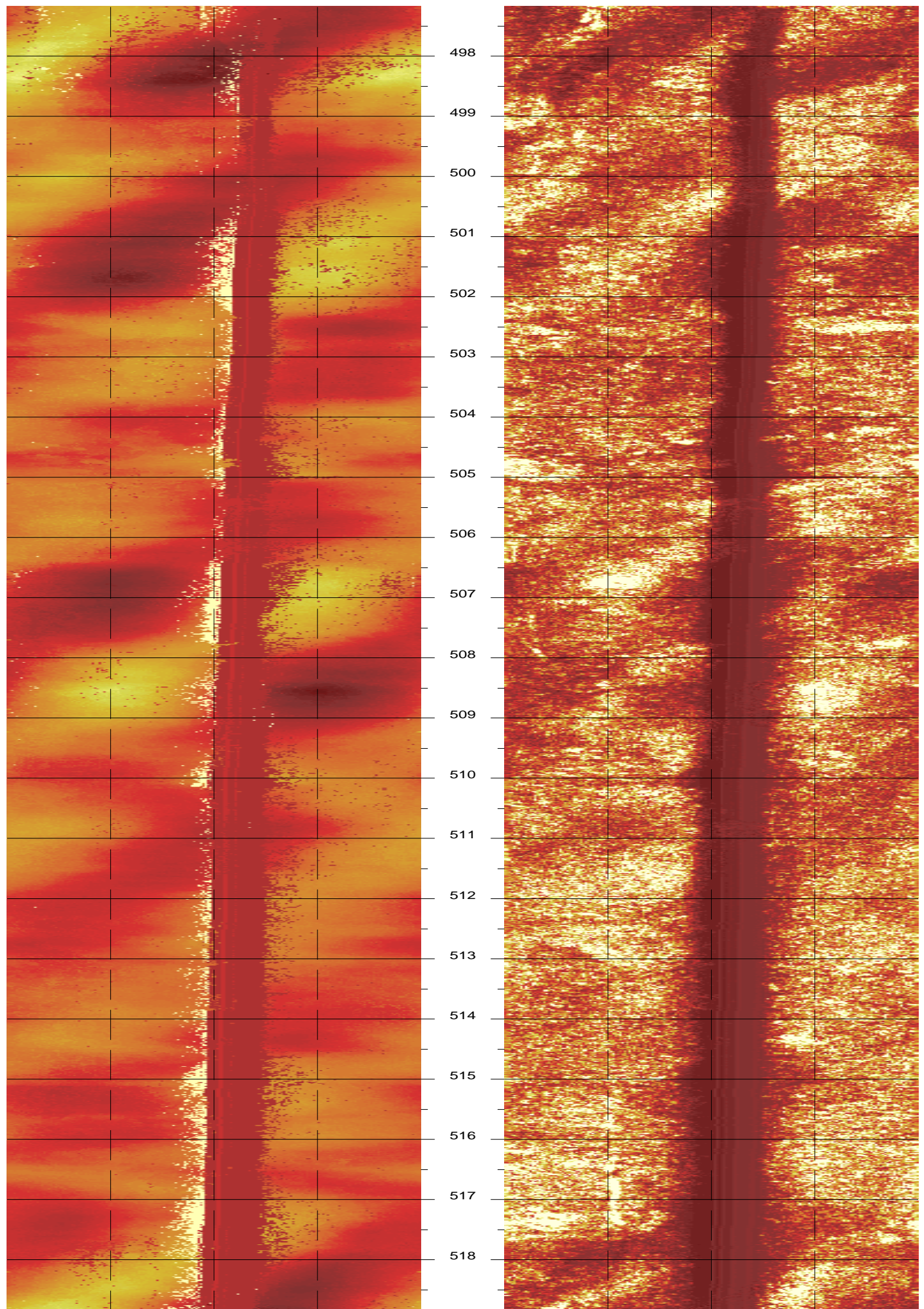
494

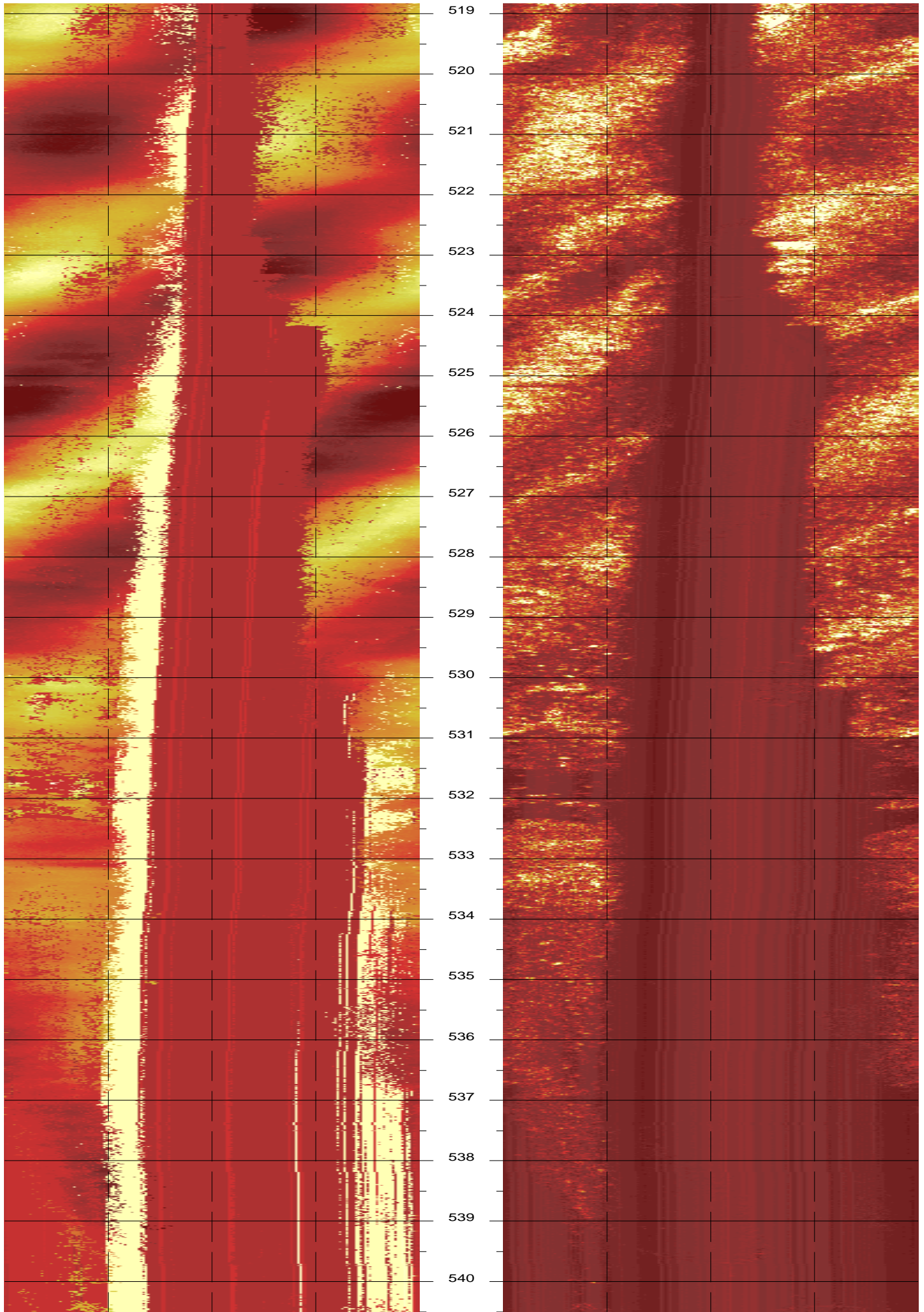
495

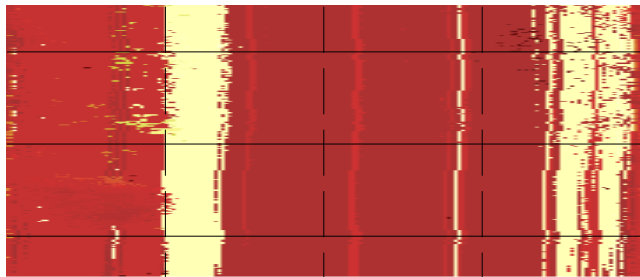
496

497









541

542

543

