

Miscellaneous Information

Remarks:

Latitude, Longitude & Elevation values were determined using a recreational GPS accurate to +/- 45 feet. The Section, Township, and Range then determined using the TRS conversion program (TRS accuracy is not guaranteed). The NOTICE at the bottom of this heading applies.

Elog and Caliper run on 6/7/2006

Perforated Intervals:

Line Speed:

Borehole Volume Calculations:

Other Information:

NOTICE: All interpretations are opinions based on inferences from electrical and other measurements and we do not guarantee the accuracy or correctness of any verbal or written interpretation, and we shall not, except in the case of gross or willful negligence on our part, be liable or responsible for any loss, costs, damages or expenses incurred or sustained by anyone resulting from any interpretation made by one of our officers, agents or employees. These interpretations are also subject to our General Terms and Conditions as set out in our current Price Schedule.

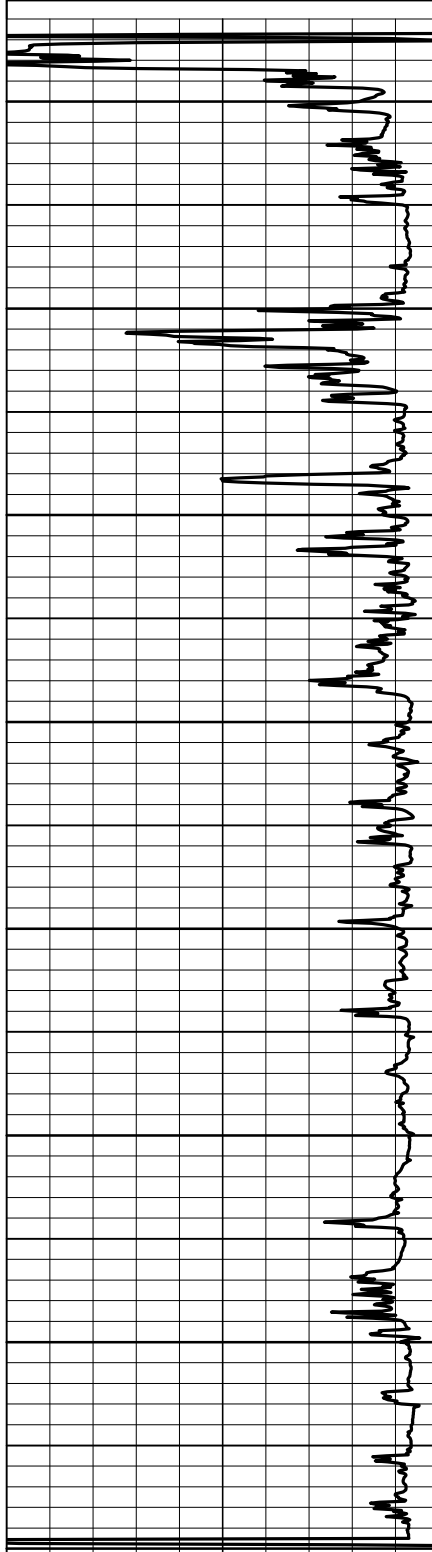
welenco, inc. June 14, 2006

FULL WAVEFORM SONIC - VDL LOG

DEPTHS
Single Page

240 Transit Time (μ Sec/ft) 40

100	Near P Wave (μ secs)	1100	100	Far P Wave (μ secs)	1100
100	Near Variable Density (μ secs)	1100	100	Far Variable Density (μ secs)	1100



60
100
150
200
250
300
350
400
450
500
550
600
650
700
750
800

