



5201 Woodmere Drive, Bakersfield, CA 93313-- www.welenco.com--(800) 445-9914
California Contractor's License No. 722373

FULL WAVEFORM SONIC - VDL LOG - CALIPER

| | | | |
|-------------------------------|---|-------------------------|--|
| FILING NO. | COMPANY <u>UNAVCO</u> | | |
| | WELL <u>B-084</u> | | |
| | FIELD <u>Pinon Flat Observatory</u> | | |
| | STATE <u>California</u> | COUNTY <u>Riverside</u> | |
| | LOCATION: <u>60100 Jeraboa Rd</u> | | OTHER SERVICES: <u>ELOG Televiwer</u> |
| JOB NO. 6001 | SEC: <u>34</u> TWP: <u>6S</u> RGE: <u>5E</u> LAT.: <u>33° 36' 41.4"</u> LONG.: <u>116° 27' 21.6"</u> MERIDIAN.: <u>San Bernardino</u> | | |

Permanent Datum: Ground Level, Elev. 4205 Ft. Elev.: K.B. _____ Ft.
 Log Measured From: Ground Level, 0 Ft. Above Perm. Datum D.F. _____ Ft.
 Drilling Measured From: Ground Level G.L. 4205 Ft.

| | | | | | | | |
|----------------------|----------------------|-------------|--|----|--|----|----|
| Date | <u>May. 08, 2006</u> | | | | | | |
| Type Of Log | <u>Sonic</u> | | | | | | |
| Run No. | <u>One</u> | | | | | | |
| Depth-Driller | <u>698</u> | Ft | | Ft | | Ft | Ft |
| Depth-Logger | <u>695</u> | Ft | | Ft | | Ft | Ft |
| Top Logged Interval | <u>180</u> | Ft | | Ft | | Ft | Ft |
| Btm. Logged Interval | <u>694</u> | Ft | | Ft | | Ft | Ft |
| Type Fluid In Hole | <u>Water</u> | | | | | | |
| Fluid Level | <u>N/A</u> | Ft | | Ft | | Ft | Ft |
| Max Temp | <u>76.8</u> | °F | | °F | | °F | °F |
| Operating Rig Time | <u>N/A</u> | Hr | | Hr | | Hr | Hr |
| Van No. | <u>LV-1</u> | <u>Bfld</u> | | | | | |
| Recorded By | <u>Dan Ihde</u> | | | | | | |
| Witnessed By | <u>Sarah Venator</u> | | | | | | |

| RUN NO. | BOREHOLE RECORD | | | | CASING RECORD | | | |
|----------|-----------------|---------------|---------------|----------------|---------------|-------------|---------------|--|
| | BIT | FROM | TO | SIZE | TYPE | FROM | TO | |
| 1 | 5.75 In | 194 Ft | 698 Ft | 5.75 In | Steel | 0 Ft | 194 Ft | |
| 2 | In | Ft | Ft | In | | Ft | Ft | |
| 3 | In | Ft | Ft | In | | Ft | Ft | |

Miscellaneous Information

Remarks:

Latitude, Longitude & Elevation values were determined using a recreational GPS accurate to +/- 45 feet. The Section, Township, and Range then determined using the TRS conversion program (TRS accuracy is not guaranteed). The NOTICE at the bottom of this heading applies.

Perforated Intervals:

| | | |
|--|--|--|
| | | |
| | | |
| | | |
| | | |
| | | |

Line Speed:

| | |
|--|--|
| | |
| | |
| | |
| | |
| | |
| | |

Borehole Volume Calculations:

| | |
|--|--|
| | |
| | |
| | |
| | |
| | |
| | |
| | |

Other Information:

| | |
|--|--|
| | |
| | |
| | |

NOTICE: All interpretations are opinions based on inferences from electrical and other measurements and we do not guarantee the accuracy or correctness of any verbal or written interpretation, and we shall not, except in the case of gross or willful negligence on our part, be liable or responsible for any loss, costs, damages or expenses incurred or sustained by anyone resulting from any interpretation made by one of our officers, agents or employees. These interpretations are also subject to our General Terms and Conditions as set out in our current Price Schedule.

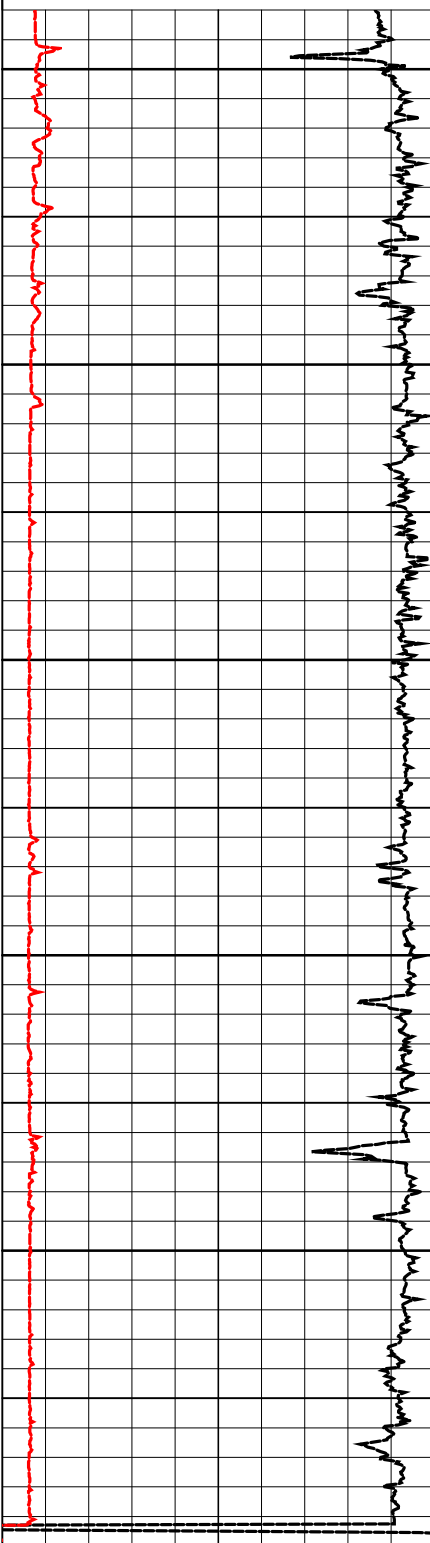
welenco, inc. May 08, 2006

DEPTHS
Single Page

FULL WAVEFORM SONIC - VDL LOG - CALIPER

5 3-Arm Caliper (inches) 15
240 Transit Time (µSec/ft) 40

100 Near P Wave (µsecs) 1100 100 Far P Wave (µsecs) 1100
100 Near Variable Density (µsecs) 1100 100 Far Variable Density (µsecs) 1100



200
250
300
350
400
450
500
550
600
650
700

