



5201 Woodmere Drive, Bakersfield, CA 93313-- www.welenco.com--(800) 445-9914
California Contractor's License No. 722373

ELECTRIC - GAMMA RAY - TEMPERATURE LOG

FILING NO.	COMPANY	UNAVCO		
	WELL	B-087		
	FIELD	Ford Ranch		
	STATE	California	COUNTY	Riverside
JOB NO. 6001	LOCATION:	Coyote Canyon Road, Anza		OTHER SERVICES: Caliper Sonic Televiwer
	SEC:	7	TWP:	8S
	RGE:	4E	LAT.:	33° 29' 43.8"
	LONG.:	116° 36' 9.6"	MERIDIAN.:	San Bernardino

Permanent Datum: **Ground Level**, Elev. **3830** Ft. Elev.: K.B. _____ Ft.
 Log Measured From: **Ground Level**, **0** Ft. Above Perm. Datum D.F. _____ Ft.
 Drilling Measured From: **Ground Level** G.L. **3830** Ft.

Run No.	One			
Date	May. 08, 2006			
Depth-Driller	720	Ft	Ft	Ft
Depth-Logger	712	Ft	Ft	Ft
Top Logged Interval	210	Ft	Ft	Ft
Btm. Logged Interval	711	Ft	Ft	Ft
Casing-Driller	6	In @ 228	Ft	In @ Ft In @ Ft In @ Ft
Casing-Logger	6	In @ 228	Ft	In @ Ft In @ Ft In @ Ft
Bit Size	6	In	In	In
Time On Bottom	10:40 AM			
Type Fluid In Hole	Water			
Density	Viscosity			
pH	Fluid Loss	ml	ml	ml
Source of Sample	N/A			
Rm @ Measured Temp.	N/A	@ °F	@ °F	@ °F
Rmf @ Measured Temp.	N/A	@ °F	@ °F	@ °F
Rmc @ Measured Temp.		@ °F	@ °F	@ °F
Source Rmf	Rmc	N/A		
Rm @ BHT		@ °F	@ °F	@ °F
Time Since Circulation	N/A	Hr	Hr	Hr
Max. Rec. Temp.	77.8	°F	°F	°F
Van No.	Location	LV-1	Bfld	
Recorded By	Dan Ihde			
Witnessed By	Sarah Venator			

Miscellaneous Information

Latitude, Longitude & Elevation values were determined using a recreational GPS accurate to +/- 45 feet. The Section, Township, and Range then determined using the TRS conversion program (TRS accuracy is not guaranteed). The NOTICE at the bottom of this heading applies.

Water level reported at 48 feet.

NOTICE

All interpretations are opinions based on inferences from electrical and other measurements and we do not guarantee the accuracy or correctness of any verbal or written interpretation, and we shall not, except in the case of gross or willful negligence on our part, be liable or responsible for any loss, costs, damages or expenses incurred or sustained by anyone resulting from any interpretation made by one of our officers, agents or employees. These interpretations are also subject to our General Terms and Conditions as set out in our current Price Schedule.

welenco, inc. May 08, 2006

ELECTRIC - GAMMA RAY - TEMPERATURE LOG

DEPTHS

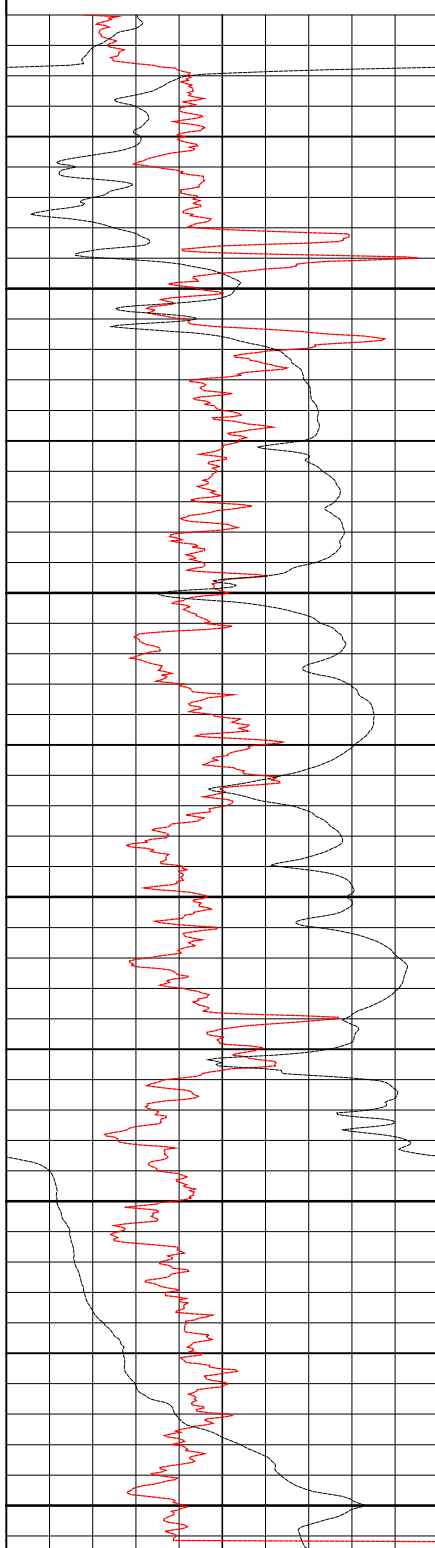
Single Page

< - S.P. (20 mV/div) + >

0 Gamma Ray (api) 350

0 64 Inch Normal (ohmmeter²/m) 4000 | 0 Single Point (ohms) 1200

0 16 Inch Normal (ohmmeter²/m) 4000 | 70 Temperature (°F) 80



250
300
350
400
450
500
550
600
650
700

