



5201 Woodmere Drive, Bakersfield, CA 93313-- www.welenco.com--(800) 445-9914  
California Contractor's License No. 722373

## ELECTRIC - GAMMA RAY - TEMPERATURE LOG

FILING NO.	COMPANY <u>UNAVCO</u>		
	WELL <u>B902</u>		
	FIELD <u>Ortega Springs</u>		
	STATE <u>California</u>	COUNTY <u>Kern</u>	
	LOCATION: <u>Approx. 6 Miles South of Hwy. 46 &amp; Hwt. 41 Intersection</u>		OTHER SERVICES: <u>Acoustical Televue Caliper Sonic</u>
JOB NO. <b>5630</b>	SEC: <u>7</u> TWP: <u>26S</u> RGE: <u>17E</u> LAT.: <u>35° 41' 3.0"</u> LONG.: <u>120° 11' 34.0"</u> MERIDIAN.: <u>Mt. Diablo</u>		

Permanent Datum: Top of Casing, Elev. 1358 Ft. Elev.: K.B. \_\_\_\_\_ Ft.  
 Log Measured From: Top of Casing, 0 Ft. Above Perm. Datum D.F. \_\_\_\_\_ Ft.  
 Drilling Measured From: Ground Level G.L. 1358 Ft.

Run	<u>One</u>						
Date	<u>Aug. 28, 2007</u>						
Depth-Driller	<u>798</u>	Ft		Ft		Ft	Ft
Depth-Logger	<u>797</u>	Ft		Ft		Ft	Ft
Top Logged Interval	<u>580</u>	Ft		Ft		Ft	Ft
Btm. Logged Interval	<u>796</u>	Ft		Ft		Ft	Ft
Casing-Driller	<u>6.25</u>	In @ <u>600</u>	Ft	In @	Ft	In @	Ft
Casing-Logger	<u>6.25</u>	In @ <u>596</u>	Ft	In @	Ft	In @	Ft
Bit Size	<u>6.125</u>	In		In		In	In
Time On Bottom							
Type Fluid In Hole	<u>Water</u>						
Density	Viscosity						
pH	Fluid Loss		ml	ml		ml	ml
Source of Sample							
Rm @ Measured Temp.	<u>N/A</u>	@ <u>75</u>	°F	@	°F	@	°F
Rmf @ Measured Temp.	<u>N/A</u>	@ <u>75</u>	°F	@	°F	@	°F
Rmc @ Measured Temp.		@	°F	@	°F	@	°F
Source Rmf	Rmc						
Rm @ BHT		@	°F	@	°F	@	°F
Time Since Circulation	<u>N/A</u>		Hr		Hr		Hr
Max. Rec. Temp.	<u>75.7</u>		°F		°F		°F
Van No.	Location	<u>L-18</u>	<u>Svg</u>				
Recorded By	<u>Mitch Tullis</u>						
Witnessed By	<u>Sarah Venator</u>						

## Miscellaneous Information

A recreational GPS accurate to +/- 45 feet set for Datum NAD27 was used to calculate Latitude, Longitude & Elevation values. The Section, Township, and Range then determined using the TRS program (TRS accuracy is not guaranteed). The TRS program converts Latitude and Longitude to Section, Township, and Range. The NOTICE at the bottom of this heading also applies.

Drilled By: WDC

### NOTICE

All interpretations are opinions based on inferences from electrical and other measurements and we do not guarantee the accuracy or correctness of any verbal or written interpretation, and we shall not, except in the case of gross or willful negligence on our part, be liable or responsible for any loss, costs, damages or expenses incurred or sustained by anyone resulting from any interpretation made by one of our officers, agents or employees. These interpretations are also subject to our General Terms and Conditions as set out in our current Price Schedule.  
*welenco, inc. August 29, 2007*

ELECTRIC - GAMMA RAY - TEMPERATURE LOG

DEPTHS

5 in/100ft

< - S.P. (20 mV/div) + >

0 64 Inch Normal (ohmmeter<sup>2</sup>/m) x10 1000

0 64 Inch Normal (ohmmeter<sup>2</sup>/m) 100

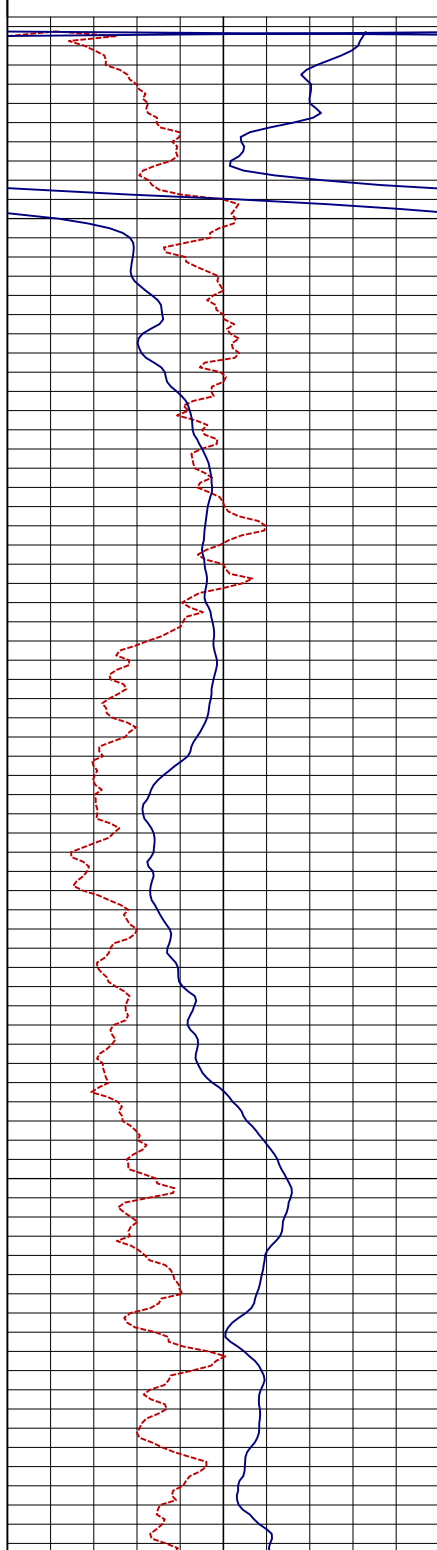
0 16 Inch Normal (ohmmeter<sup>2</sup>/m) x10 1000

0 Single Point (ohms) 35

0 16 Inch Normal (ohmmeter<sup>2</sup>/m) 100

73 Temperature (°F) 78

0 Gamma Ray (api) 200

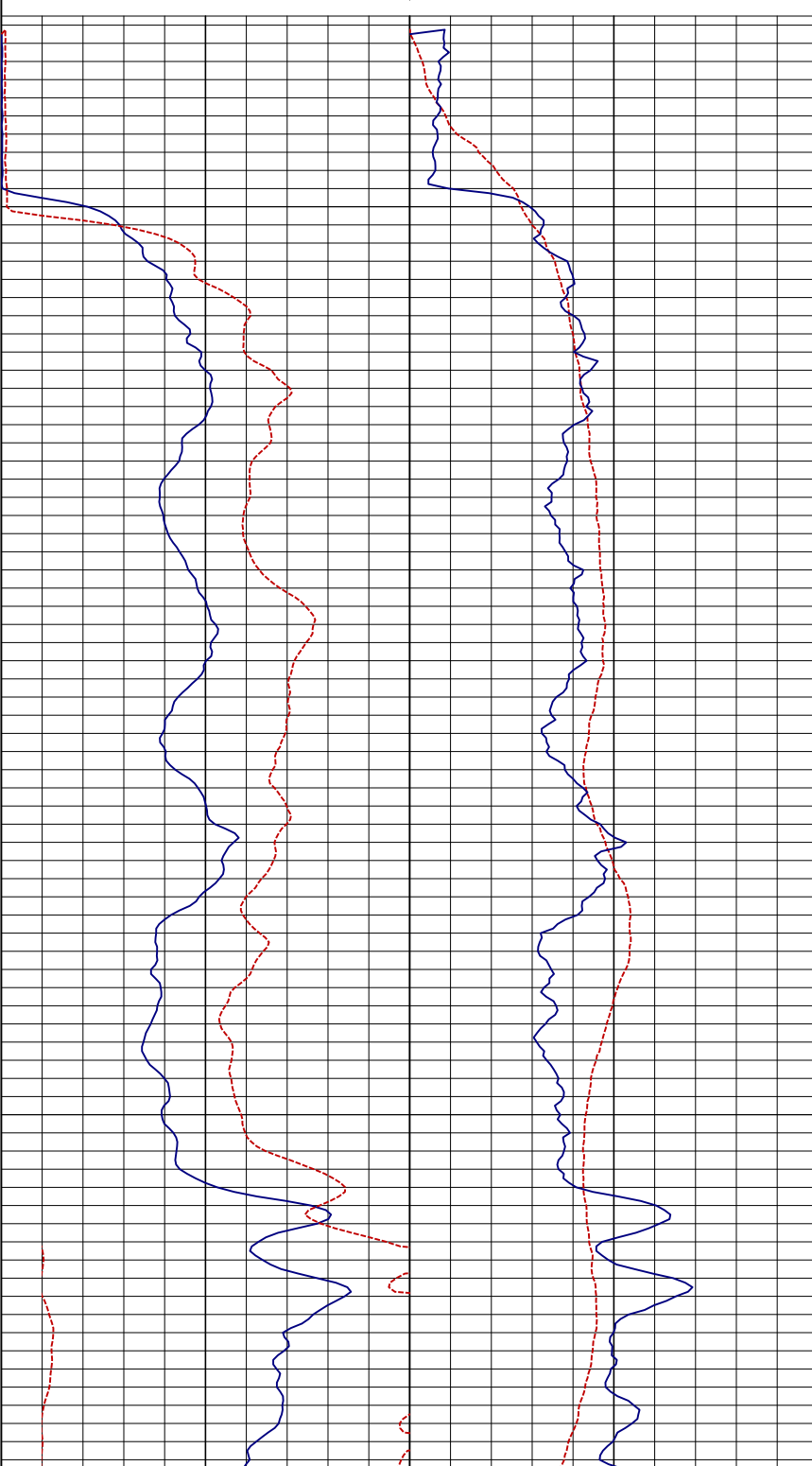


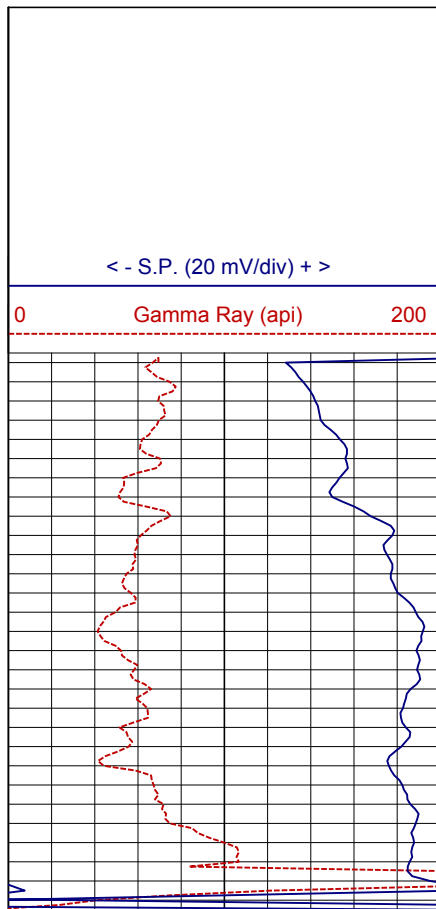
579

600

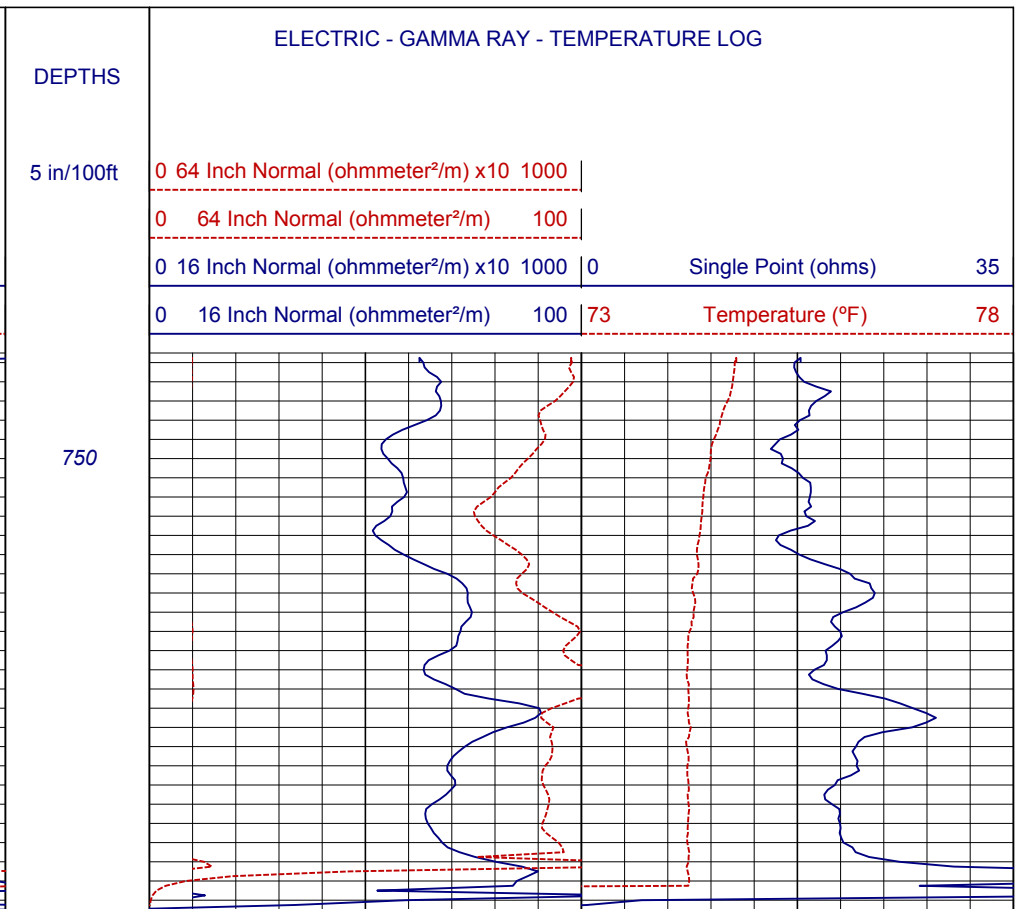
650

700





Log Page No. 2 of 2 Pages



Page Length: 739 - 797 Feet (58 Feet)

Time: 10:27:09 AM

Date: Aug 29, 2007