



5201 Woodmere Drive, Bakersfield, CA 93313-- www.welenco.com--(800) 445-9914
California Contractor's License No. 722373

FULL WAVEFORM SONIC - VDL LOG

FILING NO.	COMPANY <u>UNAVCO</u>		
	WELL <u>China Lake NWC B-917</u>		
	FIELD <u>China Lake</u>		
	STATE <u>California</u>	COUNTY <u>San Bernardino</u>	
	LOCATION:		OTHER SERVICES: EL-GR HIRAT CALIPER
JOB NO. 8737	SEC: <u>15</u> TWP: <u>29S</u> RGE: <u>44E</u> LAT.: <u>35° 24' 19.5"</u> LONG.: <u>117° 15' 28.3"</u> MERIDIAN.: <u>Mt. Diablo</u>		

Permanent Datum: Top of Casing, Elev. 3900 Ft. Elev.: K.B. _____ Ft.
 Log Measured From: Top of Casing, 0 Ft. Above Perm. Datum D.F. _____ Ft.
 Drilling Measured From: Ground Level G.L. 3900 Ft.

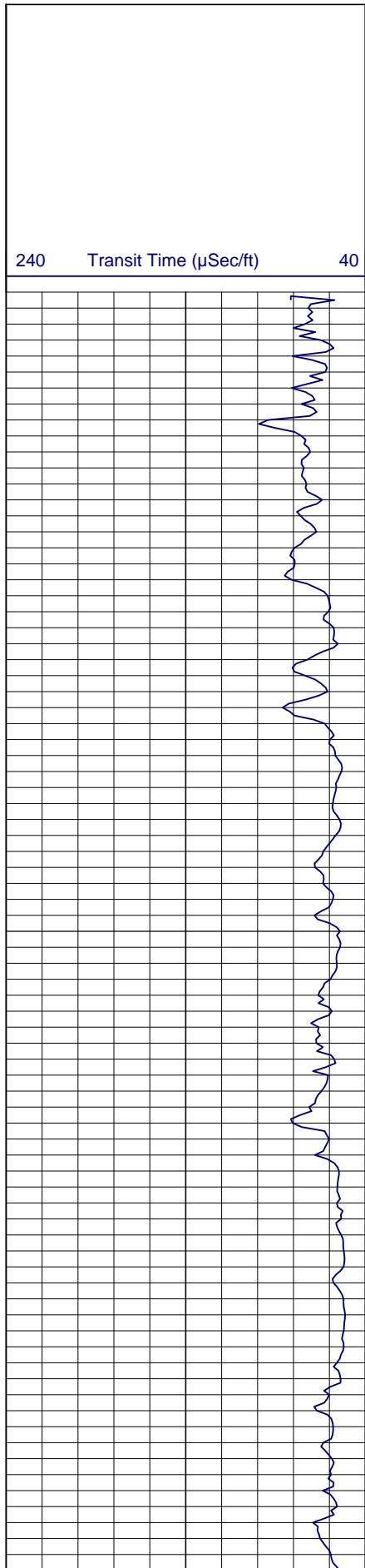
Run	One						
Date	Jun. 24, 2008						
Depth-Driller	610	Ft		Ft		Ft	Ft
Depth-Logger	607	Ft		Ft		Ft	Ft
Top Logged Interval	400	Ft		Ft		Ft	Ft
Btm. Logged Interval	607	Ft		Ft		Ft	Ft
Casing-Driller	6	In @ 410	Ft	In @	Ft	In @	Ft
Casing-Logger	6	In @ 415	Ft	In @	Ft	In @	Ft
Bit Size	6	In		In		In	In
Time On Bottom							
Type Fluid In Hole	Water						
Density	Viscosity						
pH	Fluid Loss						
			ml		ml		ml
Source of Sample	N/A						
Rm @ Measured Temp.	N/A	@	°F	@	°F	@	°F
Rmf @ Measured Temp.	N/A	@	°F	@	°F	@	°F
Rmc @ Measured Temp.		@	°F	@	°F	@	°F
Source Rmf	Rmc						
Rm @ BHT		@	°F	@	°F	@	°F
Time Since Circulation			Hr		Hr		Hr
Max. Rec. Temp.			°F		°F		°F
Van No.	Location	L-18	SVG				
Recorded By	Mitch Tullis						
Witnessed By							

Miscellaneous Information

A recreational GPS accurate to +/- 45 feet set for Datum NAD27 was used to calculate Latitude, Longitude & Elevation values. The Section, Township, and Range then determined using the TRS program (TRS accuracy is not guaranteed). The TRS program converts Latitude and Longitude to Section, Township, and Range. The NOTICE at the bottom of this heading also applies.

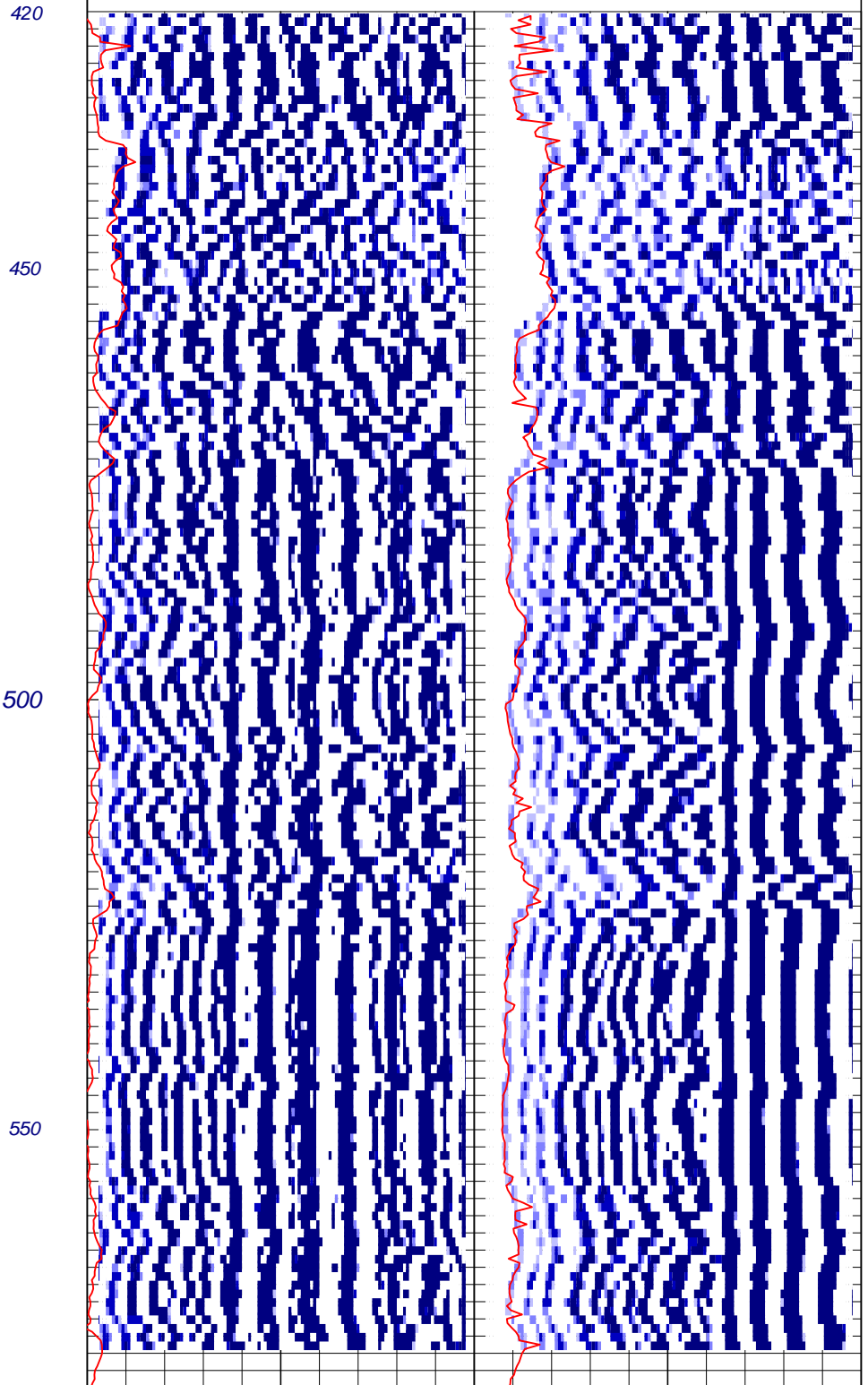
NOTICE

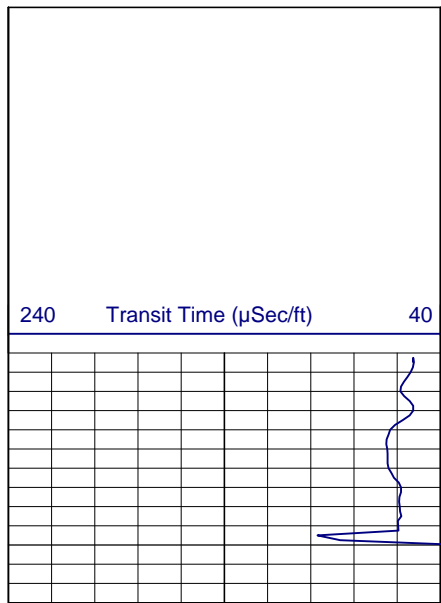
All interpretations are opinions based on inferences from electrical and other measurements and we do not guarantee the accuracy or correctness of any verbal or written interpretation, and we shall not, except in the case of gross or willful negligence on our part, be liable or responsible for any loss, costs, damages or expenses incurred or sustained by anyone resulting from any interpretation made by one of our officers, agents or employees. These interpretations are also subject to our General Terms and Conditions as set out in our current Price Schedule.
welenco, inc. June 24, 2008



FULL WAVEFORM SONIC - VDL LOG

200	Near P Wave (µsecs)	1200	200	Far P Wave (µsecs)	1200
200	Near Variable Density (µsecs)	1200	200	Far Variable Density (µsecs)	1200





Log Page No. 2 of 2 Pages

DEPTHS

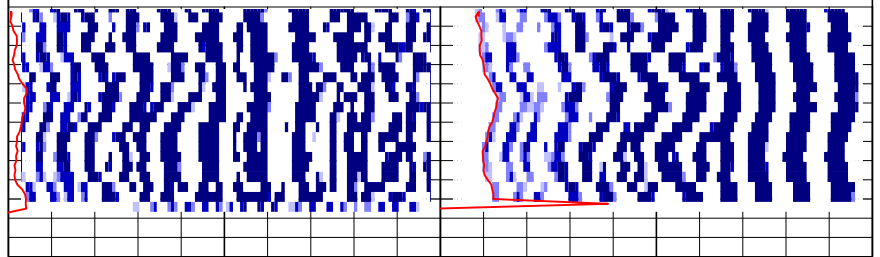
5 in/100ft

FULL WAVEFORM SONIC - VDL LOG

200 Near P Wave (µsecs) 1200 200 Far P Wave (µsecs) 1200

200 Near Variable Density (µsecs) 1200 200 Far Variable Density (µsecs) 1200

600



Page Length: 580 - 606 Feet (26 Feet)

Time: 02:00:50 PM

Date: Jun 24, 2008