



5201 Woodmere Drive, Bakersfield, CA 93313-- www.welenco.com--(800) 445-9914
California Contractor's License No. 722373

ELECTRIC - GAMMA RAY - 3ARM CAL LOG

FILING NO.	COMPANY <u>UNAVCO</u>		
	WELL <u>China Lake NWC B-917</u>		
	FIELD <u>Ridgecrest</u>		
	STATE <u>California</u>	COUNTY <u>San Bernardino</u>	
	LOCATION: <u>China Lake NWC South Range</u>		OTHER SERVICES: <u>HIRAT SONIC</u>
JOB NO. 8740	SEC: <u>15</u> TWP: <u>29S</u> RGE: <u>44E</u> LAT.: <u>35° 24' 19.5"</u> LONG.: <u>117° 15' 28.3"</u> MERIDIAN.: <u>Mt. Diablo</u>		

Permanent Datum: Top of Casing, Elev. 3900 Ft. Elev.: K.B. _____ Ft.
 Log Measured From: Top of Casing, 0 Ft. Above Perm. Datum D.F. _____ Ft.
 Drilling Measured From: Ground Level G.L. 3900 Ft.

Run	One						
Date	Jun. 26, 2008						
Depth-Driller	800	Ft		Ft		Ft	Ft
Depth-Logger	795	Ft		Ft		Ft	Ft
Top Logged Interval	400	Ft		Ft		Ft	Ft
Btm. Logged Interval	795	Ft		Ft		Ft	Ft
Casing-Driller	6	In @ 410	Ft	In @	Ft	In @	Ft
Casing-Logger	6	In @ 410	Ft	In @	Ft	In @	Ft
Bit Size	6	In		In		In	In
Time On Bottom	0845						
Type Fluid In Hole	Water						
Density	Viscosity						
pH	Fluid Loss						
			ml		ml		ml
Source of Sample	PIT						
Rm @ Measured Temp.	10.4	@ 75	°F	@	°F	@	°F
Rmf @ Measured Temp.	8.3	@ 75	°F	@	°F	@	°F
Rmc @ Measured Temp.		@	°F	@	°F	@	°F
Source Rmf	meas.						
Rm @ BHT		@	°F	@	°F	@	°F
Time Since Circulation			Hr		Hr		Hr
Max. Rec. Temp.			°F		°F		°F
Van No.	L-18	Location	SVG				
Recorded By	Mitch Tullis						
Witnessed By	Steve						

Miscellaneous Information

A recreational GPS accurate to +/- 45 feet set for Datum NAD27 was used to calculate Latitude, Longitude & Elevation values. The Section, Township, and Range then determined using the TRS program (TRS accuracy is not guaranteed). The TRS program converts Latitude and Longitude to Section, Township, and Range. The NOTICE at the bottom of this heading also applies.

Drilled By: Steves Pump & Well Drilling

NOTICE

All interpretations are opinions based on inferences from electrical and other measurements and we do not guarantee the accuracy or correctness of any verbal or written interpretation, and we shall not, except in the case of gross or willful negligence on our part, be liable or responsible for any loss, costs, damages or expenses incurred or sustained by anyone resulting from any interpretation made by one of our officers, agents or employees. These interpretations are also subject to our General Terms and Conditions as set out in our current Price Schedule.
welenco, inc. June 26, 2008

ELECTRIC - GAMMA RAY - 3ARM CAL LOG

DEPTHS

5 in/100ft

< - S.P. (10 mV/div) + >

0 64 Inch Normal (ohmmeter²/m) x10 5000

0 64 Inch Normal (ohmmeter²/m) 500

0 16 Inch Normal (ohmmeter²/m) x10 5000

2 3-Arm Caliper (inches)

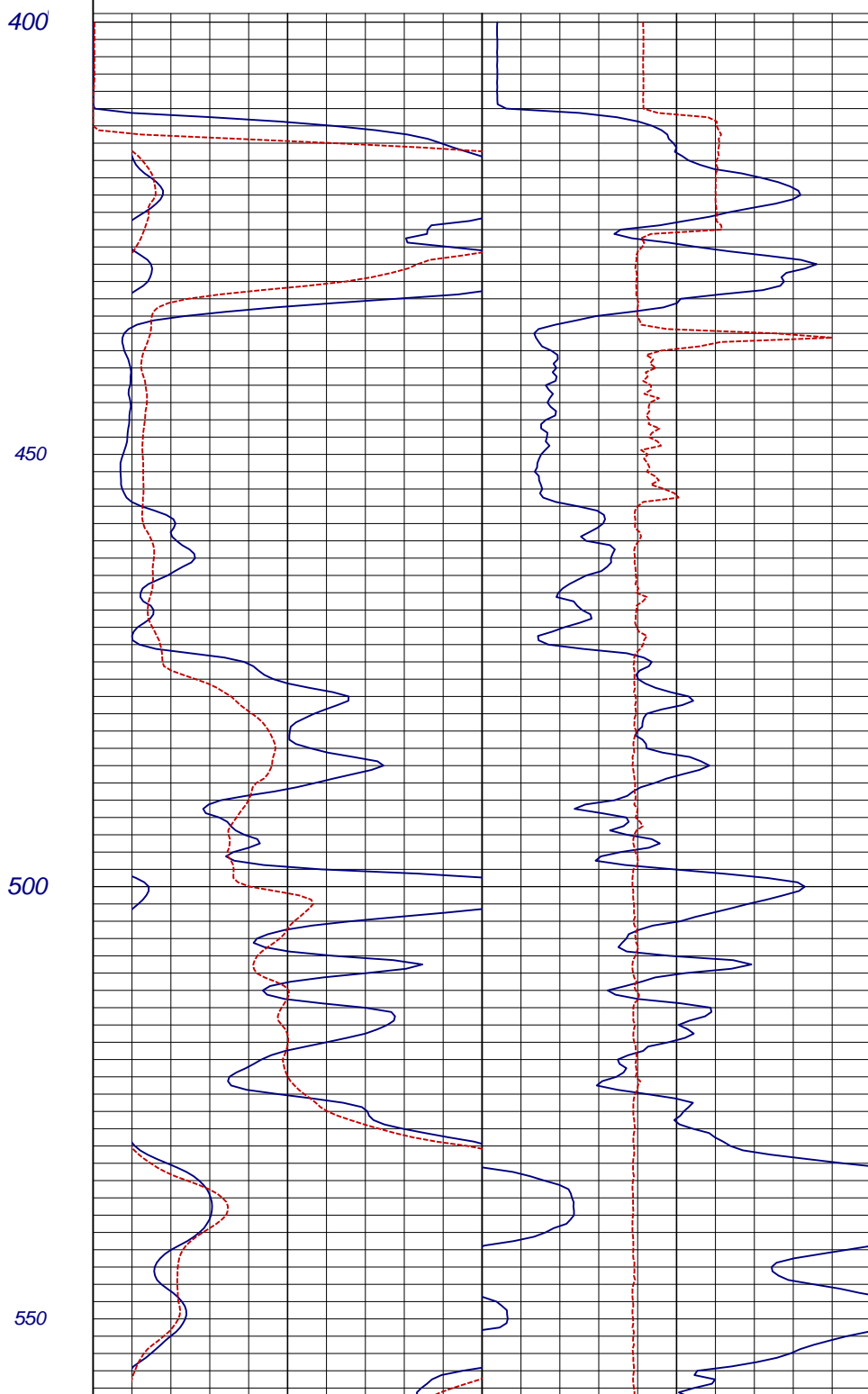
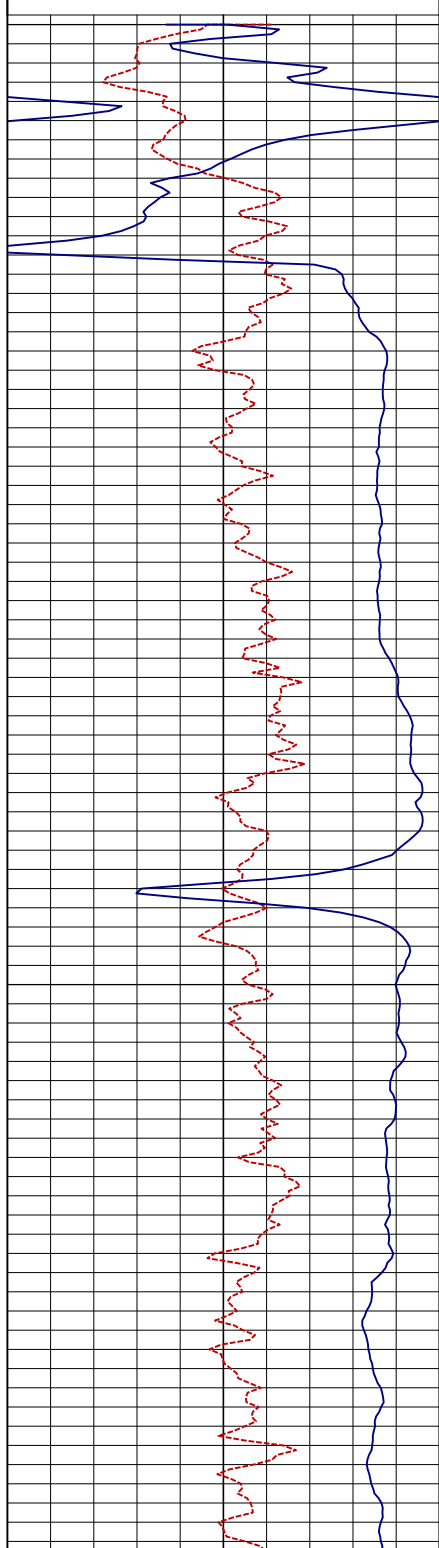
12

0 16 Inch Normal (ohmmeter²/m) 500

0 Single Point (ohms)

300

0 Gamma Ray (api) 200



ELECTRIC - GAMMA RAY - 3ARM CAL LOG

DEPTHS

5 in/100ft

< - S.P. (10 mV/div) + >

0 64 Inch Normal (ohmmeter²/m) x10 5000

0 64 Inch Normal (ohmmeter²/m) 500

0 16 Inch Normal (ohmmeter²/m) x10 5000

2 3-Arm Caliper (inches)

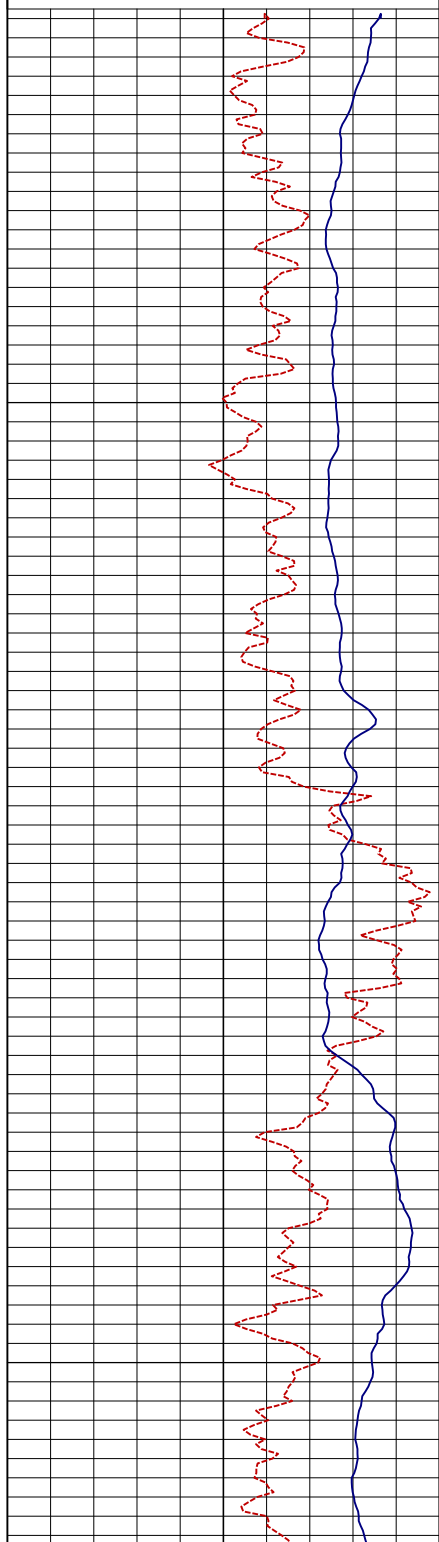
12

0 Gamma Ray (api) 200

0 16 Inch Normal (ohmmeter²/m) 500

0 Single Point (ohms)

300



600

650

700

