



5201 Woodmere Drive, Bakersfield, CA 93313-- www.welenco.com--(800) 445-9914  
 California Contractor's License No. 722373

## SONIC-VDL-LOG

FILING NO.	COMPANY <u>UNAVCO</u>		
	WELL <u>B-921</u>		
	FIELD <u>Ridgecrest</u>		
	STATE <u>California</u>	COUNTY <u>San Bernardino</u>	
	LOCATION: <u>Randsburg Wash Road</u>		OTHER SERVICES: <b>Caliper BHTV ELOG</b>
JOB NO. <b>9305</b>	SEC: <u>16</u> TWP: <u>27S</u> RGE: <u>42E</u> LAT.: <u>35° 35' 11.0"</u> LONG.: <u>117° 27' 41.0"</u> MERIDIAN.: <u>Mt. Diablo</u>		

Permanent Datum: Ground Level, Elev. 2330 Ft. Elev.: K.B. \_\_\_\_\_ Ft.  
 Log Measured From: Ground Level, 0 Ft. Above Perm. Datum D.F. \_\_\_\_\_ Ft.  
 Drilling Measured From: Ground Level G.L. 2330 Ft.

Date	<b>May. 19, 2008</b>				
Type Of Log	<b>Sonic</b>				
Run	<b>One</b>				
Depth-Driller	<b>618</b>	Ft		Ft	Ft
Depth-Logger	<b>616</b>	Ft		Ft	Ft
Top Logged Interval	<b>260</b>	Ft		Ft	Ft
Btm. Logged Interval	<b>609</b>	Ft		Ft	Ft
Type Fluid In Hole	<b>Water</b>				
Fluid Level	<b>260</b>	Ft		Ft	Ft
Max Temp	<b>86.8</b>	°F		°F	°F
Operating Rig Time	<b>1</b>	Hr		Hr	Hr
Van No.	Location	<b>LV-1</b>	<b>Bfld</b>		
Recorded By	<b>Dan Ihde</b>				
Witnessed By	<b>Liz Van Boskirk</b>				

RUN NO.	BOREHOLE RECORD			CASING RECORD			
	BIT	FROM	TO	SIZE	TYPE	FROM	TO
<b>1</b>	<b>6</b> In	<b>192</b> Ft	<b>618</b> Ft	<b>8.625</b> In	<b>Steel</b>	<b>0</b> Ft	<b>192</b> Ft
<b>2</b>	In	Ft	Ft	<b>6.0</b> In	<b>Steel</b>	<b>0</b> Ft	<b>187</b> Ft
<b>3</b>	In	Ft	Ft	In		Ft	Ft

## Miscellaneous Information

Remarks:

A recreational GPS accurate to +/- 45 feet set for Datum NAD27 was used to calculate Latitude, Longitude & Elevation values. The Section, Township, and Range then determined using the TRS program (TRS accuracy is not guaranteed). The TRS program converts Latitude and Longitude to Section, Township, and Range. The NOTICE at the bottom of this heading also applies.  
Hole filled with water prior to logging runs.  
Hole cemented up and drilled out prior to logging.

Drilled By: Steves Pump and Well Drilling

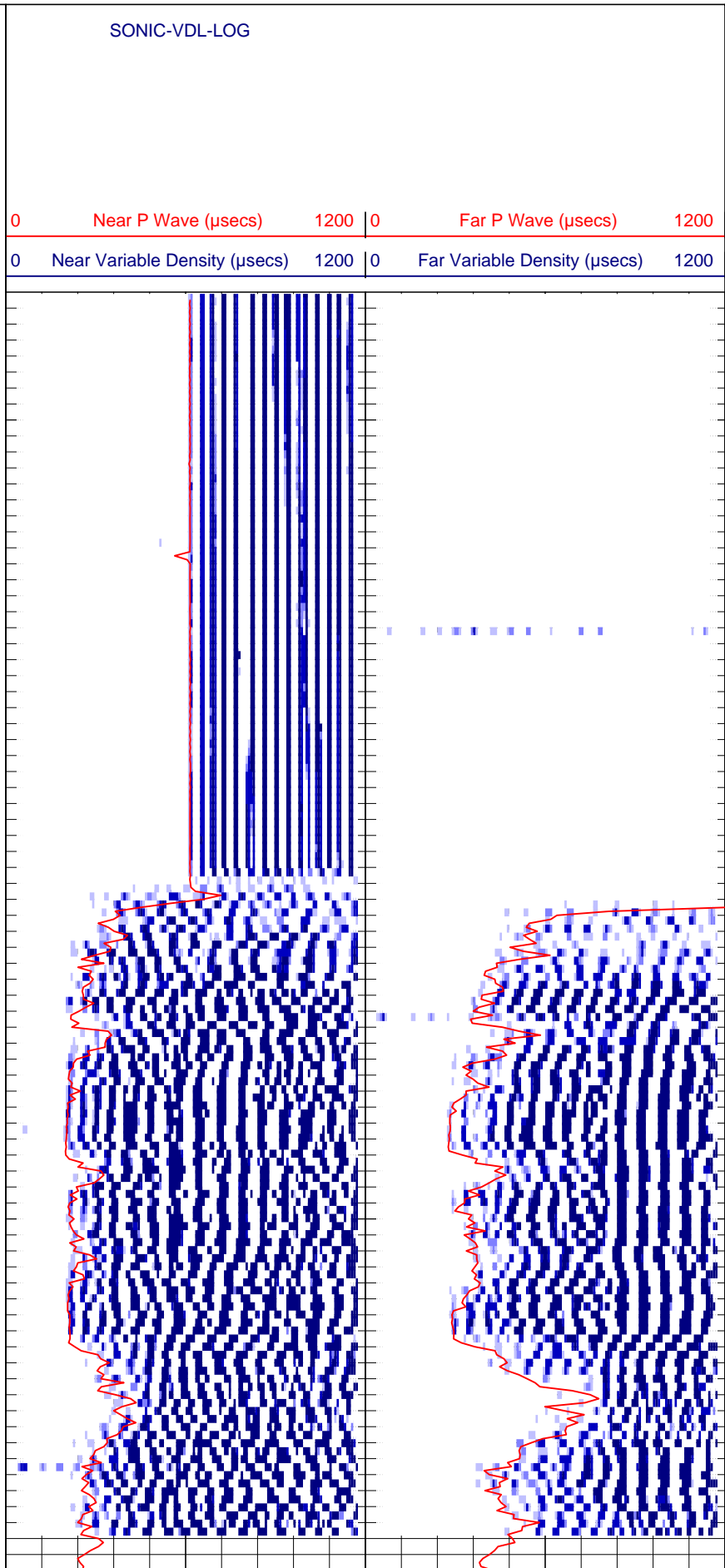
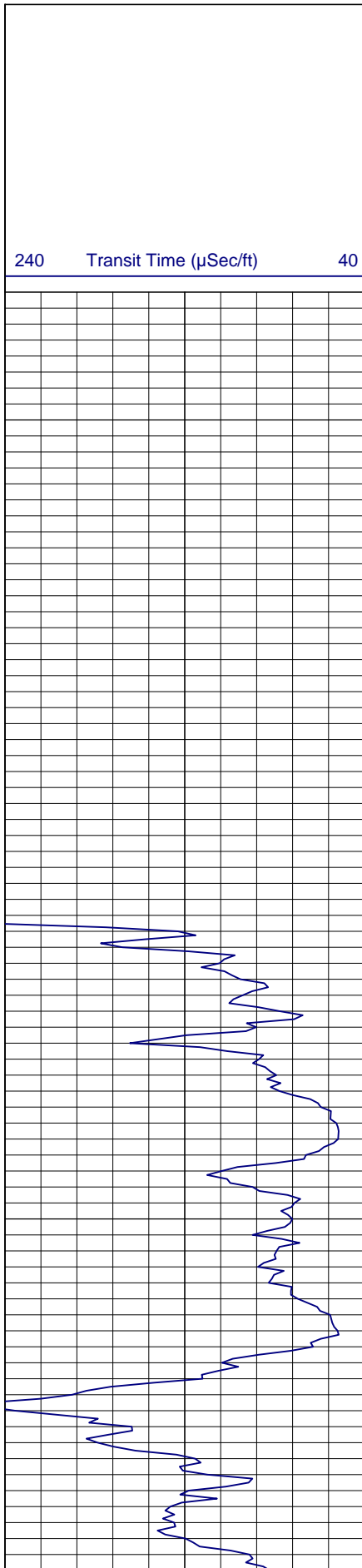
Perforated Intervals:

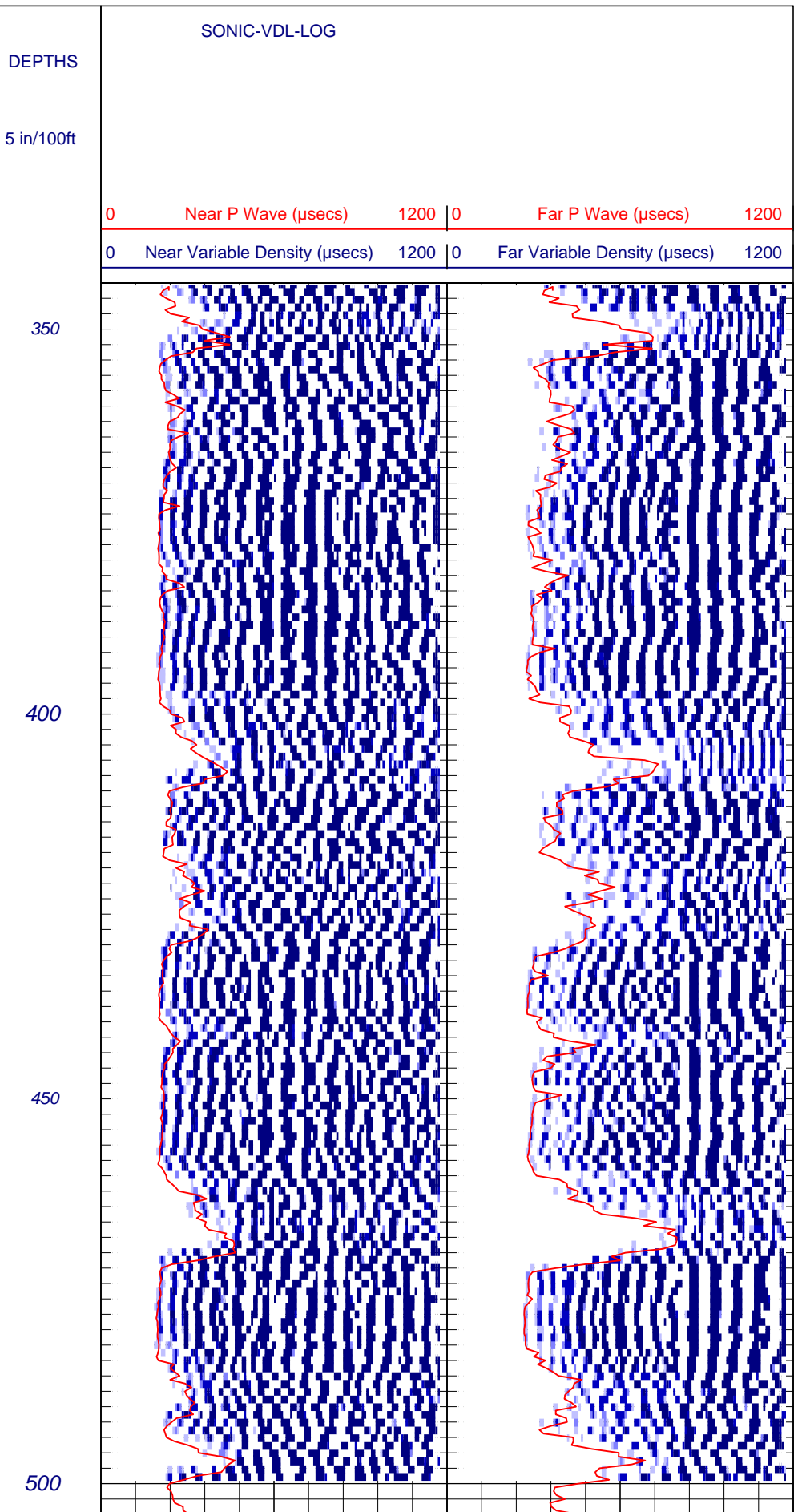
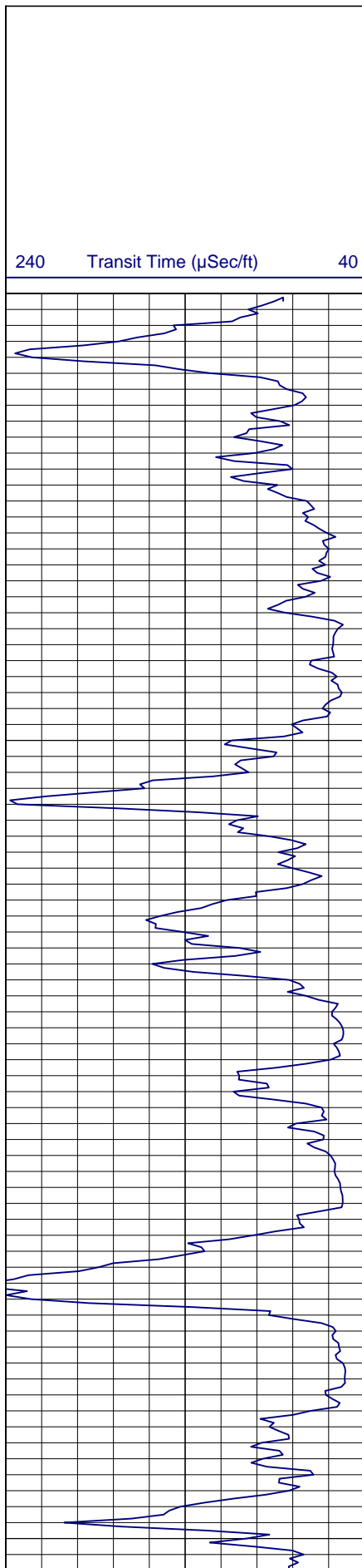

Line Speed:

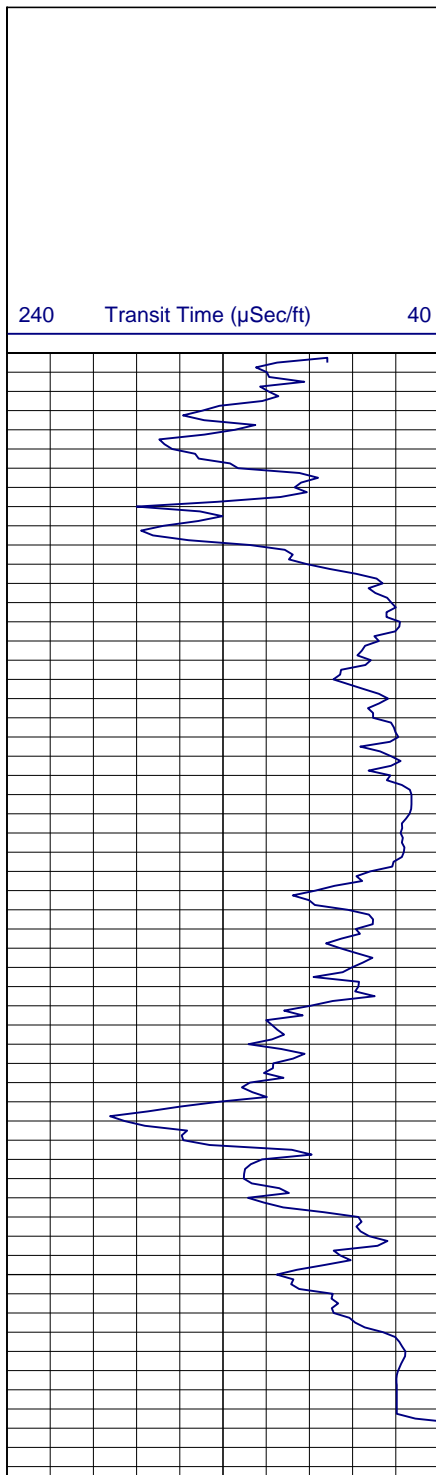

Borehole Volume Calculations:


Other Information:


**NOTICE: All interpretations are opinions based on inferences from electrical and other measurements and we do not guarantee the accuracy or correctness of any verbal or written interpretation, and we shall not, except in the case of gross or willful negligence on our part, be liable or responsible for any loss, costs, damages or expenses incurred or sustained by anyone resulting from any interpretation made by one of our officers, agents or employees. These interpretations are also subject to our General Terms and Conditions as set out in our current Price Schedule.**  
*welenco, inc. May 19, 2008*







Log Page No. 3 of 3 Pages

DEPTHS

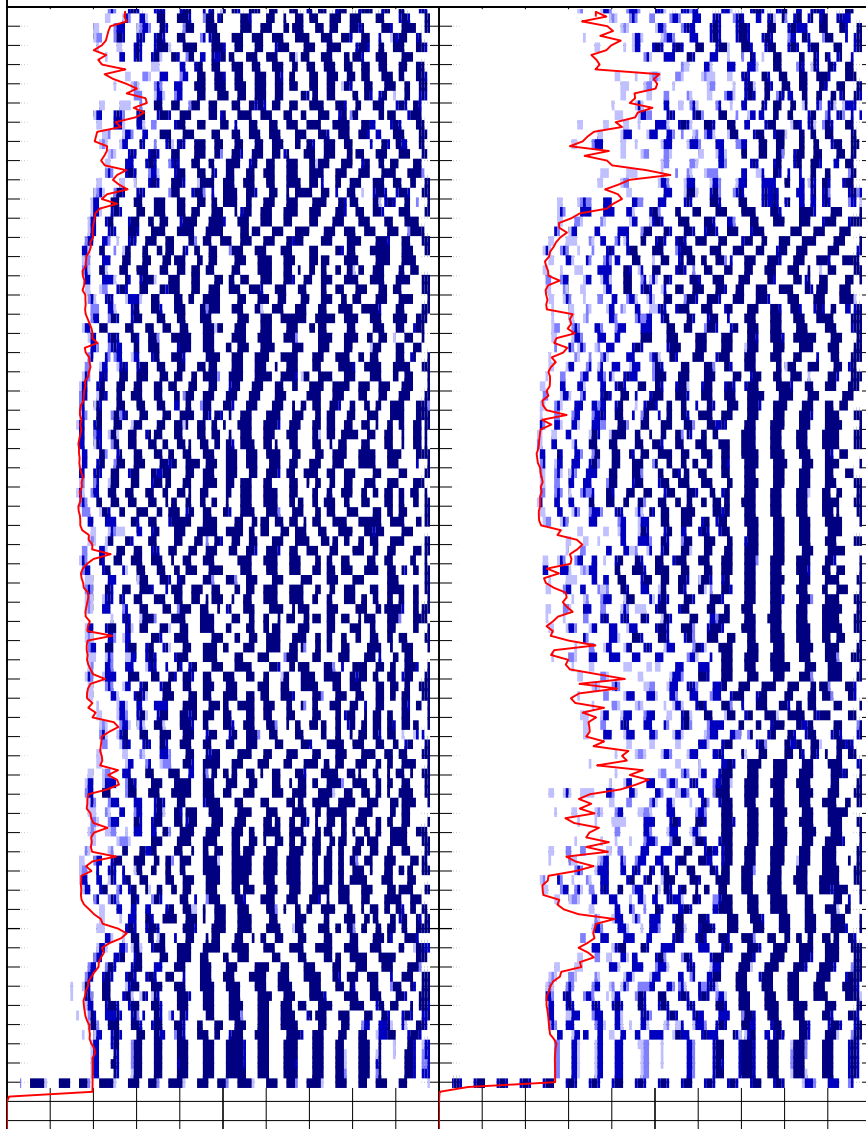
5 in/100ft

SONIC-VDL-LOG

0	Near P Wave (µsecs)	1200	0	Far P Wave (µsecs)	1200
0	Near Variable Density (µsecs)	1200	0	Far Variable Density (µsecs)	1200

550

600



Page Length: 504 - 621 Feet (117 Feet)

Time: 03:03:51 PM

Date: May 19, 2008