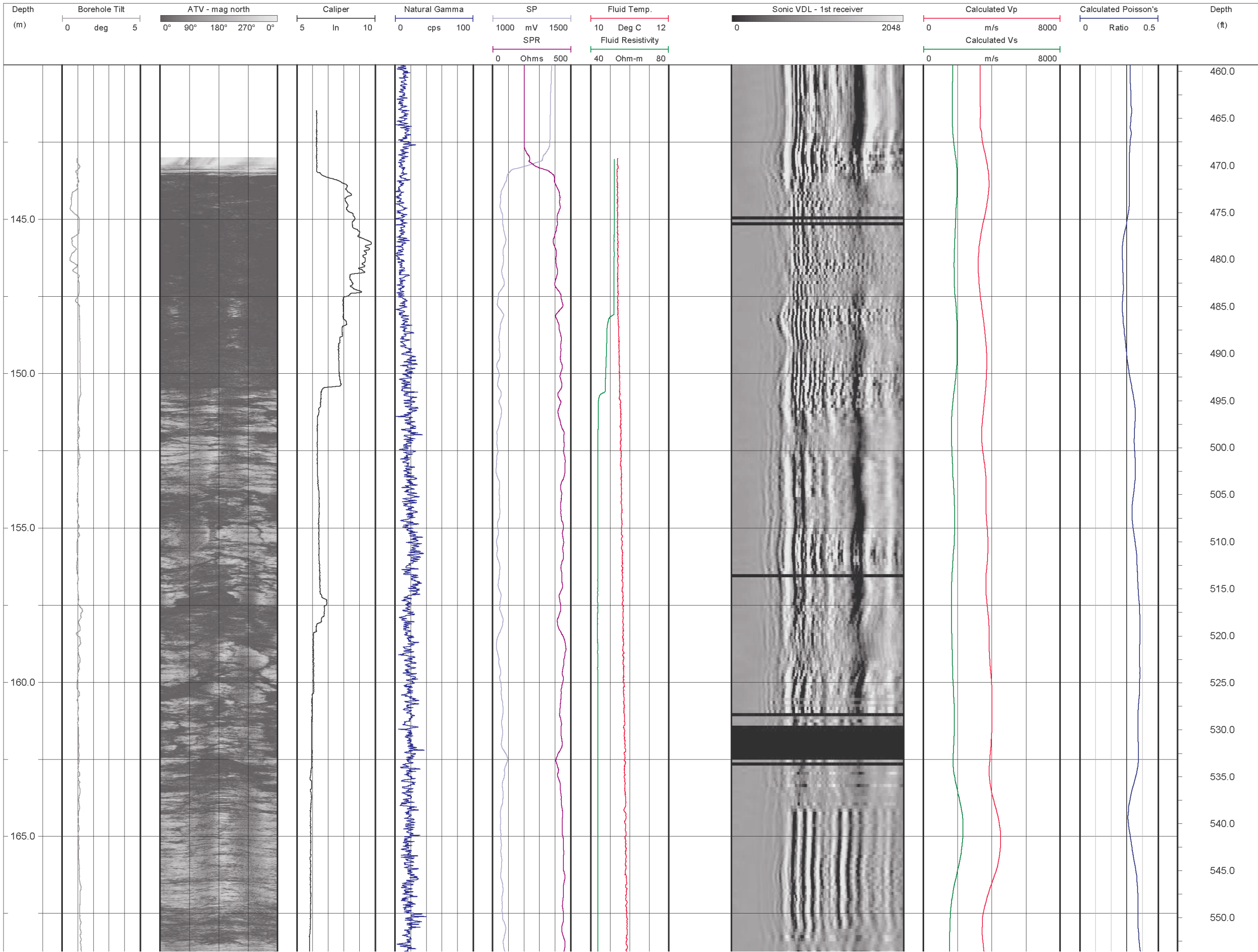


DRAWING NO. 0431326001fg35.fh11 DATE 04/07/05 DRAWN BY EL



**KEY MAP**



**INSTRUMENTATION**

**Mount Sopris Intruments (MSI)**  
 MGX-II Logging System  
 ALT ABI-40 Acoustic Televiewer  
 3-Arm Caliper (MSI model 2PCA-1000)  
 Natural Gamma, SP, SPR (MSI model 2PGA-1000)  
 Fluid Temperature/Resistivity (MSI model 2PFA-1000)  
 Full Waveform Sonic (MSI model 2SAA-1000/F)

**NOTES**

1. Depths relative to ground surface
2. Vertical boreholes drilled with 5.75" coring bit

**COORDINATES**

LATITUDE: N48.04326  
 LONGITUDE: W123.13438



**GOLDER ASSOCIATES INC.**  
 18300 NE UNION HILL ROAD, STE. 200  
 REDMOND, WA USA 98052-3333  
 TEL: (425) 883-0777  
 FAX: (425) 882-5498  
 EMAIL: dsylwester@golder.com  
 hcrow@golder.com

SUBMITTED TO:

**UNAVCO**

PROJECT:

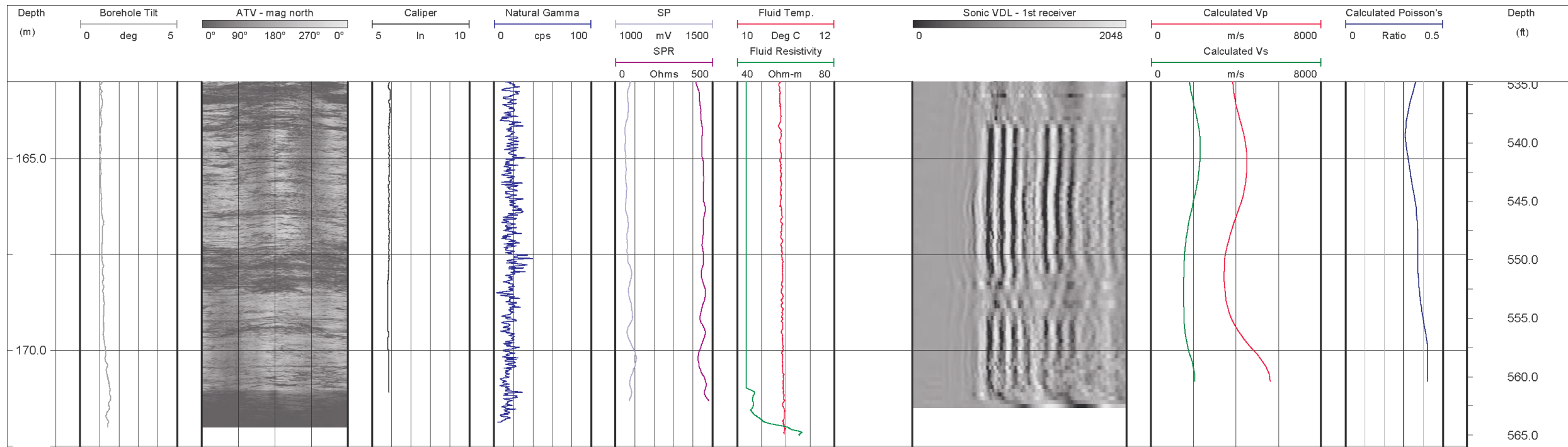
**EARTHSCOPE BOREHOLE LOG/WA**

TITLE:

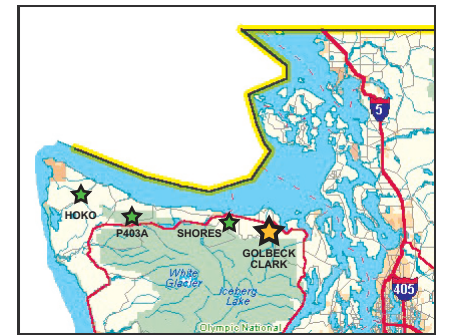
**CLARK-EAST:  
 CORED BOREHOLE**

PROJECT	043-1326	DESIGN	HC	04/07/05
FILE No.	0431326004fg35.fh11	GPHX	EL	04/07/05
REV.	0	CHECK	-	-
SCALE	AS SHOWN	REVIEW	-	-

DRAWING NO. 0431326001fg36.fh11 DATE 04/07/05 DRAWN BY EL



**KEY MAP**



**INSTRUMENTATION**

**Mount Sopris Intruments (MSI)**  
 MGX-II Logging System  
 ALT ABI-40 Acoustic Televiewer  
 3-Arm Caliper (MSI model 2PCA-1000)  
 Natural Gamma, SP, SPR (MSI model 2PGA-1000)  
 Fluid Temperature/Resistivity (MSI model 2PFA-1000)  
 Full Waveform Sonic (MSI model 2SAA-1000/F)

**NOTES**

1. Depths relative to ground surface
2. Vertical boreholes drilled with 5.75" coring bit

**COORDINATES**

LATITUDE: N48.04326  
 LONGITUDE: W123.13438



GOLDER ASSOCIATES INC.  
 18300 NE UNION HILL ROAD, STE. 200  
 REDMOND, WA USA 98052-3333  
 TEL: (425) 883-0777  
 FAX: (425) 882-5498  
 EMAIL: dsylwester@golder.com  
 hcrow@golder.com

SUBMITTED TO:

UNAVCO

PROJECT:

EARTHSCOPE BOREHOLE LOG/WA

TITLE:

**CLARK-EAST:  
 CORED BOREHOLE**

PROJECT	043-1326	DESIGN	HC	04/07/05
FILE No.	0431326004fg36.fh11	GPHX	EL	04/07/05
REV.	0	CHECK	-	-
SCALE	AS SHOWN	REVIEW	-	-

**SHEET 02/02**