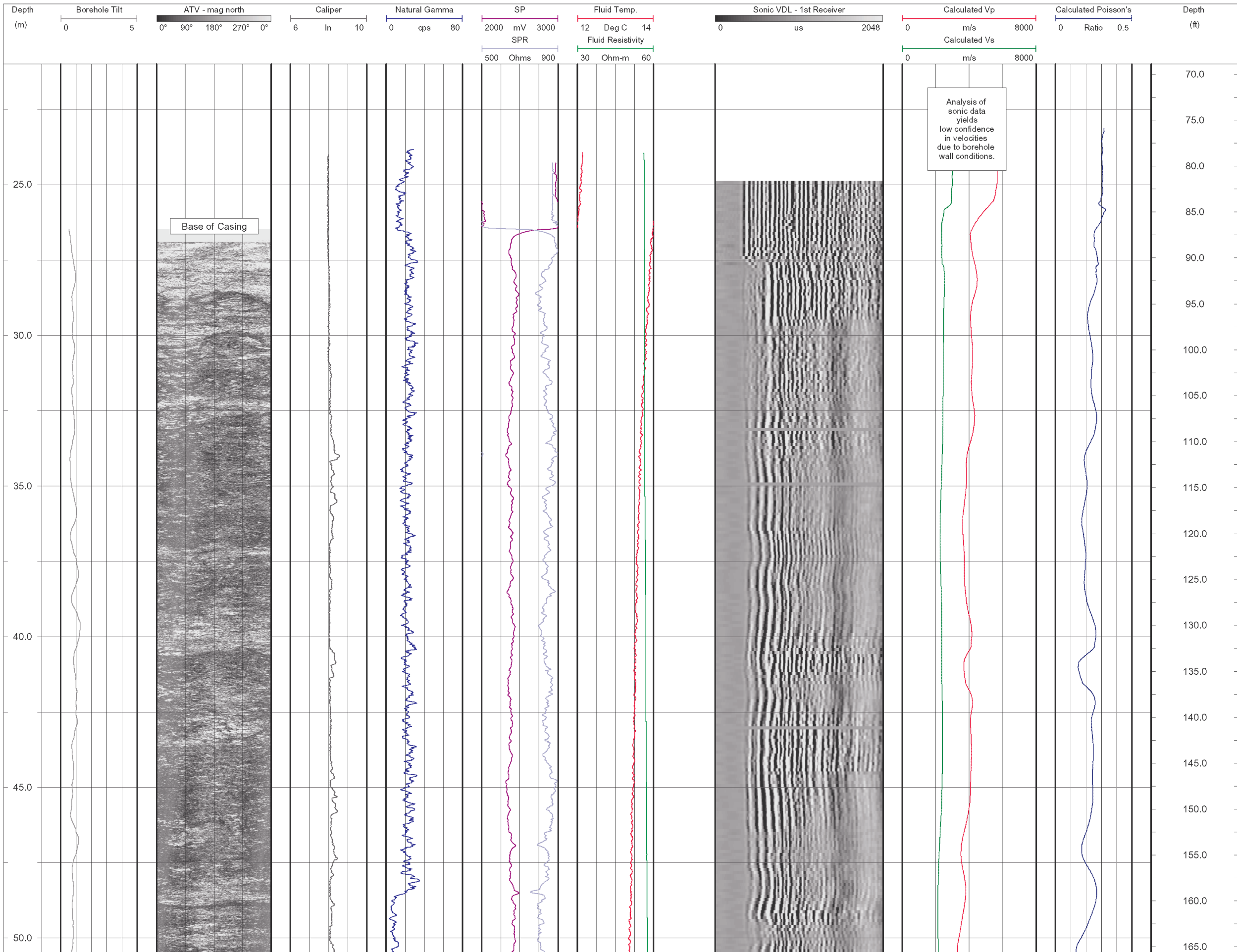
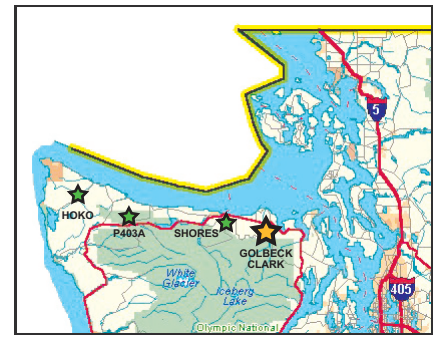


DRAWING NO. 0431326001g16.fh11 DATE 04/07/05 DRAWN BY EL



**KEY MAP**



**INSTRUMENTATION**

**Mount Sopris Inuments (MSI)**  
 MGX-II Logging System  
 ALT ABI-40 Acoustic Televiewer  
 3-Arm Caliper (MSI model 2PCA-1000)  
 Natural Gamma, SP, SPR (MSI model 2PGA-1000)  
 Fluid Temperature/Resistivity (MSI model 2PFA-1000)  
 Full Waveform Sonic (MSI model 2SAA-1000/F)

**NOTES**

1. Depths relative to ground surface
2. Vertical boreholes drilled with 8" air rotary bit

**COORDINATES**

LATITUDE: N48.05300  
 LONGITUDE: W123.13296



**GOLDER ASSOCIATES INC.**  
 18300 NE UNION HILL ROAD, STE. 200  
 REDMOND, WA USA 98052-3333  
 TEL: (425) 883-0777  
 FAX: (425) 882-5498  
 EMAIL: dsylwester@golder.com  
 hcrow@golder.com

SUBMITTED TO:

UNAVCO

PROJECT:

EARTHSCOPE BOREHOLE LOG/WA

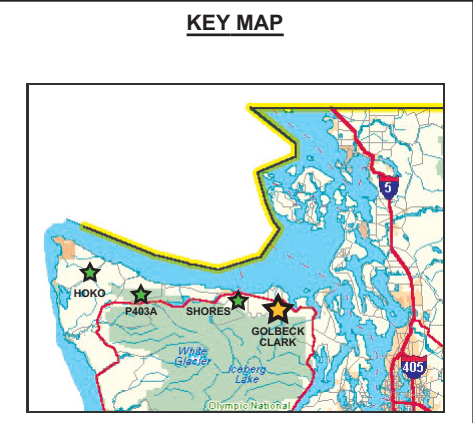
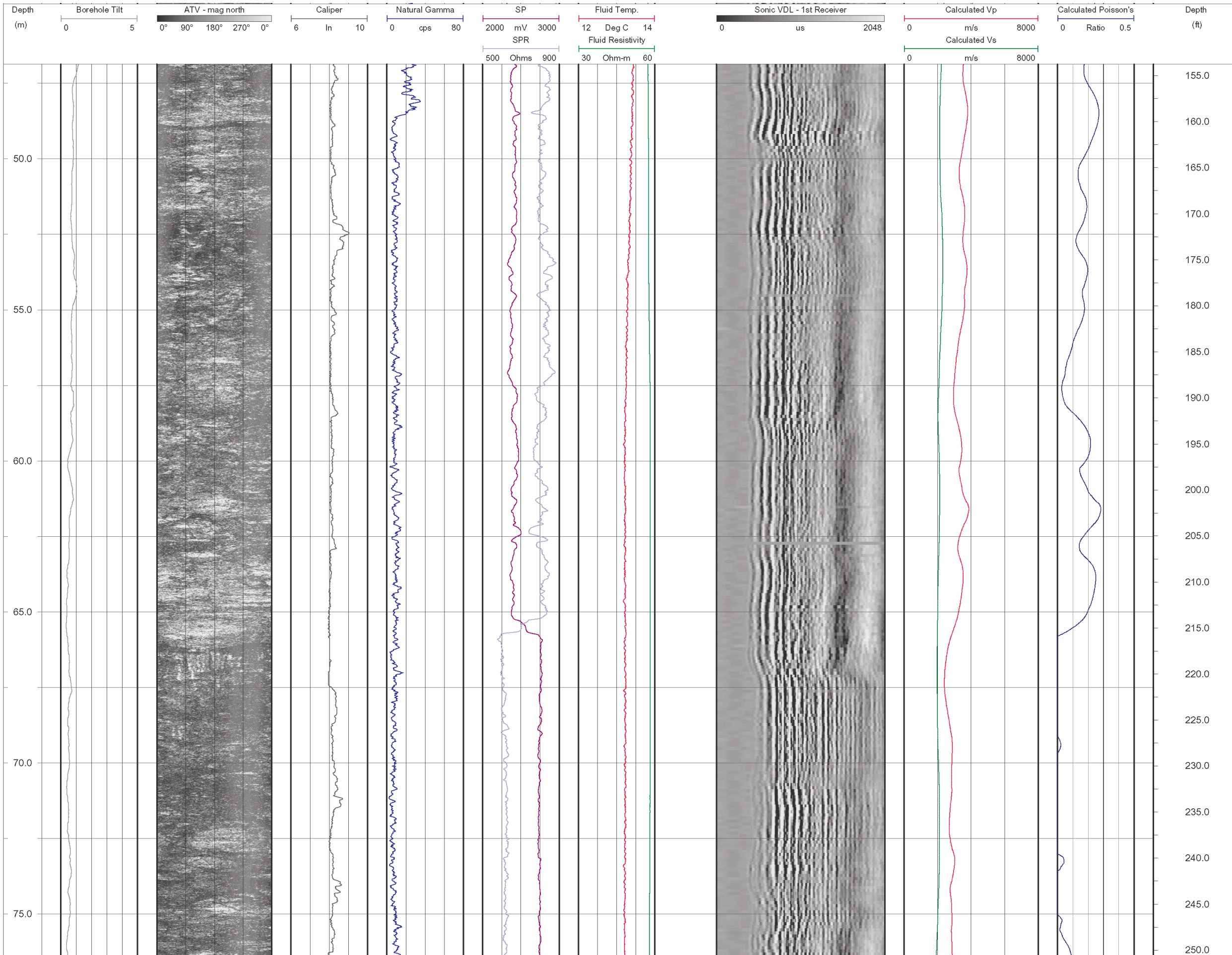
TITLE:

**CLARK-EAST: ROTARY DRILLED BOREHOLE**

PROJECT	043-1326	DESIGN	HC	12/06/04
FILE No.	0431326004fg16.fh11	GPHX	EL	04/07/05
REV.	0	CHECK	-	-
SCALE	AS SHOWN	REVIEW	-	-

**SHEET 01/05**


DRAWING NO. 0431326001g17.fh11 DATE 04/07/05 DRAWN BY EL



**INSTRUMENTATION**  
**Mount Sopris Instruments (MSI)**  
 MGX-II Logging System  
 ALT ABI-40 Acoustic Televiewer  
 3-Arm Caliper (MSI model 2PCA-1000)  
 Natural Gamma, SP, SPR (MSI model 2PGA-1000)  
 Fluid Temperature/Resistivity (MSI model 2PFA-1000)  
 Full Waveform Sonic (MSI model 2SAA-1000/F)

**NOTES**  
 1. Depths relative to ground surface  
 2. Vertical boreholes drilled with 8" air rotary bit

**COORDINATES**  
 LATITUDE: N48.05300  
 LONGITUDE: W123.13296

  
**GOLDER ASSOCIATES INC.**  
 18300 NE UNION HILL ROAD, STE. 200  
 REDMOND, WA USA 98052-3333  
 TEL: (425) 883-0777  
 FAX: (425) 882-5498  
 EMAIL: dsylwester@golder.com  
 hcrow@golder.com

SUBMITTED TO:  
**UNAVCO**

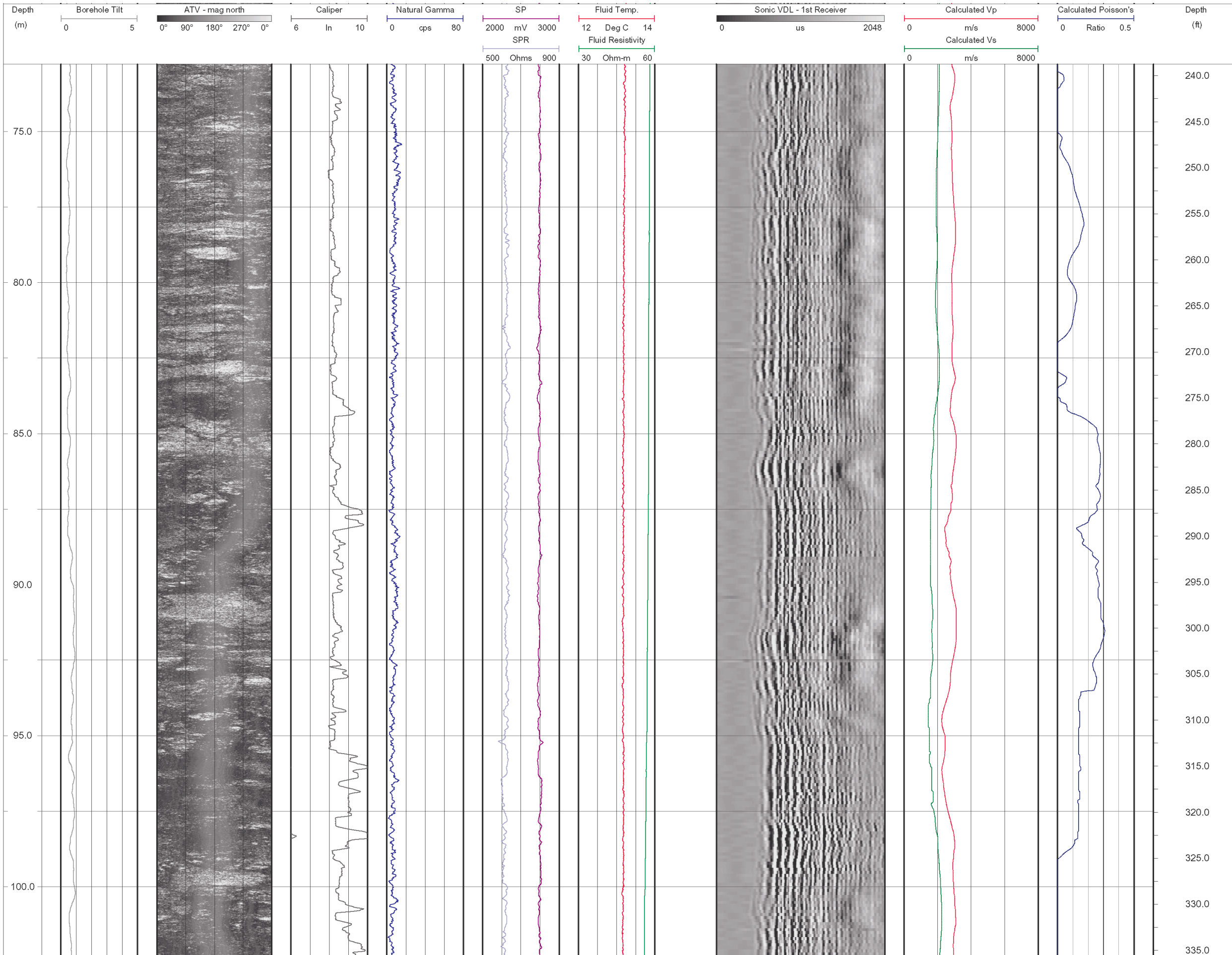
PROJECT:  
**EARTHSCOPE BOREHOLE LOG/WA**

TITLE:  
**CLARK-EAST: ROTARY DRILLED BOREHOLE**

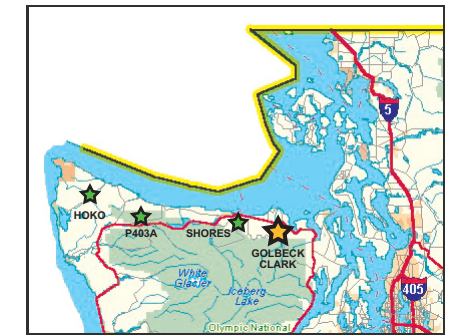
PROJECT	043-1326	DESIGN	HC	12/06/04
FILE No.	0431326004fg17.fh11	GPHX	EL	04/07/05
REV.	0	CHECK	-	-
SCALE	AS SHOWN	REVIEW	-	-

**SHEET 02/05**

DRAWING NO. 0431326001g18.fh11 DATE 04/07/05 DRAWN BY EL



**KEY MAP**



**INSTRUMENTATION**

**Mount Sopris Intruments (MSI)**  
 MGX-II Logging System  
 ALT ABI-40 Acoustic Televiewer  
 3-Arm Caliper (MSI model 2PCA-1000)  
 Natural Gamma, SP, SPR (MSI model 2PGA-1000)  
 Fluid Temperature/Resistivity (MSI model 2PFA-1000)  
 Full Waveform Sonic (MSI model 2SAA-1000/F)

**NOTES**

1. Depths relative to ground surface
2. Vertical boreholes drilled with 8" air rotary bit

**COORDINATES**

LATITUDE: N48.05300  
 LONGITUDE: W123.13296



**GOLDER ASSOCIATES INC.**  
 18300 NE UNION HILL ROAD, STE. 200  
 REDMOND, WA USA 98052-3333  
 TEL: (425) 883-0777  
 FAX: (425) 882-5498  
 EMAIL: dsylwester@golder.com  
 hcrow@golder.com

SUBMITTED TO:

UNAVCO

PROJECT:

EARTHSCOPE BOREHOLE LOG/WA

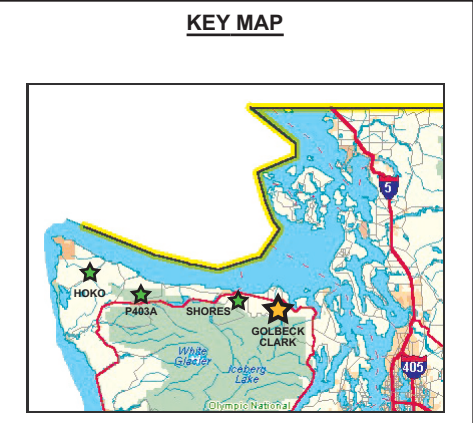
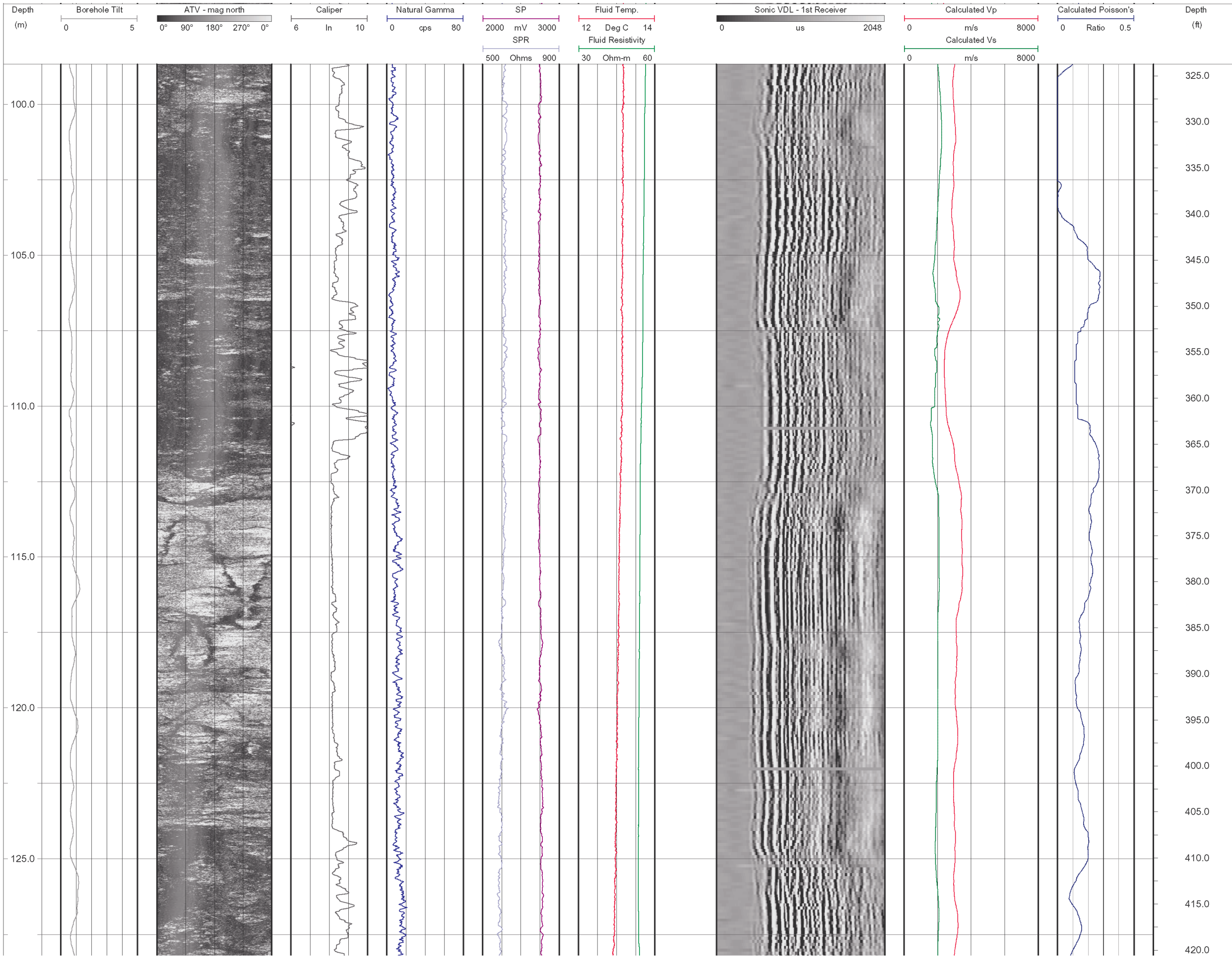
TITLE:

**CLARK-EAST: ROTARY  
 DRILLED BOREHOLE**

PROJECT	043-1326	DESIGN	HC	12/06/04
FILE No.	0431326004fg18.fh11	GPHX	EL	04/07/05
REV.	0	CHECK	-	-
SCALE	AS SHOWN	REVIEW	-	-

**SHEET 03/05**

DRAWING NO. 0431326001g19.fh11 DATE 04/07/05 DRAWN BY EL



### INSTRUMENTATION

**Mount Sopris Inuments (MSI)**  
 MGX-II Logging System  
 ALT ABI-40 Acoustic Televiewer  
 3-Arm Caliper (MSI model 2PCA-1000)  
 Natural Gamma, SP, SPR (MSI model 2PGA-1000)  
 Fluid Temperature/Resistivity (MSI model 2PFA-1000)  
 Full Waveform Sonic (MSI model 2SAA-1000/F)

### NOTES

1. Depths relative to ground surface
2. Vertical boreholes drilled with 8" air rotary bit

### COORDINATES

LATITUDE: N48.05300  
 LONGITUDE: W123.13296

**Golder Associates**  
 GOLDER ASSOCIATES INC.  
 18300 NE UNION HILL ROAD, STE. 200  
 REDMOND, WA USA 98052-3333  
 TEL: (425) 883-0777  
 FAX: (425) 882-5498  
 EMAIL: dsylwester@golder.com  
 hcrow@golder.com

SUBMITTED TO:  
**UNAVCO**

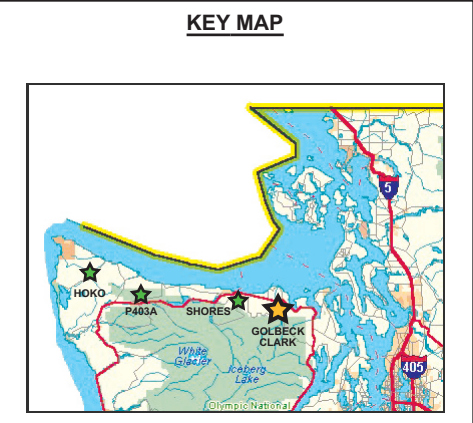
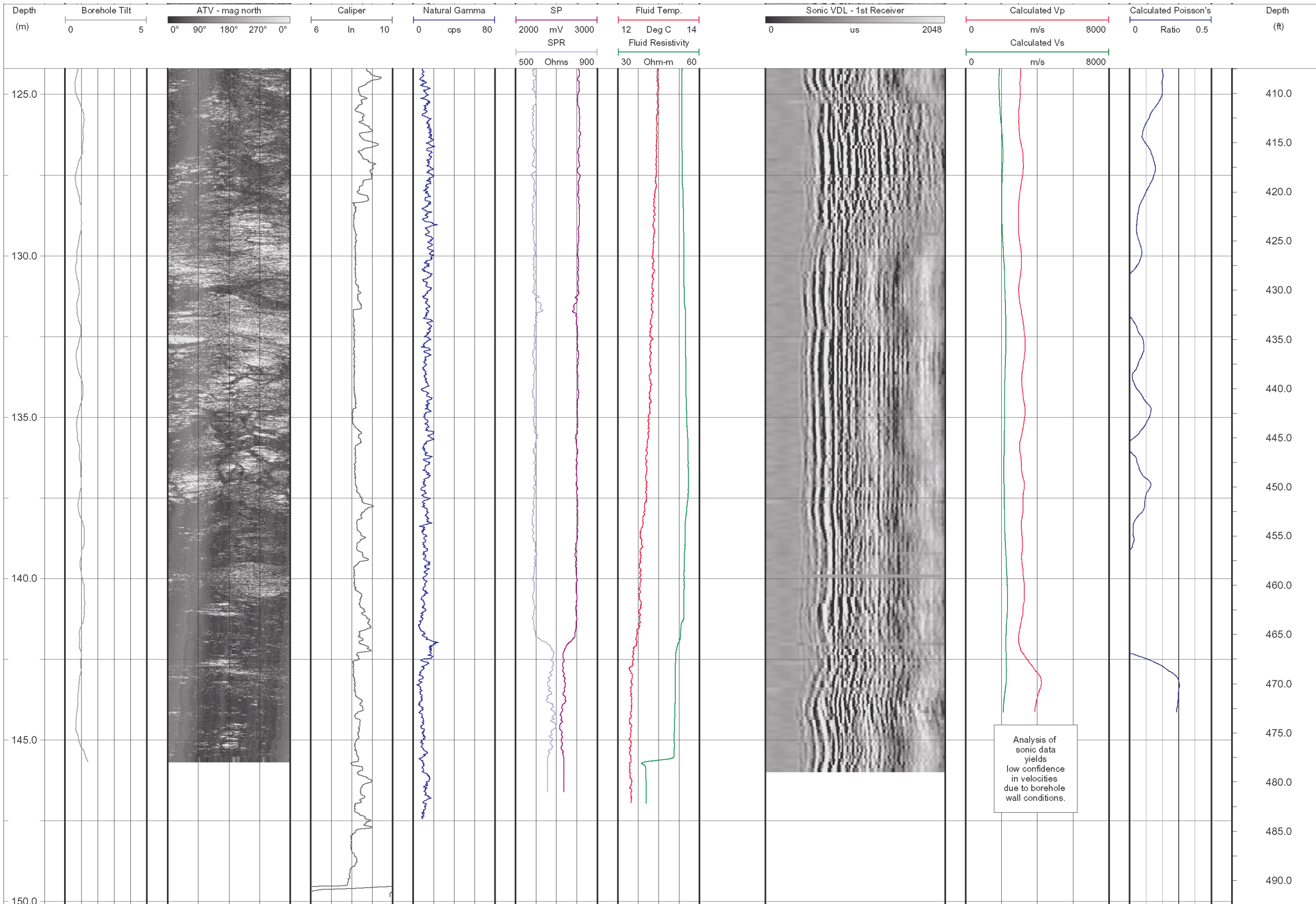
PROJECT:  
**EARTHSCOPE BOREHOLE LOG/WA**

TITLE:  
**CLARK-EAST: ROTARY DRILLED BOREHOLE**

PROJECT	043-1326	DESIGN	HC	12/06/04
FILE No.	0431326004fg19.fh11	GPHX	EL	04/07/05
REV.	0	CHECK	-	-
SCALE	AS SHOWN	REVIEW	-	-

**SHEET 04/05**


DRAWING NO. 0431326001fg20.rh11 DATE 04/07/05 DRAWN BY EL



**INSTRUMENTATION**  
**Mount Sopris Instruments (MSI)**  
 MGX-II Logging System  
 ALT ABI-40 Acoustic Televiewer  
 3-Arm Caliper (MSI model 2PCA-1000)  
 Natural Gamma, SP, SPR (MSI model 2PGA-1000)  
 Fluid Temperature/Resistivity (MSI model 2PFA-1000)  
 Full Waveform Sonic (MSI model 2SAA-1000/F)

**NOTES**  
 1. Depths relative to ground surface  
 2. Vertical boreholes drilled with 8" air rotary bit

**COORDINATES**  
 LATITUDE: N48.05300  
 LONGITUDE: W123.13296

  
**Golder Associates**  
 GOLDER ASSOCIATES INC.  
 18300 NE UNION HILL ROAD, STE. 200  
 REDMOND, WA USA 98052-3333  
 TEL: (425) 883-0777  
 FAX: (425) 882-5498  
 EMAIL: dsylwester@golder.com  
 hcrow@golder.com

SUBMITTED TO:  
 UNAVCO

PROJECT:  
 EARTHSCOPE BOREHOLE LOG/WA

TITLE:  
**CLARK-EAST: ROTARY DRILLED BOREHOLE**

PROJECT	043-1326	DESIGN	HC	12/06/04
FILE No.	0431326004fg20.rh11	GPHX	EL	04/07/05
REV.	0	CHECK	-	-
SCALE	AS SHOWN	REVIEW	-	-

**SHEET 05/05**