

Job No. 13390
 Company WDC EXPLORATION & WELLS
 Well B-093
 Field ANZA
 County RIVERSIDE State CA

Location: TRIPP FLATS STATION
 Sec. Twp. Rge. Other Services: caliber

Permanent Datum	G.L		Elevation above perm. datum	Elevation
Log Measured From	G.L	0'		K.B. D.F. G.L.
Drilling Measured From	G.L			
Date		09-07-07		
Run Number		ONE		
Depth Driller		803'		
Depth Logger		802'		
Bottom Logged Interval		801'		
Top Log Interval		394.5'		
Casing Driller		8.625" @ 394.5'		
Casing Logger		394.5'		
Bit Size		6.125"		
Type Fluid in Hole		WATER		
Density / Viscosity		N/A		
pH / Fluid Loss		N/A		
Source of Sample		N/A		
Rm @ Meas. Temp		N/A		
Rmf @ Meas. Temp		N/A		
Rmc @ Meas. Temp		N/A		
Source of Rmf / Rmc		N/A		
Rm @ BHT		N/A		
Time Circulation Stopped		2 HOURS		
Time Logger on Bottom		5:00 PM		
Max. Recorded Temperature		N/A		
Equipment Number		PS-1		
Location		L.A.		
Recorded By		ABREAU		
Witnessed By		S. ALM		

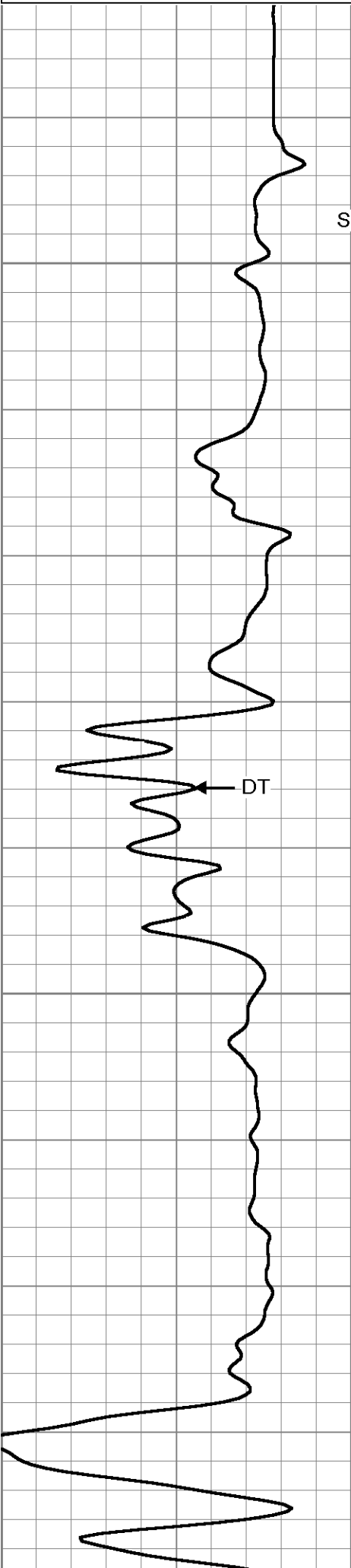
<<< Fold Here >>>

All interpretations are opinions based on inferences from electrical or other measurements and we cannot and do not guarantee the accuracy or correctness of any interpretation, and we shall not, except in the case of gross or willful negligence on our part, be liable or responsible for any loss, costs, damages, or expenses incurred or sustained by anyone resulting from any interpretation made by any of our officers, agents or employees. These interpretations are also subject to our general terms and conditions set out in our current Price Schedule.

Comments

Database File: 13390.db
 Dataset Pathname: WDC/well/run1/SNC
 Presentation Format: SLT
 Dataset Creation: Fri Sep 07 17:02:09 2007 by Log Warrior Version 6.6
 Charted by: Depth in Feet scaled 1:120

250	DT (usec/ft)	0	200	Variable Density 5 ft	1600	200	Variable Density 5 ft	1600
-----	--------------	---	-----	-----------------------	------	-----	-----------------------	------

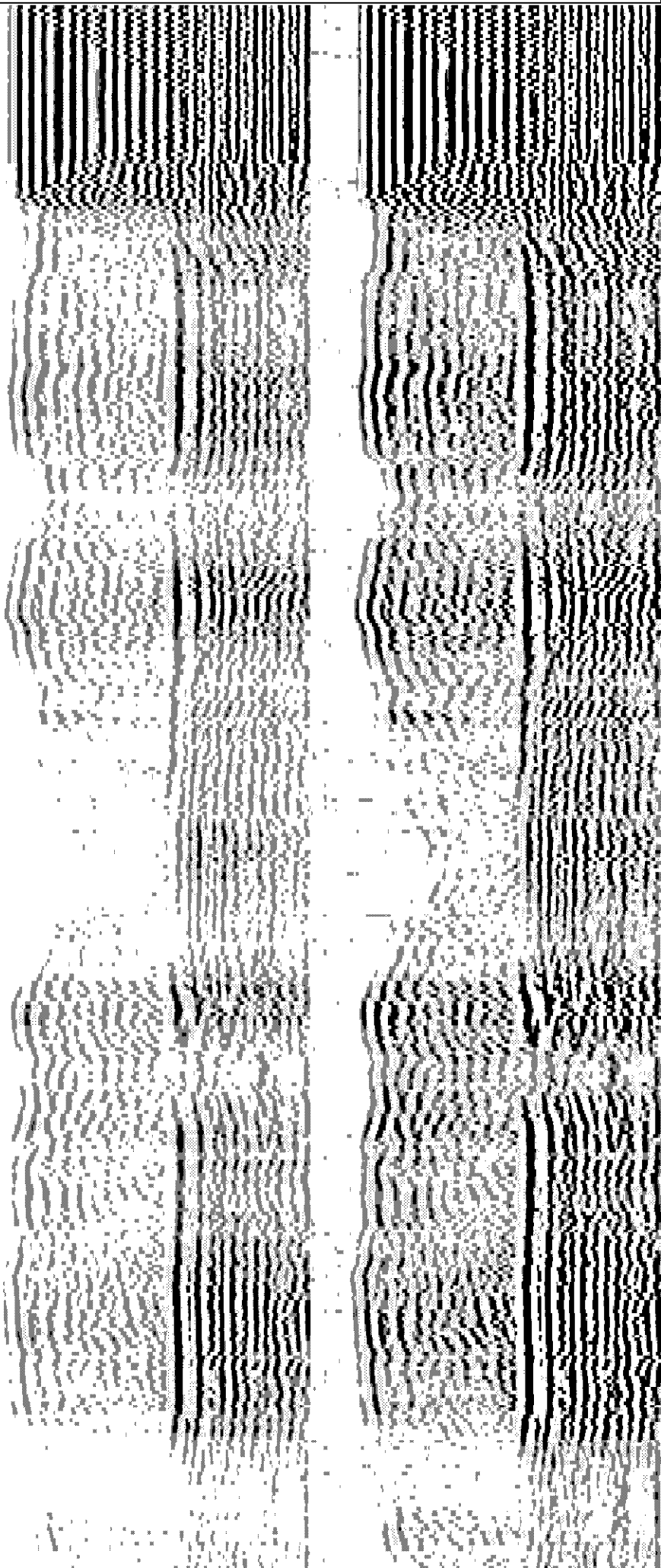


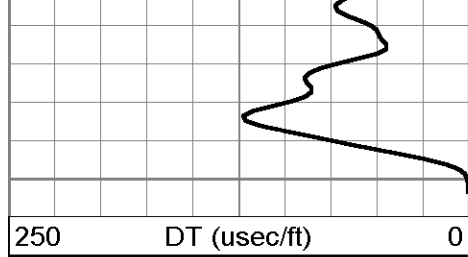
Surface Casing

400

DT

450





500

