



5201 Woodmere Drive, Bakersfield, CA 93313-- www.welenco.com--(800) 445-9914
California Contractor's License No. 722373

3-ARM CALIPER LOG

FILING NO.	COMPANY	UNAVCO		
	WELL	Blackwell II B900		
	FIELD	W. Lost hills		
	STATE	California	COUNTY	Kern
JOB NO. 7095	LOCATION: Approx 4 Mi. E. of Hwy 46 & Kecks Rd.			OTHER SERVICES: Acoustical Televiow ELOG Sonic
	SEC: 11 TWP: 26S RGE: 18E LAT.: 35° 41' 10.0" LONG.: 120° 0' 6.5" MERIDIAN.: Mt. Diablo			

Permanent Datum: **Top of Casing**, Elev. **699** Ft. Elev.: K.B. _____ Ft.
 Log Measured From: **Top of Casing**, **0** Ft. Above Perm. Datum D.F. _____ Ft.
 Drilling Measured From: **Ground Level** G.L. **699** Ft.

Run	One						
Date	Aug. 08, 2007						
Depth-Driller	800	Ft		Ft		Ft	Ft
Depth-Logger	759	Ft		Ft		Ft	Ft
Top Logged Interval	369	Ft		Ft		Ft	Ft
Btm. Logged Interval	758	Ft		Ft		Ft	Ft
Casing-Driller	6.25	In @	Ft	In @	Ft	In @	Ft
Casing-Logger	6.25	In @	Ft	In @	Ft	In @	Ft
Bit Size	6	In		In		In	In
Time On Bottom							
Type Fluid In Hole	Water						
Density	Viscosity						
pH	Fluid Loss		ml		ml		ml
Source of Sample							
Rm @ Measured Temp.	N/A	@	°F	@	°F	@	°F
Rmf @ Measured Temp.	N/A	@	°F	@	°F	@	°F
Rmc @ Measured Temp.		@	°F	@	°F	@	°F
Source Rmf	Rmc						
Rm @ BHT		@	°F	@	°F	@	°F
Time Since Circulation	N/A		Hr		Hr		Hr
Max. Rec. Temp.			°F		°F		°F
Van No.	Location	L-18	Svg				
Recorded By	Mitch Tullis						
Witnessed By	Sarah Venator						

Miscellaneous Information

A recreational GPS accurate to +/- 45 feet set for Datum NAD27 was used to calculate Latitude, Longitude & Elevation values. The Section, Township, and Range then determined using the TRS program (TRS accuracy is not guaranteed). The TRS program converts Latitude and Longitude to Section, Township, and Range. The NOTICE at the bottom of this heading also applies.

Drilled By:

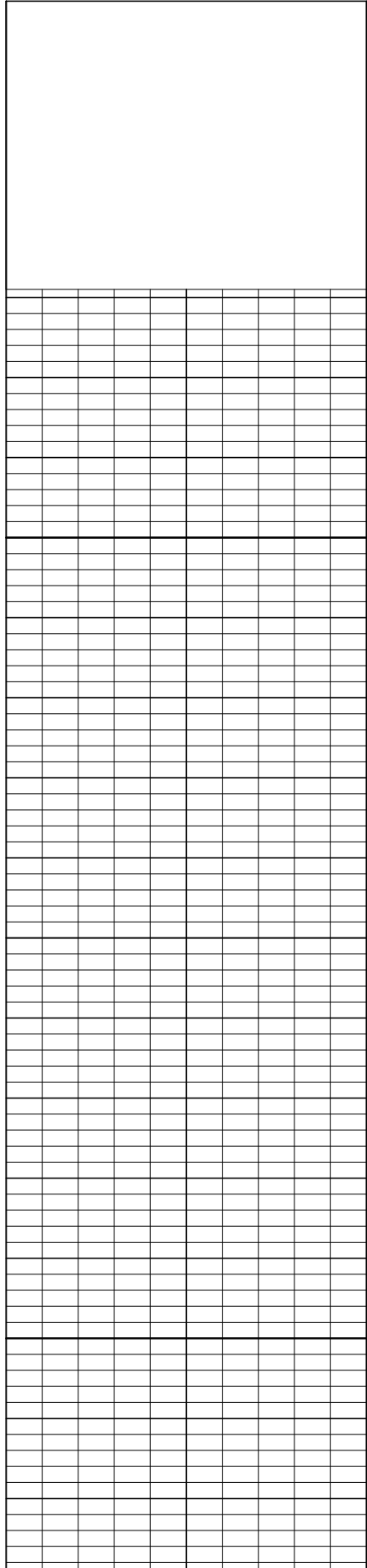
NOTICE

All interpretations are opinions based on inferences from electrical and other measurements and we do not guarantee the accuracy or correctness of any verbal or written interpretation, and we shall not, except in the case of gross or willful negligence on our part, be liable or responsible for any loss, costs, damages or expenses incurred or sustained by anyone resulting from any interpretation made by one of our officers, agents or employees. These interpretations are also subject to our General Terms and Conditions as set out in our current Price Schedule.
welenco, inc. August 08, 2007

3-ARM CALIPER LOG

DEPTHS

5 in/100ft



369

400

450

500

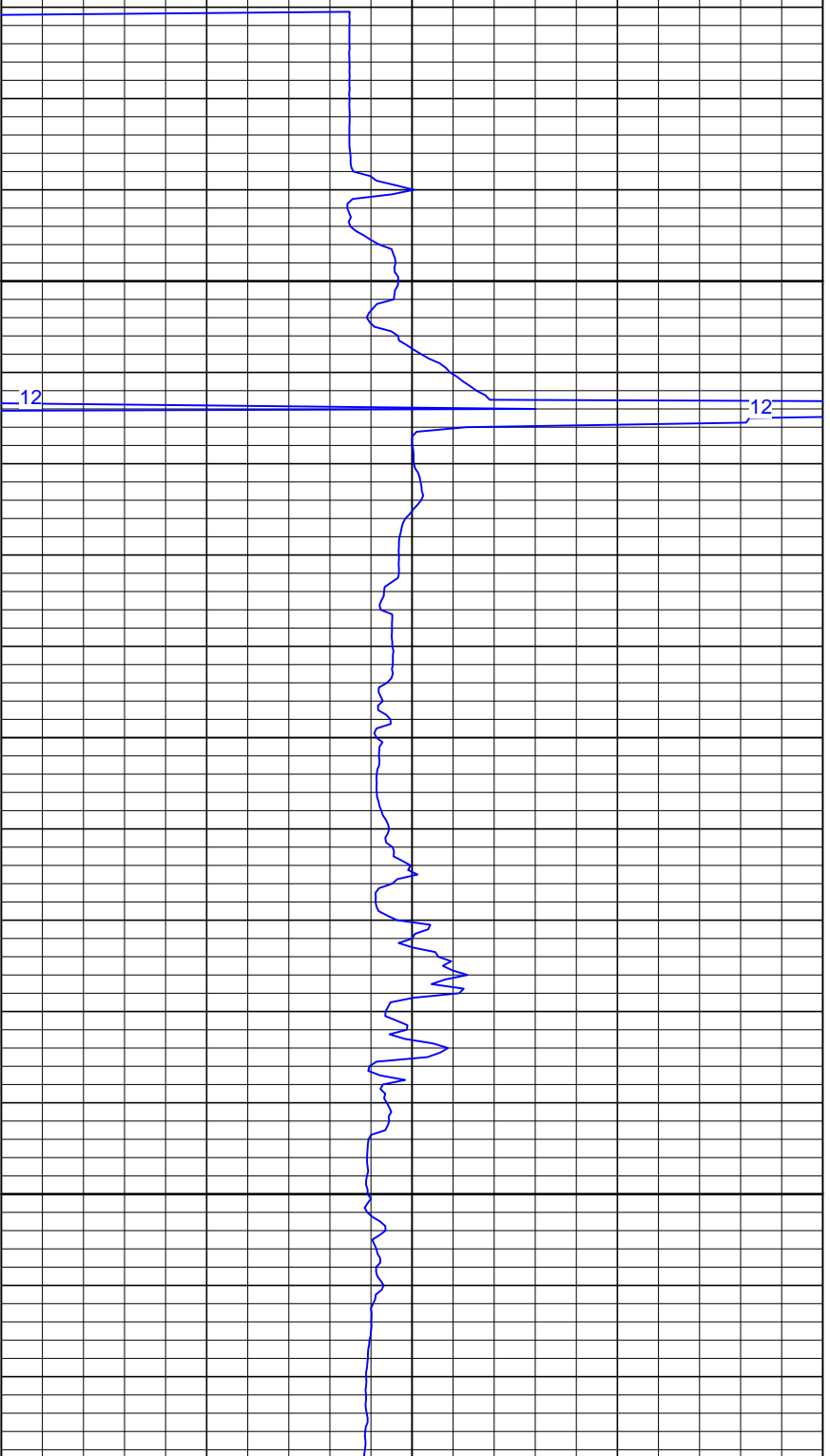
2

3-Arm Caliper (inches)

12

12

12



3-ARM CALIPER LOG

DEPTHS

5 in/100ft

2

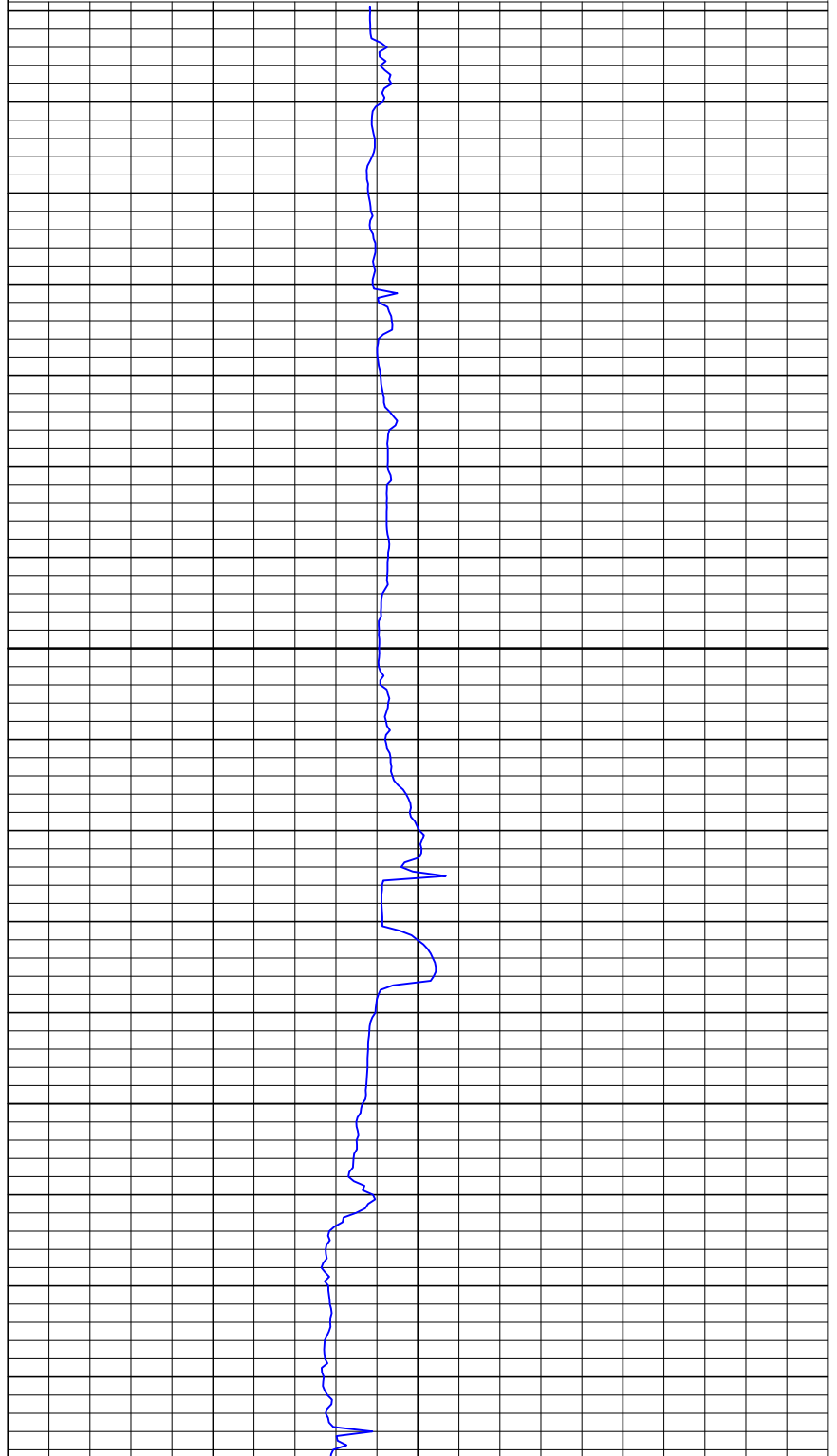
3-Arm Caliper (inches)

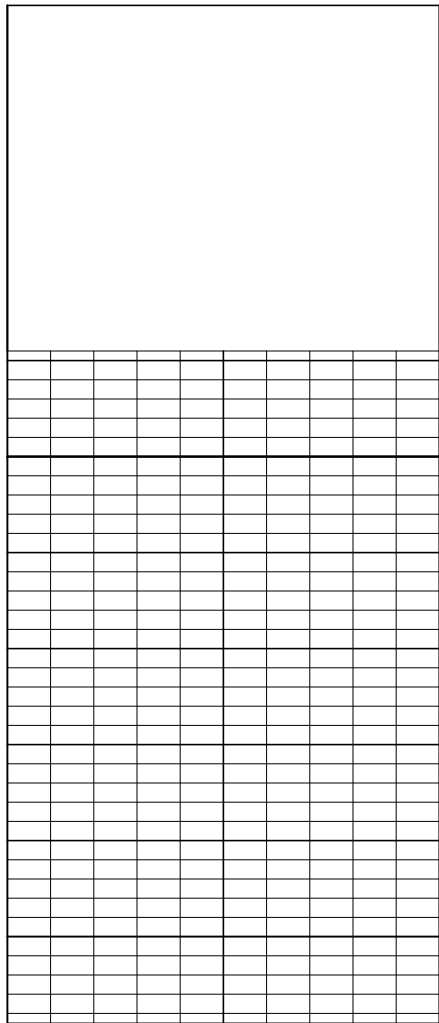
12

550

600

650





DEPTHS

5 in/100ft

700

750

3-ARM CALIPER LOG

2

3-Arm Caliper (inches)

12

