



5201 Woodmere Drive, Bakersfield, CA 93313-- www.welenco.com--(800) 445-9914
California Contractor's License No. 722373

ELECTRIC - GAMMA RAY - TEMPERATURE LOG

FILING NO.	COMPANY <u>UNAVCO</u>		
	WELL <u>Blackwell II B900</u>		
	FIELD <u>W. Lost hills</u>		
	STATE <u>California</u>	COUNTY <u>Kern</u>	
	LOCATION: <u>Approx 4 Mi. E. of Hwy 46 & Kecks Rd.</u>		OTHER SERVICES: <u>Acoustical Televue Caliper Sonic</u>
JOB NO. 7095	SEC: <u>11</u> TWP: <u>26S</u> RGE: <u>18E</u> LAT.: <u>35° 41' 10.0"</u> LONG.: <u>120° 0' 6.5"</u> MERIDIAN.: <u>Mt. Diablo</u>		

Permanent Datum: Top of Casing, Elev. 699 Ft. Elev.: K.B. _____ Ft.
 Log Measured From: Top of Casing, 0 Ft. Above Perm. Datum D.F. _____ Ft.
 Drilling Measured From: Ground Level G.L. 699 Ft.

Run	<u>One</u>						
Date	<u>Aug. 08, 2007</u>						
Depth-Driller	<u>800</u>	Ft		Ft		Ft	Ft
Depth-Logger	<u>759</u>	Ft		Ft		Ft	Ft
Top Logged Interval	<u>380</u>	Ft		Ft		Ft	Ft
Btm. Logged Interval	<u>758</u>	Ft		Ft		Ft	Ft
Casing-Driller	<u>6.25</u>	In @	Ft	In @	Ft	In @	Ft
Casing-Logger	<u>6.25</u>	In @	Ft	In @	Ft	In @	Ft
Bit Size	<u>6</u>	In		In		In	In
Time On Bottom							
Type Fluid In Hole	<u>Water</u>						
Density	Viscosity						
pH	Fluid Loss		ml		ml		ml
Source of Sample							
Rm @ Measured Temp.	<u>N/A</u>	@	°F	@	°F	@	°F
Rmf @ Measured Temp.	<u>N/A</u>	@	°F	@	°F	@	°F
Rmc @ Measured Temp.		@	°F	@	°F	@	°F
Source Rmf	Rmc						
Rm @ BHT		@	°F	@	°F	@	°F
Time Since Circulation	<u>N/A</u>		Hr		Hr		Hr
Max. Rec. Temp.	<u>76.6</u>		°F		°F		°F
Van No.	Location	<u>L-18</u>	<u>Svg</u>				
Recorded By	<u>Mitch Tullis</u>						
Witnessed By	<u>Sarah Venator</u>						

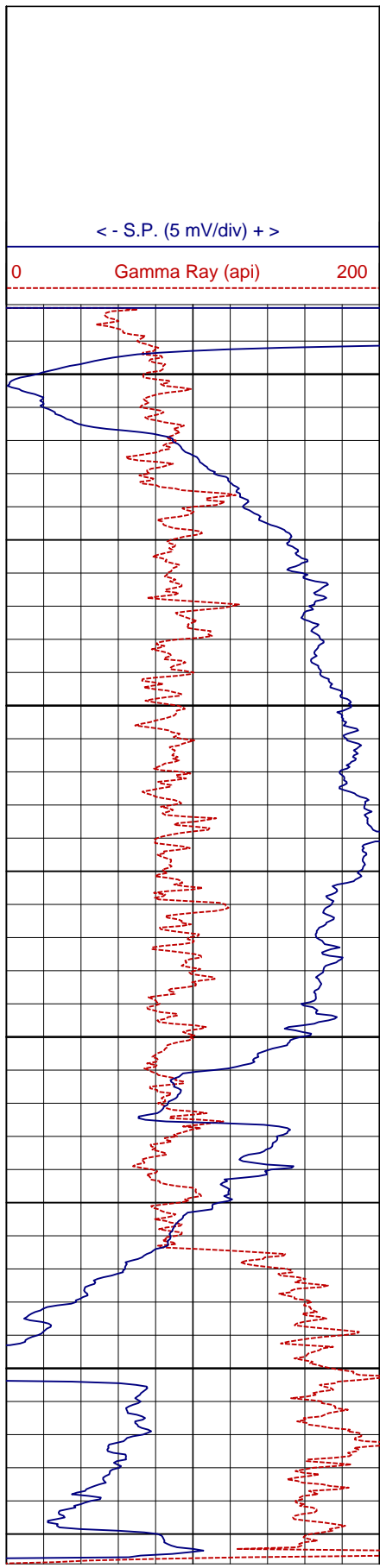
Miscellaneous Information

A recreational GPS accurate to +/- 45 feet set for Datum NAD27 was used to calculate Latitude, Longitude & Elevation values. The Section, Township, and Range then determined using the TRS program (TRS accuracy is not guaranteed). The TRS program converts Latitude and Longitude to Section, Township, and Range. The NOTICE at the bottom of this heading also applies.

Drilled By:

NOTICE

All interpretations are opinions based on inferences from electrical and other measurements and we do not guarantee the accuracy or correctness of any verbal or written interpretation, and we shall not, except in the case of gross or willful negligence on our part, be liable or responsible for any loss, costs, damages or expenses incurred or sustained by anyone resulting from any interpretation made by one of our officers, agents or employees. These interpretations are also subject to our General Terms and Conditions as set out in our current Price Schedule.
welenco, inc. August 08, 2007



DEPTHS

2 in/100ft

379
400
450
500
550
600
650
700
750

ELECTRIC - GAMMA RAY - TEMPERATURE LOG

0	64 Inch Normal (ohmmeter ² /m)	50	0	Single Point (ohms)	50
0	16 Inch Normal (ohmmeter ² /m)	50	72	Temperature (°F)	77

