

Job No. 13980  
 Company UNAVCO  
 Well B918  
 Field MOJAVE  
 County KERN State CA

Location:  
 CHINA LAKE:  
 MOUNTAIN SPRINGS CANYON RD  
 Sec. Twp. Rge. Other Services:  
 SONIC/CMDL  
 BHTV

Permanent Datum	G.L.	Elevation	Elevation
Log Measured From	TOP OF CSG 1	above perm. datum	K.B.
Drilling Measured From	TOC		D.F.
Date	06-16-08		G.L.
Run Number	ONE		
Depth Driller	710'		
Depth Logger	710'		
Bottom Logged Interval	710'		
Top Log Interval	397'		
Casing Driller	6 5/8" @ 397'		
Casing Logger	397'		
Bit Size	6"		
Type Fluid in Hole	WATER		
Density / Viscosity	N/A		
pH / Fluid Loss	N/A		
Source of Sample	TRUCK		
Rm @ Meas. Temp	17.6 @ 77F		
Rmf @ Meas. Temp	17.6 @ 77F		
Rmc @ Meas. Temp	N/A		
Source of Rmf / Rmc	MEAS		
Rm @ BHT	N/A		
Time Circulation Stopped	-		
Time Logger on Bottom	17:00		
Max. Recorded Temperature	N/A		
Equipment Number	PS-1		
Location	L.A.		
Recorded By	RIDDER		
Witnessed By	S. ALM		

<<< Fold Here >>>

All interpretations are opinions based on inferences from electrical or other measurements and we cannot and do not guarantee the accuracy or correctness of any interpretation, and we shall not, except in the case of gross or willful negligence on our part, be liable or responsible for any loss, costs, damages, or expenses incurred or sustained by anyone resulting from any interpretation made by any of our officers, agents or employees. These interpretations are also subject to our general terms and conditions set out in our current Price Schedule.

Comments

ELOG Calibration Report

Serial: D1  
 Model: DTQ  
 Shop Calibration Performed: Wed Nov 07 14:18:36 2007  
 Before Survey Verification Performed: Mon Aug 06 11:54:10 2007  
 After Survey Verification Performed: Mon Aug 06 11:54:38 2007

Shop Calibration

	Readings			References			Results	
	Zero	Cal		Zero	Cal		Gain	Offset
Short	9.827	101.502		10.200	102.200	Ohm-m	1.004	0.338
Long	10.276	100.223		10.200	102.200	Ohm-m	1.023	-19.747
IEE	26639.121	6352.306	counts	29.154	6.952	A		
VSN	2941.435	7193.907	counts	56.104	137.215	V		
VLN	0.000	1815.907	counts	0.000	34.636	V		

Before Survey Verification

	Readings			References			Results	
	Zero	Cal		Zero	Cal		Gain	Offset
Short	183.906	100.821		9.828	100.799	Ohm-m	-1.095	211.190
Long	422.542	101.924		101.776	101.776	Ohm-m	-0.317	134.130
IEE	59.028	6394.075	counts	0.065	6.998	A		
VSN	121.963	7242.794	counts	2.326	138.147	V		
VLN	70.056	1830.495	counts	1.336	34.914	V		

After Survey Verification

	Readings			References			Results	
	Zero	Cal		Zero	Cal		Gain	Offset
Short	117.548	100.824		183.906	100.821	Ohm-m	4.968	-400.076
Long	271.705	101.931		101.924	101.924	Ohm-m	1.888	-90.571
IEE	92.849	6387.565	counts	0.102	6.991	A		
VSN	122.623	7235.648	counts	2.339	138.011	V		
VLN	70.858	1828.759	counts	1.352	34.881	V		

After Survey Verification compared to Before Survey Calibration

	Zero			Cal		
	Before	After		Before	After	
Short	9.828	183.906	Ohm-m	100.799	100.821	Ohm-m
Long	0.000	422.542	Ohm-m	101.776	101.924	Ohm-m

Gamma Ray Calibration Report

Serial Number: D1  
 Tool Model: ELOG  
 Performed: Wed Nov 07 14:18:05 2007

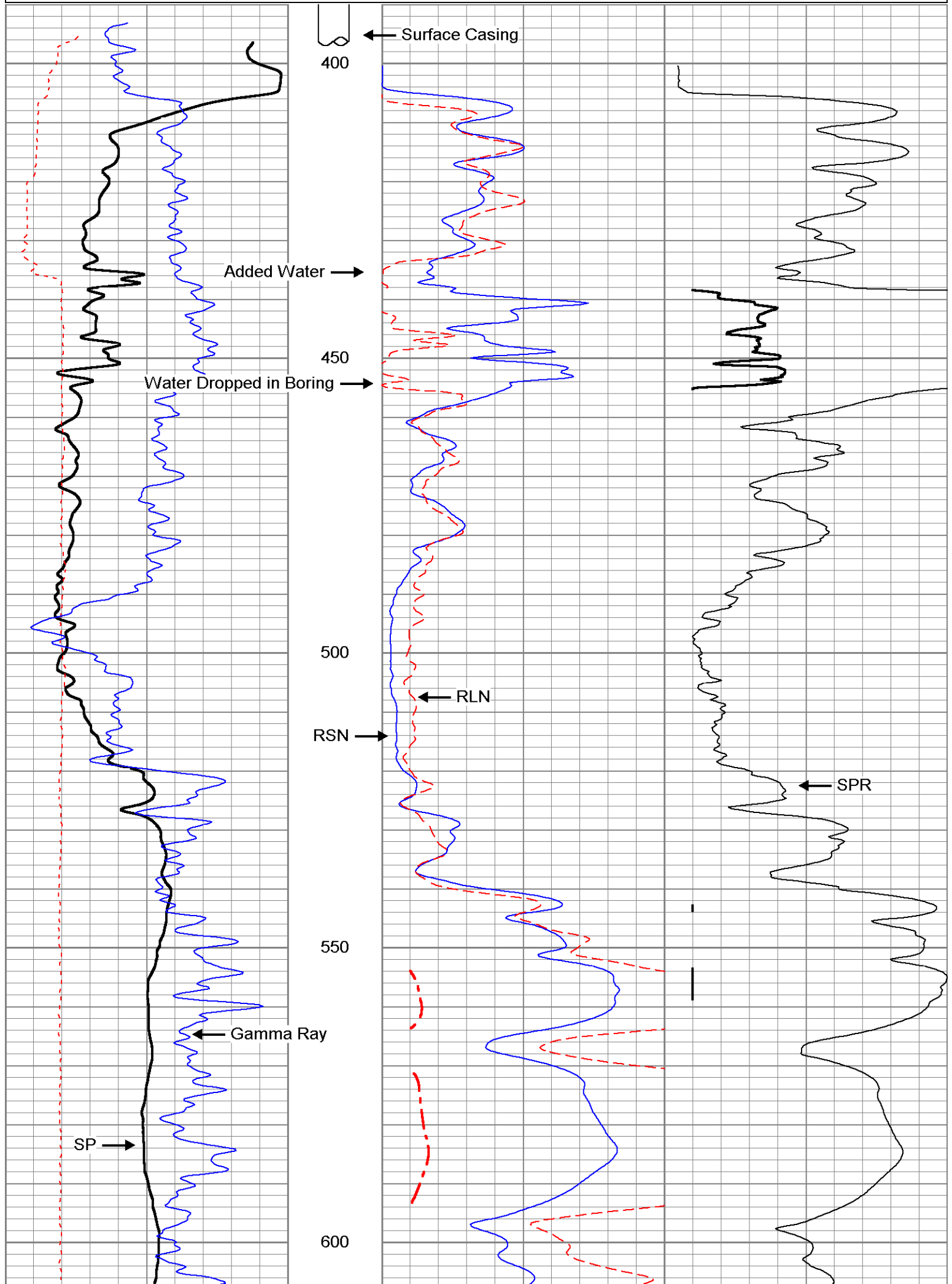
Calibrator Value: 162 GAPI

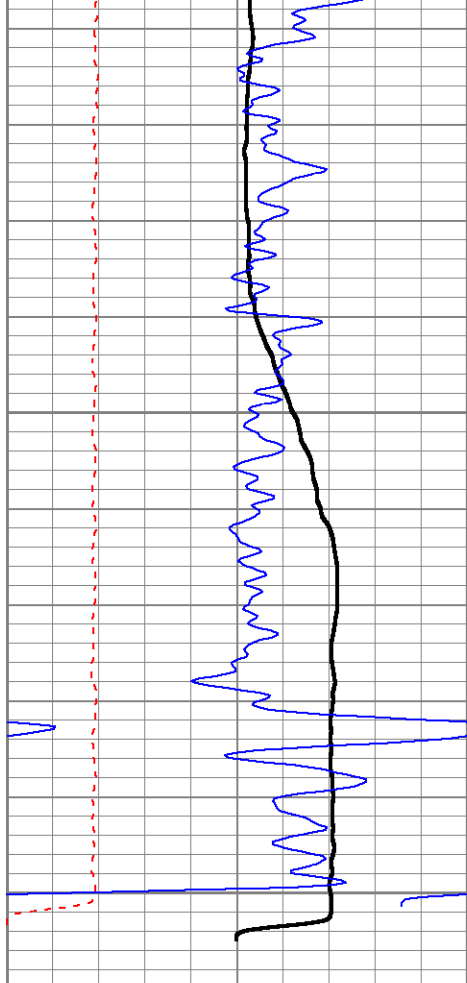
Background Reading: 179.605 cps  
 Calibrator Reading: 760.642 cps

Sensitivity: 0.278813 GAPI/cps

Database File: 13980.db  
 Dataset Pathname: Unavco/well/run1/eelog  
 Presentation Format: ELOG  
 Dataset Creation: Tue Jun 17 16:57:13 2008 by Log Warrior Version 6.6  
 Charted by: Depth in Feet scaled 1:240

-200	SP (mV)	200	0	RSN (Ohm-m)	2000	0	SPR (Ohm-m)	1000
0	Line Speed (ft/min)	100	0	RLN (Ohm-m)	2000		1000SPR back-up (Ohm-m)	0000
10	GR (GAPI)	80		200CRSN back-up (Ohm-m)	0000			
				2000RLN back-up (Ohm-m)	0000			

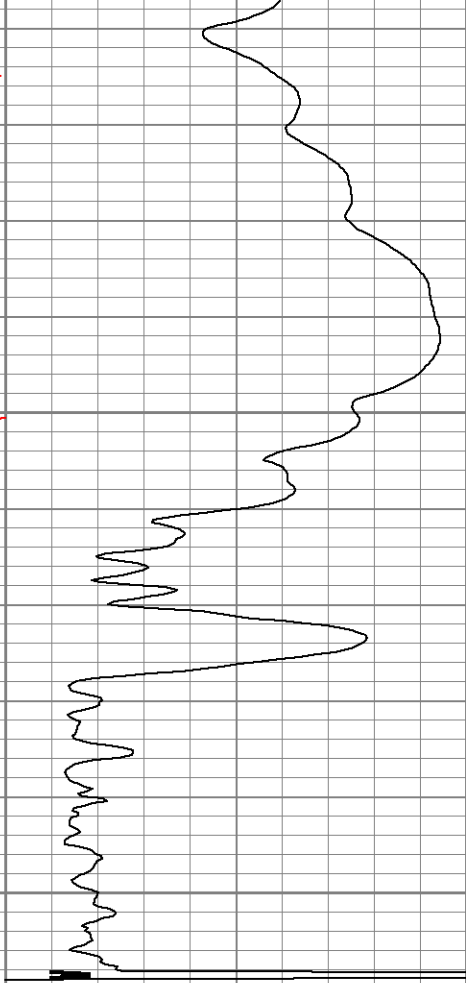




-200	SP (mV)	200
0	Line Speed (ft/min)	100
10	GR (GAPI)	80



0	RSN (Ohm-m)	2000
0	RLN (Ohm-m)	2000
	200CRSN back-up (Ohm-m)	0000
	200CRLN back-up (Ohm-m)	0000



0	SPR (Ohm-m)	1000
	1000SPR back-up (Ohm-m)	0000