



5201 Woodmere Drive, Bakersfield, CA 93313-- www.welenco.com--(800) 445-9914
California Contractor's License No. 722373

ELECTRIC - GAMMA - TEMP - CALIPER LOG

FILING NO.	COMPANY <u>Unavco</u>	
	WELL <u>B919</u>	
	FIELD <u>China Lake NWS</u>	
	STATE <u>California</u>	COUNTY <u>Kern</u>
JOB NO. 8810	LOCATION: <u>Lone View Area</u>	OTHER SERVICES: <u>Sonic</u> <u>Hirat</u>
	SEC: <u>24</u> TWP: <u>26S</u> RGE: <u>40E</u> LAT.: <u>35° 39' 47.0"</u> LONG.: <u>117° 37' 6.1"</u> MERIDIAN.: <u>Mt. Diablo</u>	

Permanent Datum: Ground Level, Elev. _____ Ft. Elev.: K.B. _____ Ft.
 Log Measured From: Ground Level, 0 Ft. Above Perm. Datum D.F. _____ Ft.
 Drilling Measured From: Ground Level G.L. _____ Ft.

Run	Elog		Caliper						
Date	<u>Feb. 14, 2008</u>		<u>Feb. 14, 2008</u>						
Depth-Driller	<u>500</u>	Ft	<u>500</u>	Ft		Ft		Ft	
Depth-Logger	<u>500</u>	Ft	<u>500</u>	Ft		Ft		Ft	
Top Logged Interval	<u>5</u>	Ft	<u>5</u>	Ft		Ft		Ft	
Btm. Logged Interval	<u>500</u>	Ft	<u>500</u>	Ft		Ft		Ft	
Casing-Driller		In @ <u>8</u>	Ft		In @	Ft		In @	Ft
Casing-Logger		In @ <u>8</u>	Ft		In @	Ft		In @	Ft
Bit Size	<u>8</u>	In	<u>8</u>	In		In		In	
Time On Bottom	<u>7:46</u>		<u>8:10</u>						
Type Fluid In Hole	<u>Water</u>								
Density	Viscosity								
pH	Fluid Loss			ml		ml		ml	
Source of Sample									
Rm @ Measured Temp.		@	°F		@	°F		@	°F
Rmf @ Measured Temp.		@	°F		@	°F		@	°F
Rmc @ Measured Temp.		@	°F		@	°F		@	°F
Source Rmf	Rmc								
Rm @ BHT		@	°F		@	°F		@	°F
Time Since Circulation	<u>8+</u>	Hr		Hr		Hr		Hr	
Max. Rec. Temp.			°F			°F		°F	
Van No.	Location	<u>L-23</u>	<u>Bfld</u>						
Recorded By	<u>Craig Corbell</u>								
Witnessed By									

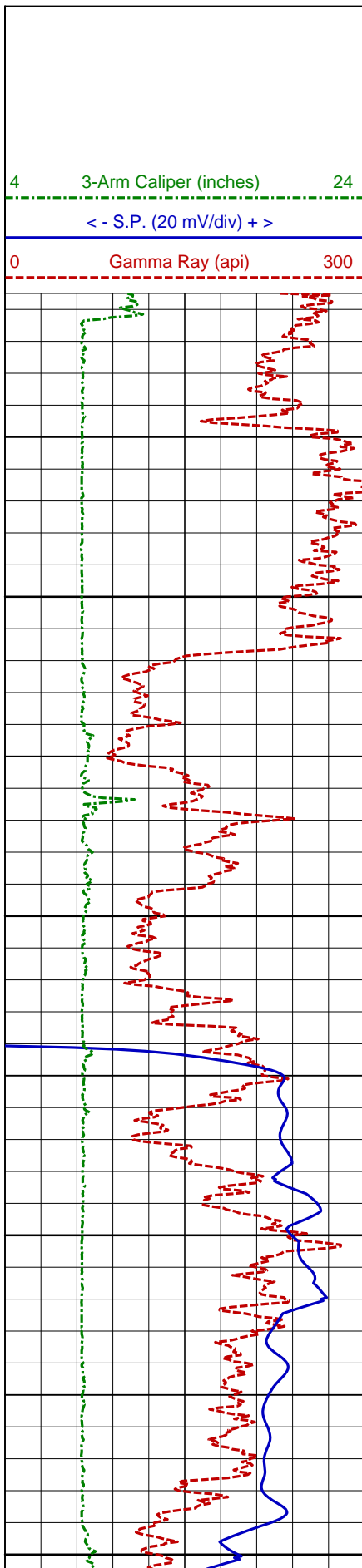
Miscellaneous Information

A recreational GPS accurate to +/- 45 feet set for Datum NAD27 was used to calculate Latitude, Longitude & Elevation values. The Section, Township, and Range then determined using the TRS program (TRS accuracy is not guaranteed). The TRS program converts Latitude and Longitude to Section, Township, and Range. The NOTICE at the bottom of this heading also applies.

Drilled By: PC Expl.

NOTICE

All interpretations are opinions based on inferences from electrical and other measurements and we do not guarantee the accuracy or correctness of any verbal or written interpretation, and we shall not, except in the case of gross or willful negligence on our part, be liable or responsible for any loss, costs, damages or expenses incurred or sustained by anyone resulting from any interpretation made by one of our officers, agents or employees. These interpretations are also subject to our General Terms and Conditions as set out in our current Price Schedule.
welenco, inc. February 14, 2008



DEPTHS

2 in/100ft

5

50

100

150

200

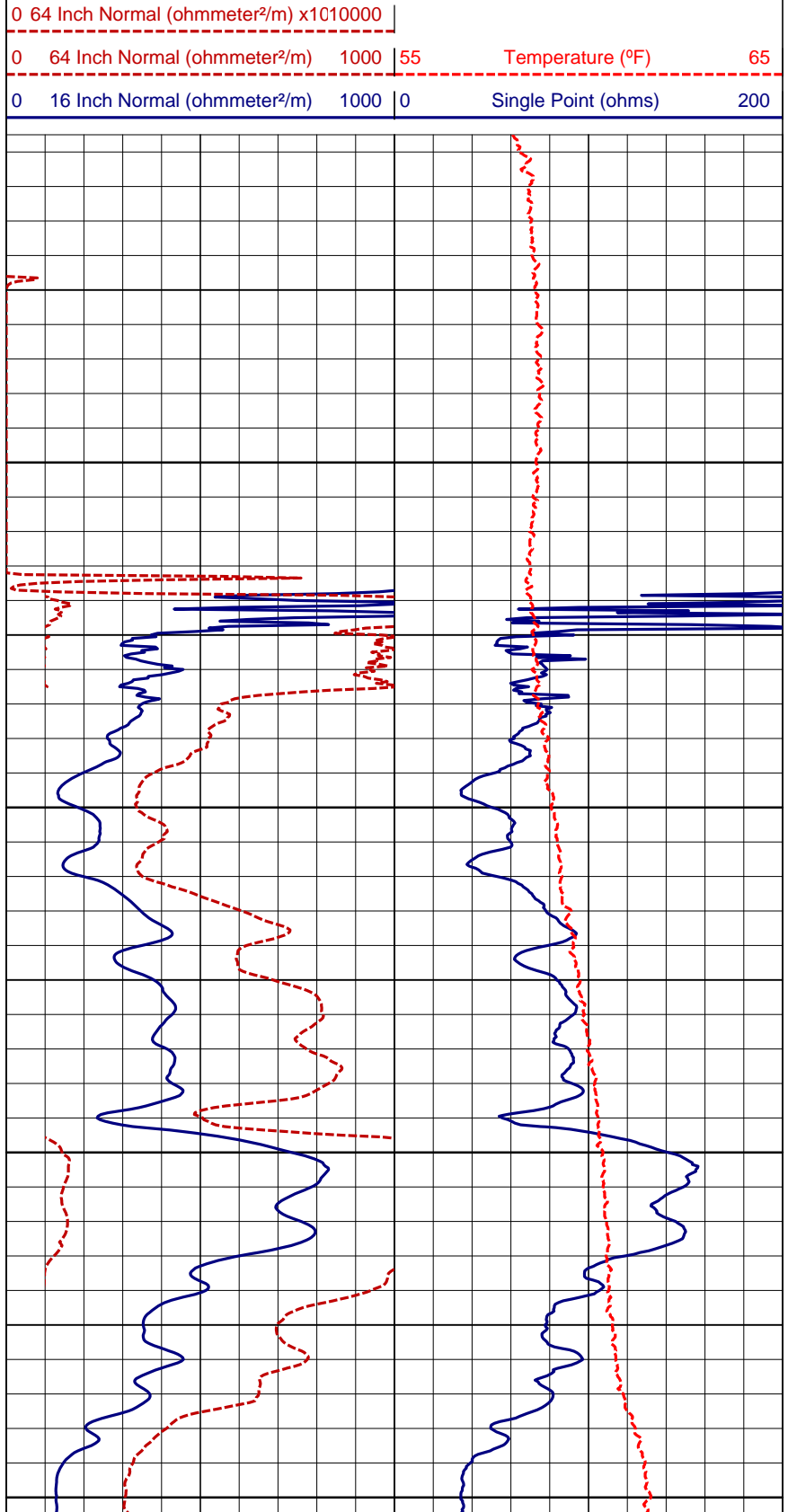
250

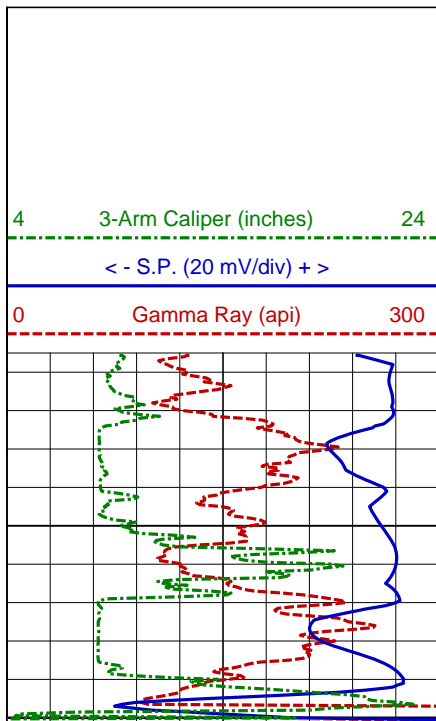
300

350

400

ELECTRIC - GAMMA - TEMP - CALIPER LOG





Log Page No. 2 of 2 Pages

DEPTHS

2 in/100ft

450

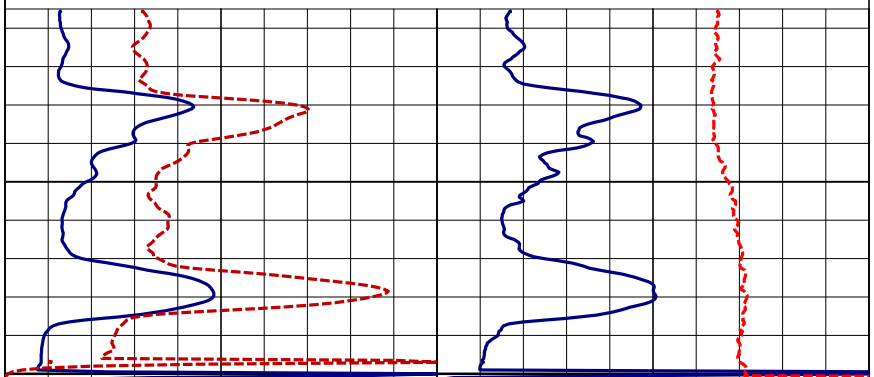
500

ELECTRIC - GAMMA - TEMP - CALIPER LOG

0 64 Inch Normal (ohmmeter²/m) x1010000

0 64 Inch Normal (ohmmeter²/m) 1000 55 Temperature (°F) 65

0 16 Inch Normal (ohmmeter²/m) 1000 0 Single Point (ohms) 200



Page Length: 405 - 501 Feet (96 Feet)

Time: 08:43:41 AM

Date: Feb 14, 2008