



5201 Woodmere Drive, Bakersfield, CA 93313-- www.welenco.com--(800) 445-9914
California Contractor's License No. 722373

3-ARM CALIPER LOG

FILING NO.	COMPANY <u>UNAVCO</u>	OTHER SERVICES: Sonic BHTV ELOG
	WELL <u>B-921</u>	
	FIELD <u>Ridgecrest</u>	
	STATE <u>California</u> COUNTY <u>San Bernardino</u>	
JOB NO. 9305	LOCATION: Randsburg Wash Road	SEC: <u>16</u> TWP: <u>27S</u> RGE: <u>42E</u> LAT.: <u>35° 35' 11.0"</u> LONG.: <u>117° 27' 41.0"</u> MERIDIAN.: <u>Mt. Diablo</u>

Permanent Datum: **Ground Level**, Elev. **2330** Ft. Elev.: K.B. _____ Ft.
 Log Measured From: **Ground Level**, **0** Ft. Above Perm. Datum D.F. _____ Ft.
 Drilling Measured From: **Ground Level** G.L. **2330** Ft.

Date	May. 19, 2008		
Type Of Log	Caliper		
Run	One		
Depth-Driller	618 Ft	Ft	Ft
Depth-Logger	616 Ft	Ft	Ft
Top Logged Interval	0 Ft	Ft	Ft
Btm. Logged Interval	615 Ft	Ft	Ft
Type Fluid In Hole	Water		
Fluid Level	N/A Ft	Ft	Ft
Max Temp	86.8 °F	°F	°F
Operating Rig Time	.75 Hr	Hr	Hr
Van No.	Location	LV-1	Bfld
Recorded By	Dan Ihde		
Witnessed By	Liz Van Boskirk		

RUN NO.	BOREHOLE RECORD			CASING RECORD			
	BIT	FROM	TO	SIZE	TYPE	FROM	TO
1	6 In	192 Ft	618 Ft	8.625 In	Steel	0 Ft	192 Ft
2	In	Ft	Ft	6.0 In	Steel	0 Ft	187 Ft
3	In	Ft	Ft	In		Ft	Ft

Miscellaneous Information

Remarks:

A recreational GPS accurate to +/- 45 feet set for Datum NAD27 was used to calculate Latitude, Longitude & Elevation values. The Section, Township, and Range then determined using the TRS program (TRS accuracy is not guaranteed). The TRS program converts Latitude and Longitude to Section, Township, and Range. The NOTICE at the bottom of this heading also applies.
Hole filled with water prior to logging runs.
Hole cemented up and drilled out prior to logging.

Drilled By: Steves Pump and Well Drilling

Perforated Intervals:

Line Speed:

Borehole Volume Calculations:

Other Information:

NOTICE: All interpretations are opinions based on inferences from electrical and other measurements and we do not guarantee the accuracy or correctness of any verbal or written interpretation, and we shall not, except in the case of gross or willful negligence on our part, be liable or responsible for any loss, costs, damages or expenses incurred or sustained by anyone resulting from any interpretation made by one of our officers, agents or employees. These interpretations are also subject to our General Terms and Conditions as set out in our current Price Schedule.
welenco, inc. May 19, 2008

3-ARM CALIPER LOG

DEPTHS

5 in/100ft

4

3-Arm Caliper (inches)

14

0

50

100

150

3-ARM CALIPER LOG

DEPTHS

5 in/100ft

4

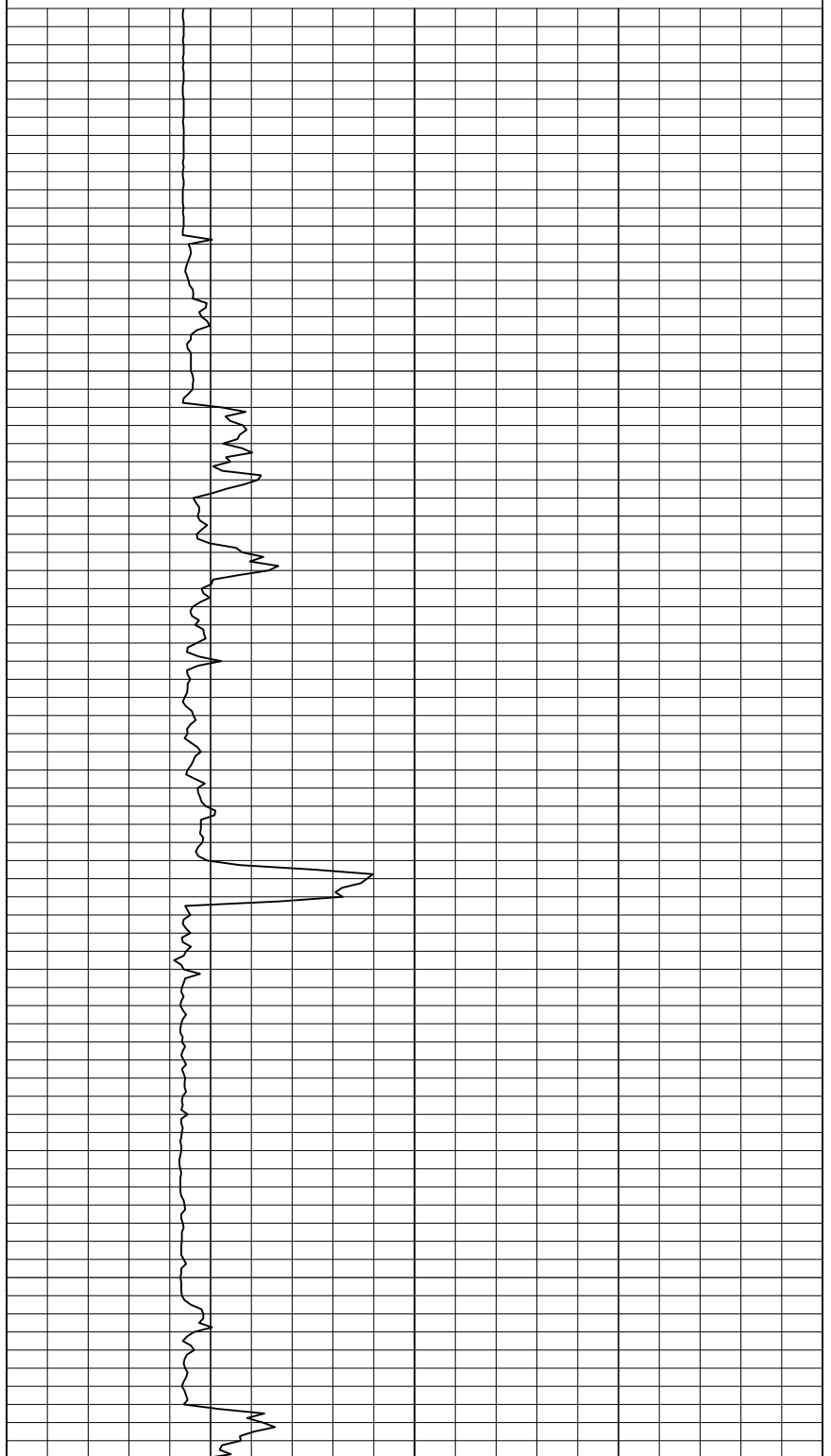
3-Arm Caliper (inches)

14

200

250

300



3-ARM CALIPER LOG

DEPTHS

5 in/100ft

4

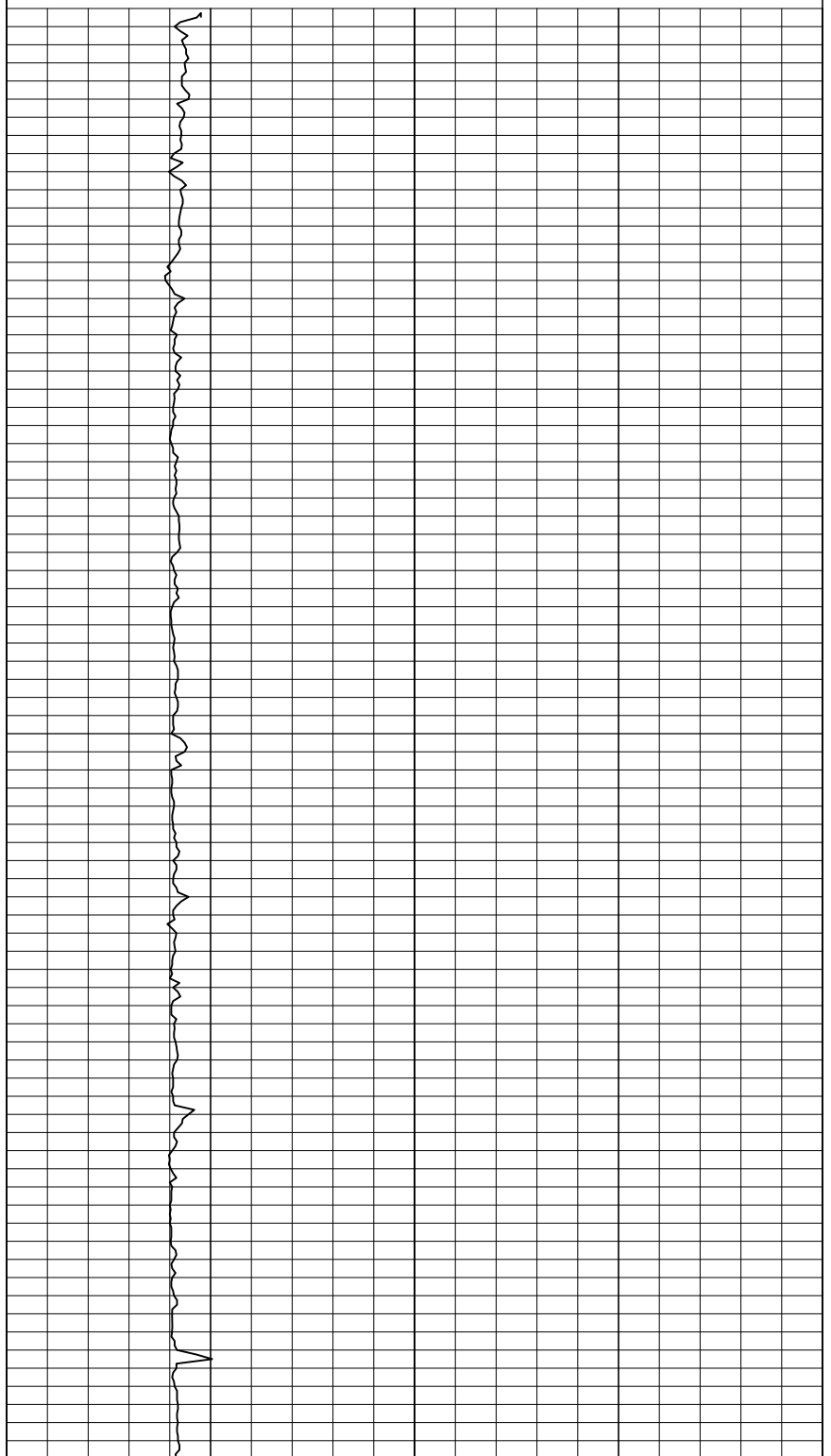
3-Arm Caliper (inches)

14

350

400

450



3-ARM CALIPER LOG

DEPTHS

5 in/100ft

4

3-Arm Caliper (inches)

14

500

550

600

