



5201 Woodmere Drive, Bakersfield, CA 93313-- www.welenco.com--(800) 445-9914
California Contractor's License No. 722373

ELECTRIC - GAMMA RAY - TEMPERATURE LOG

FILING NO.	COMPANY <u>UNAVCO</u>		
	WELL <u>B-921</u>		
	FIELD <u>Ridgecrest</u>		
	STATE <u>California</u>	COUNTY <u>San Bernardino</u>	
	LOCATION: <u>Randsburg Wash Road</u>		OTHER SERVICES: <u>Sonic BHTV Caliper</u>
JOB NO. 9305	SEC: <u>16</u> TWP: <u>27S</u> RGE: <u>42E</u> LAT.: <u>35° 35' 11.0"</u> LONG.: <u>117° 27' 41.0"</u> MERIDIAN.: <u>Mt. Diablo</u>		

Permanent Datum: Ground Level, Elev. 2330 Ft. Elev.: K.B. _____ Ft.
 Log Measured From: Ground Level, 0 Ft. Above Perm. Datum D.F. _____ Ft.
 Drilling Measured From: Ground Level G.L. 2330 Ft.

Run	<u>One</u>							
Date	<u>May. 19, 2008</u>							
Depth-Driller	<u>618</u>	Ft		Ft		Ft	Ft	
Depth-Logger	<u>616</u>	Ft		Ft		Ft	Ft	
Top Logged Interval	<u>100</u>	Ft		Ft		Ft	Ft	
Btm. Logged Interval	<u>615</u>	Ft		Ft		Ft	Ft	
Casing-Driller	<u>8.625 In @ 192</u>	Ft	<u>6.625 In @ 187</u>	Ft	<u>In @</u>	Ft	<u>In @</u>	Ft
Casing-Logger	<u>8.625 In @ 192</u>	Ft	<u>6.625 In @ 187</u>	Ft	<u>In @</u>	Ft	<u>In @</u>	Ft
Bit Size	<u>6</u>	In		In		In	In	
Time On Bottom	<u>9:50 AM</u>							
Type Fluid In Hole	<u>Water</u>							
Density	Viscosity							
pH	Fluid Loss							
		ml		ml		ml	ml	
Source of Sample	<u>Tank</u>							
Rm @ Measured Temp.	<u>10.0</u>	@	<u>75</u>	°F	@	°F	@	°F
Rmf @ Measured Temp.	<u>10.0</u>	@	<u>75</u>	°F	@	°F	@	°F
Rmc @ Measured Temp.		@		°F	@	°F	@	°F
Source Rmf	Rmc							
	<u>meas</u>							
Rm @ BHT		@		°F	@	°F	@	°F
Time Since Circulation	<u>N/A</u>	Hr		Hr		Hr	Hr	
Max. Rec. Temp.	<u>86.8</u>			°F		°F	°F	
Van No.	Location	<u>LV-1</u>	<u>Bfld</u>					
Recorded By	<u>Dan Ihde</u>							
Witnessed By	<u>Liz Van Boskirk</u>							

Miscellaneous Information

A recreational GPS accurate to +/- 45 feet set for Datum NAD27 was used to calculate Latitude, Longitude & Elevation values. The Section, Township, and Range then determined using the TRS program (TRS accuracy is not guaranteed). The TRS program converts Latitude and Longitude to Section, Township, and Range. The NOTICE at the bottom of this heading also applies.
Hole filled with water prior to logging runs.
Hole cemeted up and drilled out prior to logging.

Drilled By: Steves Pump and Well Drilling

NOTICE

All interpretations are opinions based on inferences from electrical and other measurements and we do not guarantee the accuracy or correctness of any verbal or written interpretation, and we shall not, except in the case of gross or willful negligence on our part, be liable or responsible for any loss, costs, damages or expenses incurred or sustained by anyone resulting from any interpretation made by one of our officers, agents or employees. These interpretations are also subject to our General Terms and Conditions as set out in our current Price Schedule.
welenco, inc. May 19, 2008

ELECTRIC - GAMMA RAY - TEMPERATURE LOG

DEPTHS

5 in/100ft

< - S.P. (10 mV/div) + >

0 64 Inch Normal (ohmmeter²/m) x10 5000

0 64 Inch Normal (ohmmeter²/m) 500

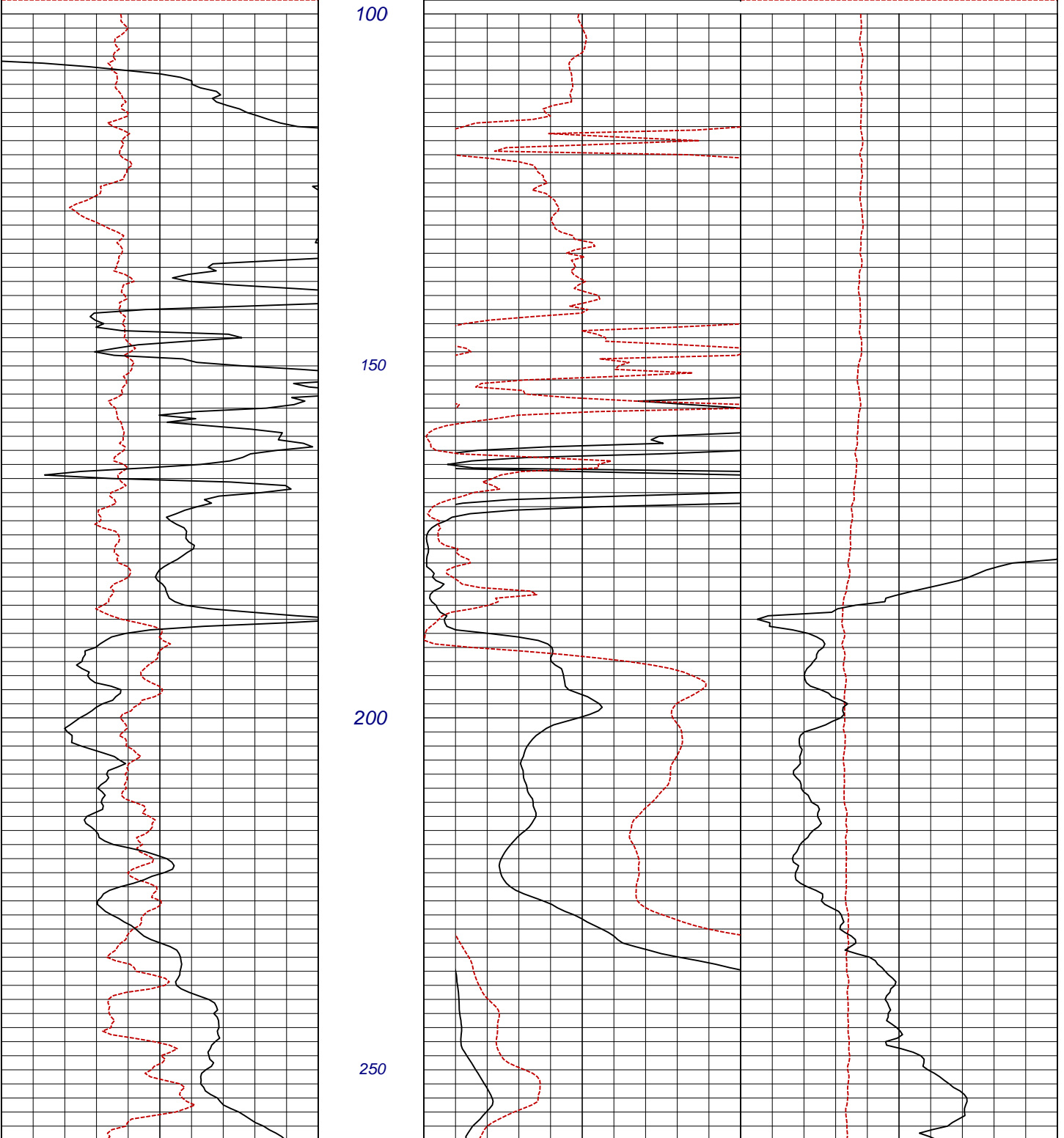
0 16 Inch Normal (ohmmeter²/m) x10 5000

0 Single Point (ohms) 350

0 16 Inch Normal (ohmmeter²/m) 500

77 Temperature (°F) 87

0 Gamma Ray (api) 300



ELECTRIC - GAMMA RAY - TEMPERATURE LOG

DEPTHS

5 in/100ft

< - S.P. (10 mV/div) + >

0 64 Inch Normal (ohmmeter²/m) x10 5000

0 64 Inch Normal (ohmmeter²/m) 500

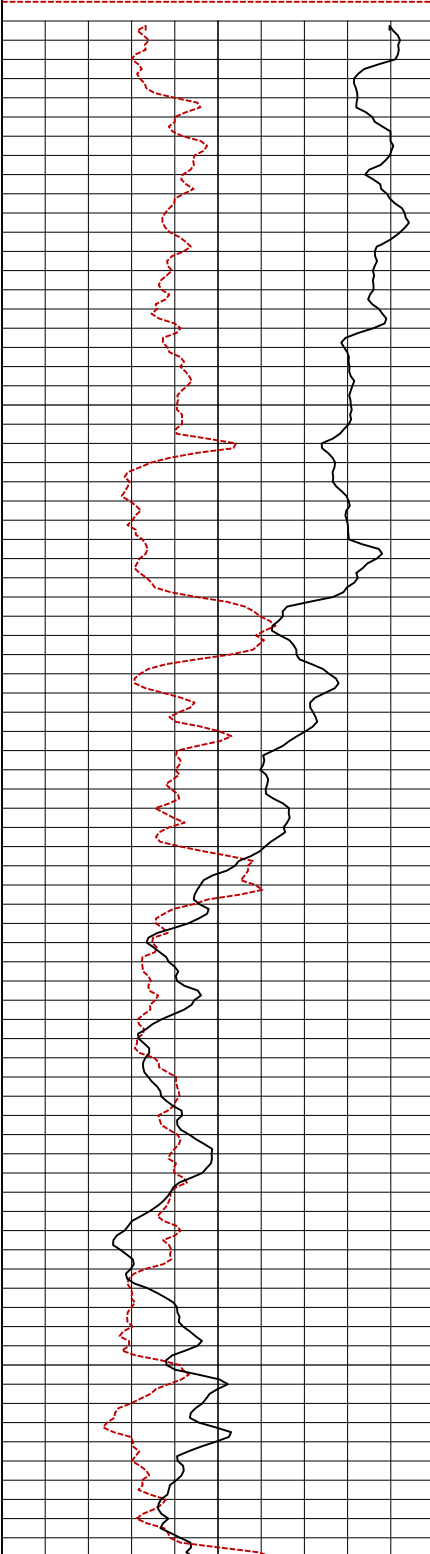
0 16 Inch Normal (ohmmeter²/m) x10 5000

0 Single Point (ohms) 350

0 16 Inch Normal (ohmmeter²/m) 500

77 Temperature (°F) 87

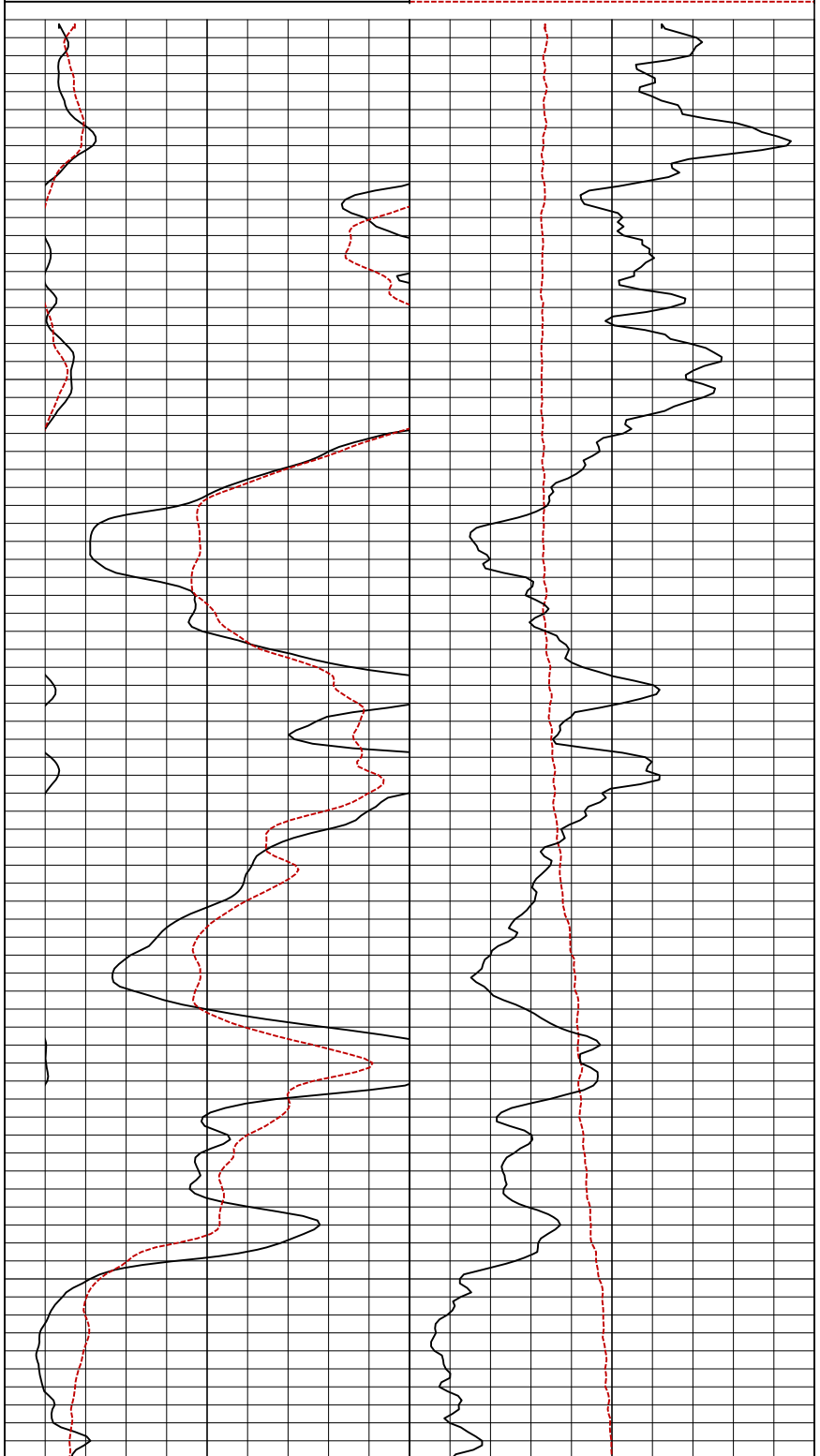
0 Gamma Ray (api) 300



300

350

400



ELECTRIC - GAMMA RAY - TEMPERATURE LOG

DEPTHS

5 in/100ft

< - S.P. (10 mV/div) + >

0 64 Inch Normal (ohmmeter²/m) x10 5000

0 64 Inch Normal (ohmmeter²/m) 500

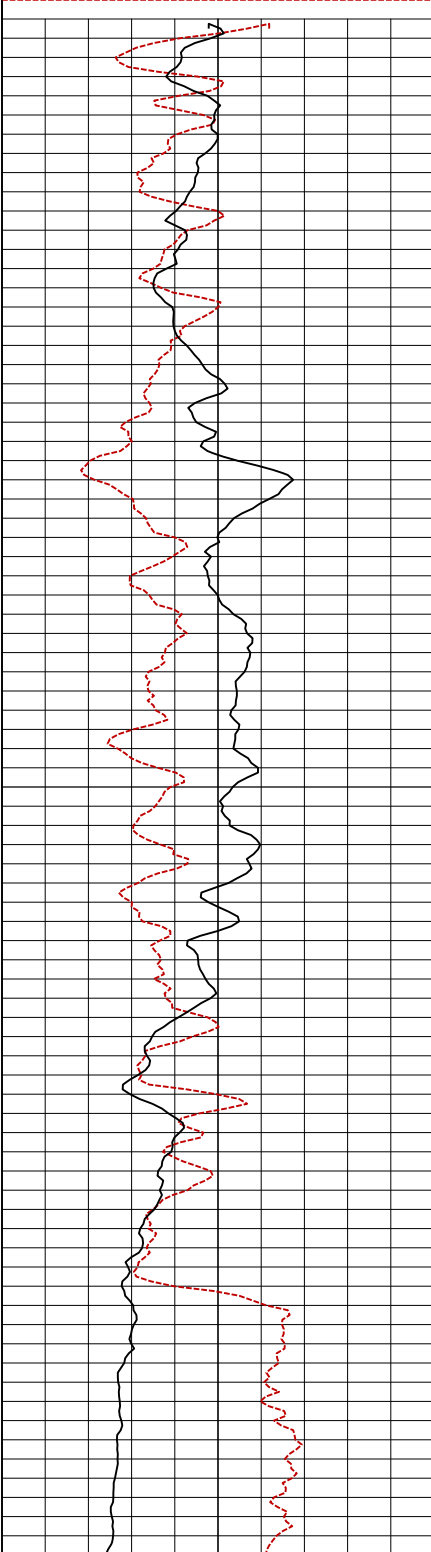
0 16 Inch Normal (ohmmeter²/m) x10 5000

0 Single Point (ohms) 350

0 Gamma Ray (api) 300

0 16 Inch Normal (ohmmeter²/m) 500

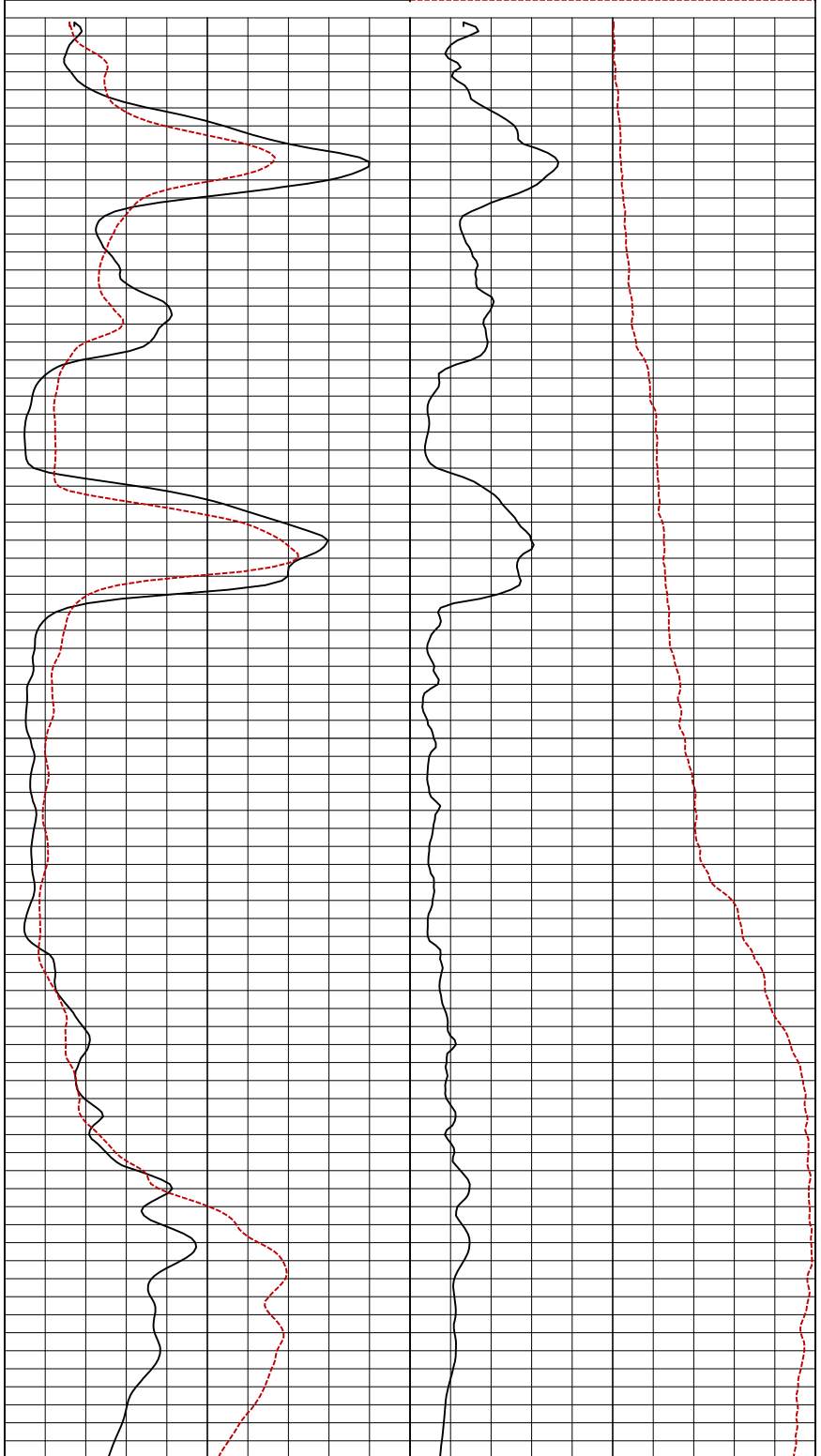
77 Temperature (°F) 87

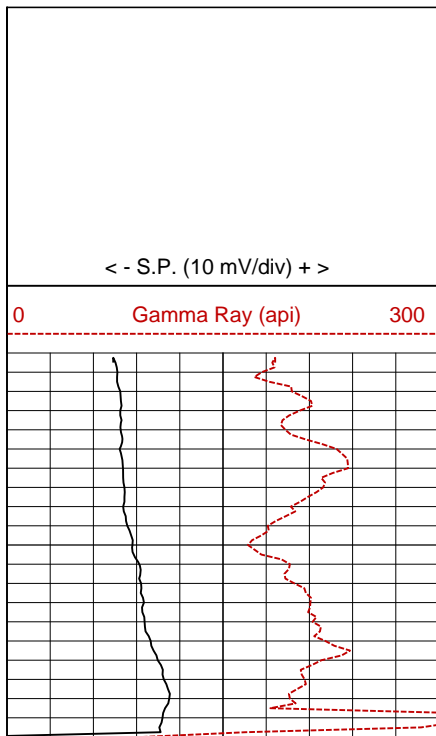


450

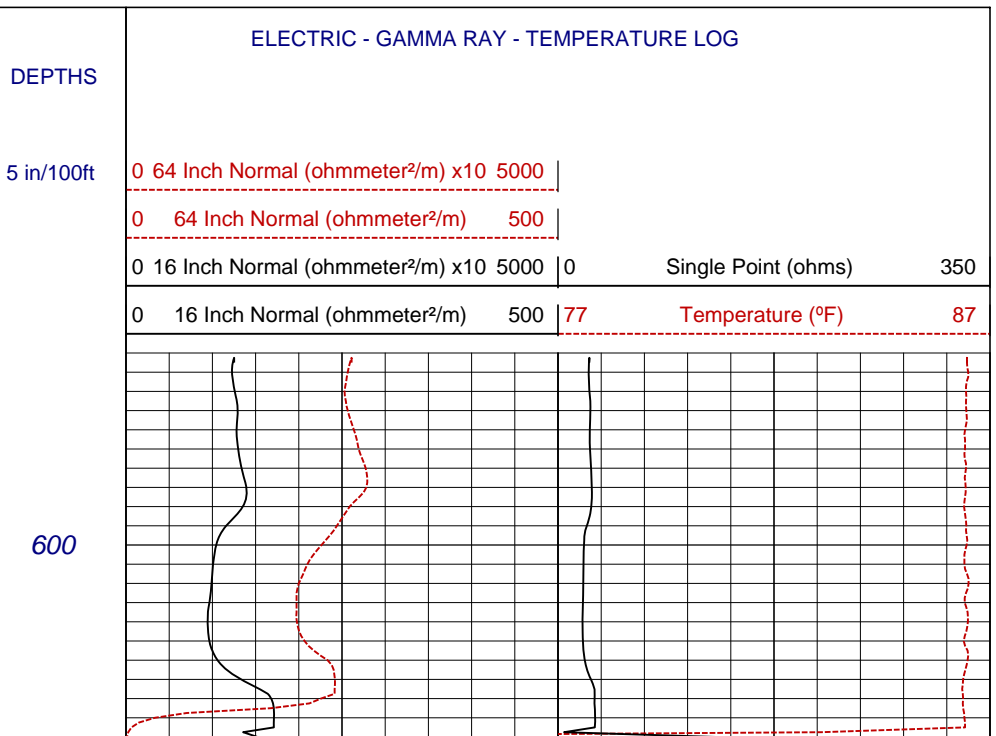
500

550





Log Page No. 4 of 4 Pages



Page Length: 580 - 620 Feet (40 Feet)

Time: 01:48:39 PM

Date: May 19, 2008