



5201 Woodmere Drive, Bakersfield, CA 93313-- www.welenco.com--(800) 445-9914
 California Contractor's License No. 722373

FULL WAVEFORM SONIC - VDL LOG

FILING NO.	COMPANY <u>UNAVCO</u>		
	WELL <u>China Lake NWC B-917</u>		
	FIELD <u>Ridgecrest</u>		
	STATE <u>California</u>	COUNTY <u>San Bernardino</u>	
	LOCATION: <u>China Lake NWC South Range</u>		OTHER SERVICES: <u>EL-GR</u> <u>HIRAT</u> <u>CALIPER</u>
JOB NO. 8740	SEC: <u>15</u> TWP: <u>29S</u> RGE: <u>44E</u> LAT.: <u>35° 24' 19.5"</u> LONG.: <u>117° 15' 28.3"</u> MERIDIAN.: <u>Mt. Diablo</u>		

Permanent Datum: Top of Casing, Elev. 3900 Ft. Elev.: K.B. _____ Ft.
 Log Measured From: Top of Casing, 0 Ft. Above Perm. Datum D.F. _____ Ft.
 Drilling Measured From: Ground Level G.L. 3900 Ft.

Run	One						
Date	Jun. 26, 2008						
Depth-Driller	800	Ft		Ft		Ft	Ft
Depth-Logger	795	Ft		Ft		Ft	Ft
Top Logged Interval	400	Ft		Ft		Ft	Ft
Btm. Logged Interval	795	Ft		Ft		Ft	Ft
Casing-Driller	6	In @ 410	Ft	In @	Ft	In @	Ft
Casing-Logger	6	In @ 410	Ft	In @	Ft	In @	Ft
Bit Size	6	In		In		In	In
Time On Bottom	1000						
Type Fluid In Hole	Water						
Density	Viscosity						
pH	Fluid Loss						
			ml		ml		ml
Source of Sample	PIT						
Rm @ Measured Temp.	10.4	@ 75	°F	@	°F	@	°F
Rmf @ Measured Temp.	8.3	@ 75	°F	@	°F	@	°F
Rmc @ Measured Temp.		@	°F	@	°F	@	°F
Source Rmf	meas.						
Rm @ BHT		@	°F	@	°F	@	°F
Time Since Circulation			Hr		Hr		Hr
Max. Rec. Temp.			°F		°F		°F
Van No.	L-18	Location	SVG				
Recorded By	Mitch Tullis						
Witnessed By	Steve						

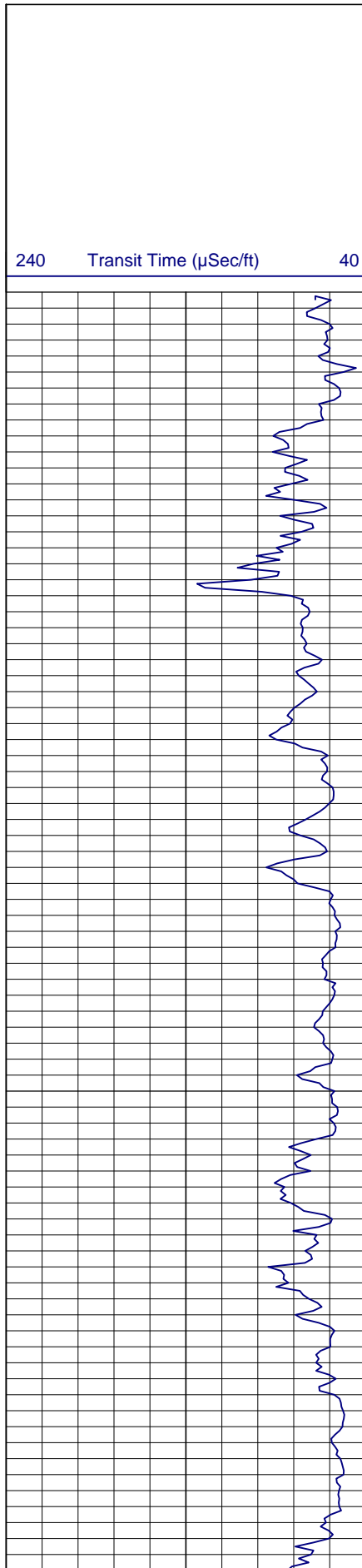
Miscellaneous Information

A recreational GPS accurate to +/- 45 feet set for Datum NAD27 was used to calculate Latitude, Longitude & Elevation values. The Section, Township, and Range then determined using the TRS program (TRS accuracy is not guaranteed). The TRS program converts Latitude and Longitude to Section, Township, and Range. The NOTICE at the bottom of this heading also applies.

Drilled By: Steve's Pump and Well Drilling

NOTICE

All interpretations are opinions based on inferences from electrical and other measurements and we do not guarantee the accuracy or correctness of any verbal or written interpretation, and we shall not, except in the case of gross or willful negligence on our part, be liable or responsible for any loss, costs, damages or expenses incurred or sustained by anyone resulting from any interpretation made by one of our officers, agents or employees. These interpretations are also subject to our General Terms and Conditions as set out in our current Price Schedule.
welenco, inc. June 26, 2008



DEPTHS

5 in/100ft

FULL WAVEFORM SONIC - VDL LOG

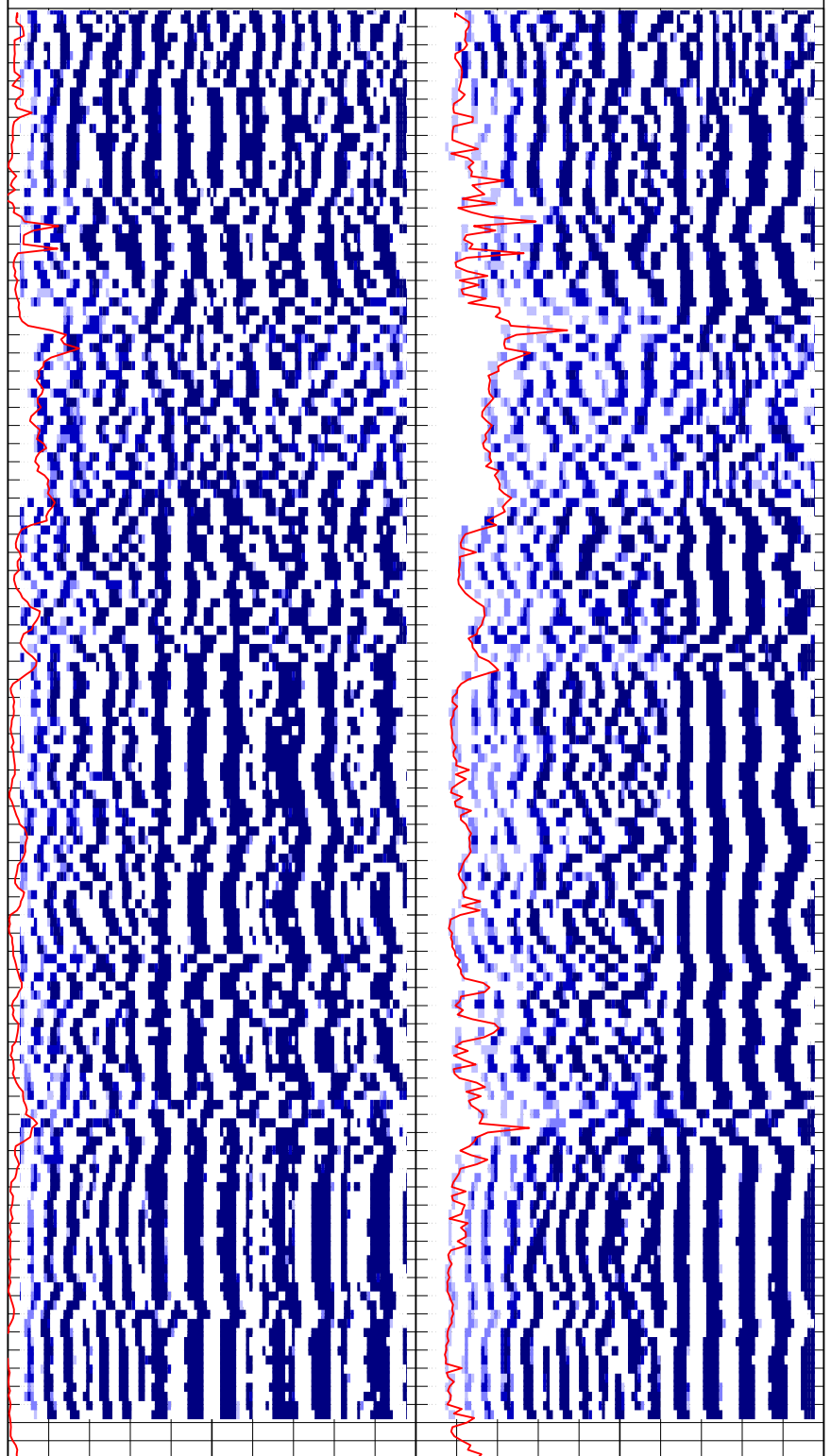
200	Near P Wave (µsecs)	1200	200	Far P Wave (µsecs)	1200
200	Near Variable Density (µsecs)	1200	200	Far Variable Density (µsecs)	1200

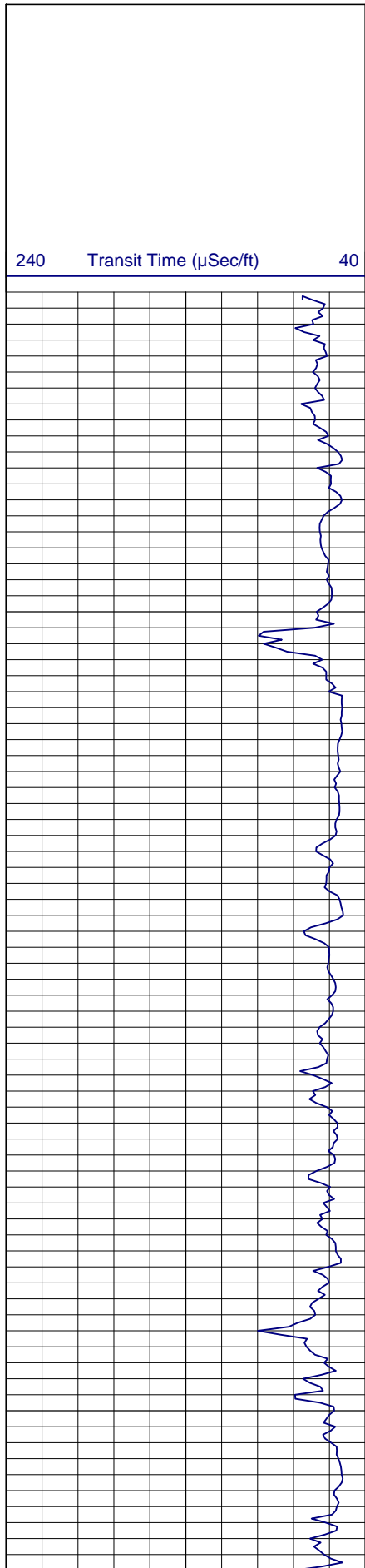
400

450

500

550





FULL WAVEFORM SONIC - VDL LOG

DEPTHS

5 in/100ft

200 Near P Wave (µsecs) 1200 200 Far P Wave (µsecs) 1200
200 Near Variable Density (µsecs) 1200 200 Far Variable Density (µsecs) 1200

600

650

700

