

## CALIPER BOREHOLE VOLUME

Job No. 13390	Company WDC EXPLORATION & WELLS
Well B-093	Field ANZA
County RIVERSIDE	State CA

Location: TRIPP FLATS STATION	Other Services: SONIC
Sec. Twp. Rge.	

Permanent Datum	G.L.	Elevation above perm. datum	Elevation K.B. D.F. G.L.
Log Measured From	G.L.	0'	
Drilling Measured From	G.L.		
Date	09-07-07		
Run Number	ONE		
Depth Driller	803'		
Depth Logger	802'		
Bottom Logged Interval	801'		
Top Log Interval	394.5'		
Casing Driller	8.625" @ 394.5'		
Casing Logger	394.5'		
Bit Size	6.125"		
Type Fluid in Hole	WATER		
Density / Viscosity	N/A		
pH / Fluid Loss	N/A		
Source of Sample	N/A		
Rm @ Meas. Temp	N/A		
Rmf @ Meas. Temp	N/A		
Rmc @ Meas. Temp	N/A		
Source of Rmf / Rmc	N/A		
Rm @ BHT	N/A		
Time Circulation Stopped	2 HOURS		
Time Logger on Bottom	5:00 PM		
Max. Recorded Temperature	N/A		
Equipment Number	PS-1		
Location	L.A.		
Recorded By	ABREAU		
Witnessed By	S. ALM		

<<< Fold Here >>>

All interpretations are opinions based on inferences from electrical or other measurements and we cannot and do not guarantee the accuracy or correctness of any interpretation, and we shall not, except in the case of gross or willful negligence on our part, be liable or responsible for any loss, costs, damages, or expenses incurred or sustained by anyone resulting from any interpretation made by any of our officers, agents or employees. These interpretations are also subject to our general terms and conditions set out in our current Price Schedule.

### Comments

### XY Caliper Calibration Report

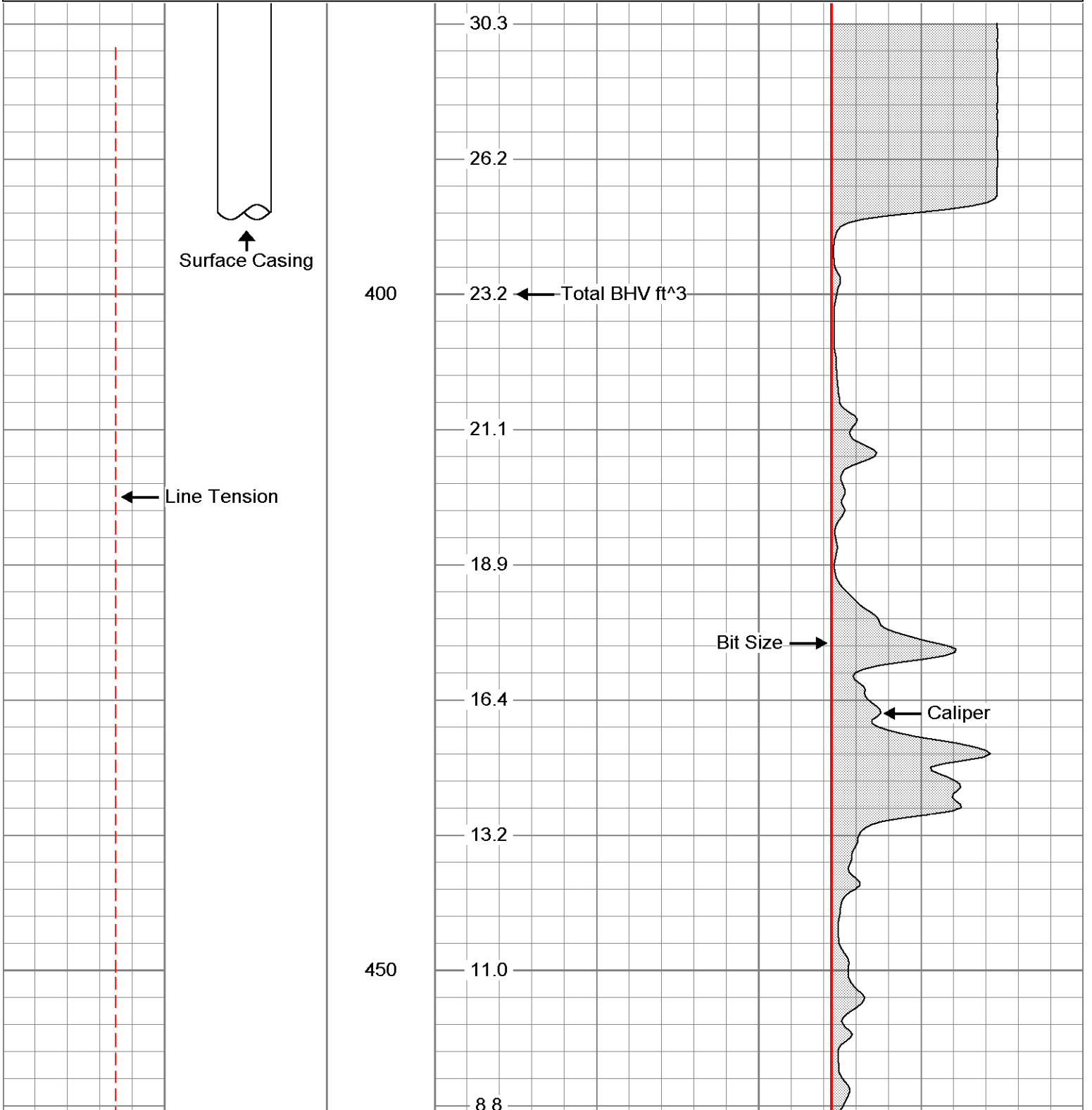
Serial Number: Short  
 Tool Model: Comprobe  
 Performed: Sat Jul 08 12:15:32 2006

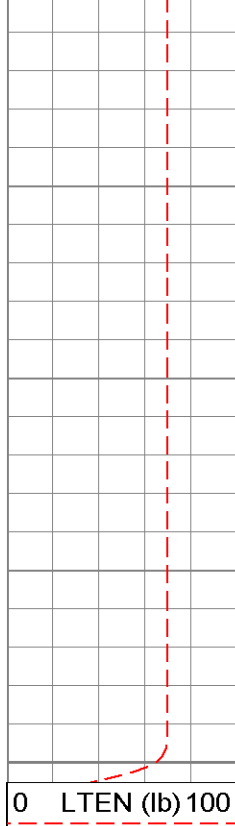
Small Ring: 10 in  
 Large Ring: 20 in

	X Caliper	Y Caliper	
Reading with Small Ring:	390.1	390.1	cps
Reading with Large Ring:	711.5	711.5	cps
Gain:	0.0311139	0.0311139	
Offset:	-1.33752	-1.33752	

Database File: 13390.db  
 Dataset Pathname: WDC/well/run1/cal.2  
 Presentation Format: XYC2  
 Dataset Creation: Fri Sep 07 18:08:16 2007 by Calc Warrior Version 6.6  
 Charted by: Depth in Feet scaled 1:120

0	LTEN (lb) 100	CSG SCHLD	0	Caliper (in)	10
0			0	BIT SIZE (in)	10

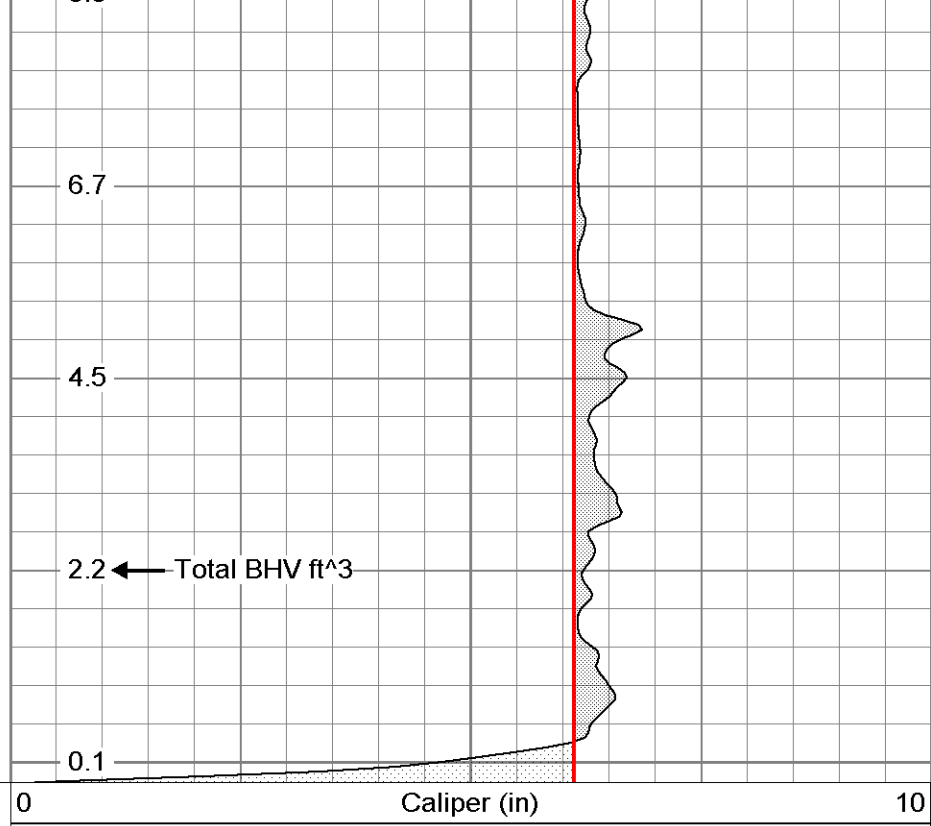




0 LTEN (lb) 100

CSG SCHLD

500



0 Caliper (in) 10

0 BIT SIZE (in) 10

2.2 ← Total BHV ft<sup>3</sup>