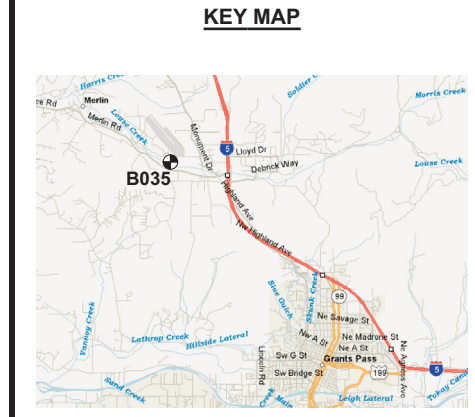
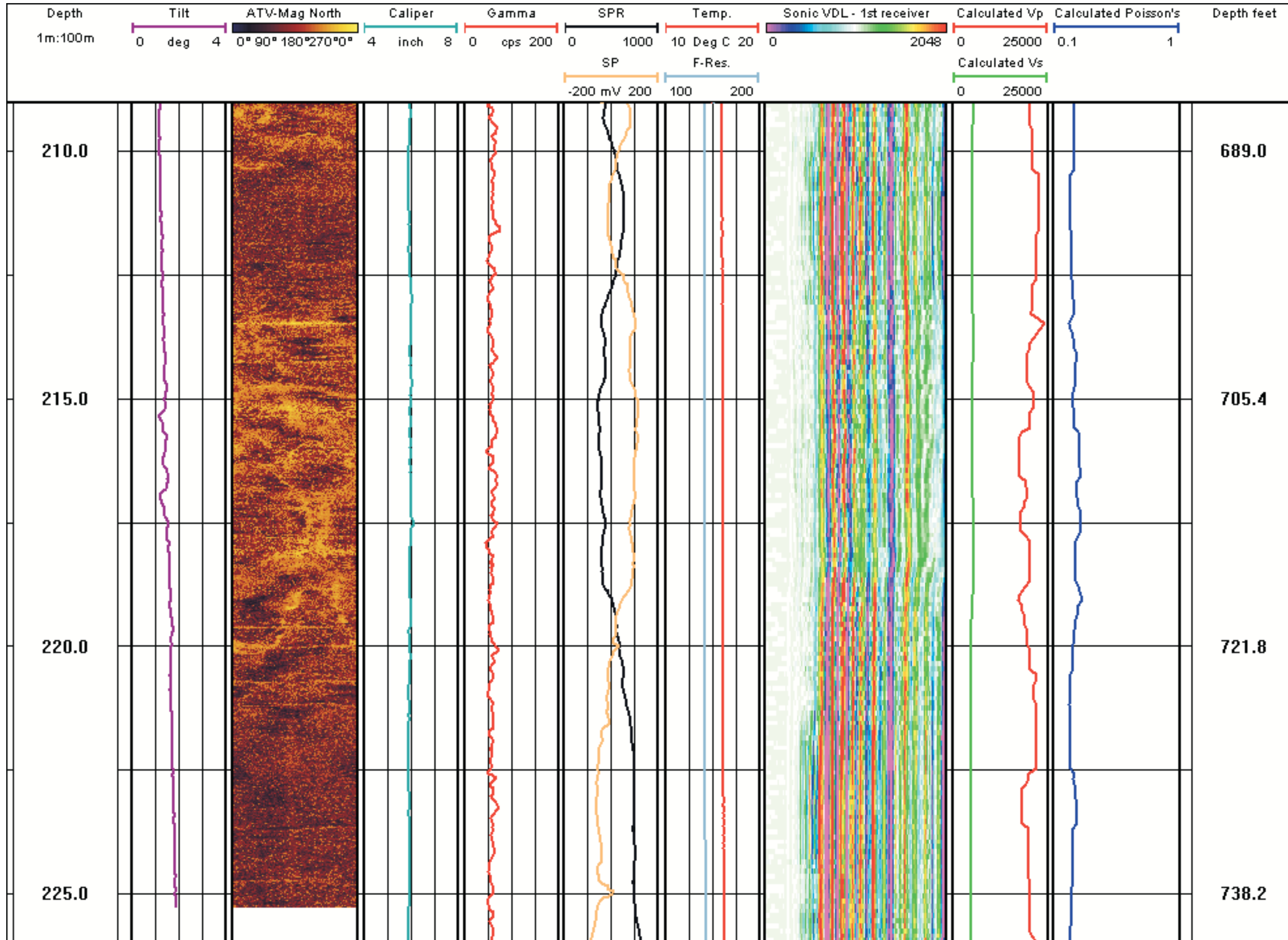


DRAWING NO. 0531011000fg24.fh11 DATE 03/29/06 DRAWN BY EL



INSTRUMENTATION
 Mount Sopris Instruments (MSI)
 MGX-II Logging System
 ALT ABI-40 Acoustic Televiewer
 3-Arm Caliper (MSI model 2PCA-1000)
 Natural Gamma, SP, SPR (MSI model 2PGA-1000)
 Fluid Temperature/Resistivity (MSI model 2PFA-1000)
 Full Waveform Sonic (MSI model 2SAA-1000/F)

NOTES
 1. Depths relative to top of casing

COORDINATES
 LATITUDE: 42 deg 30' 12.35" North
 LONGITUDE: 123 deg 22' 51.20" West

Golder Associates
 GOLDER ASSOCIATES INC.
 18300 NE UNION HILL ROAD, STE. 200
 REDMOND, WA USA 98052-3333
 TEL: (425) 883-0777
 FAX: (425) 882-5498
 EMAIL: dsylwester@golder.com
 mbenson@golder.com

SUBMITTED TO:
 UNAVCO

PROJECT:
 UNAVCO BOREHOLE LOG/OR

TITLE:
B035 DRILLED BOREHOLE

PROJECT	053-1011	DESIGN	DH	03/28/06
FILE No.	0531011000fg24.fh11	GPHX	EL	03/28/06
REV.	0	CHECK	-	-
SCALE	AS SHOWN	REVIEW	-	-

SHEET 09/09