

# B032 hergrt032bor2007

43.668 -123.3923 63.8 m

Phyllitic



Hammer Drilled 8" hole

top of cement

200 ft 88.3°

6" Casing

378 ft bottom of casing, 87.5°

**NOT TO SCALE**

*Cables not shown*

*all depths relative to top of casing*

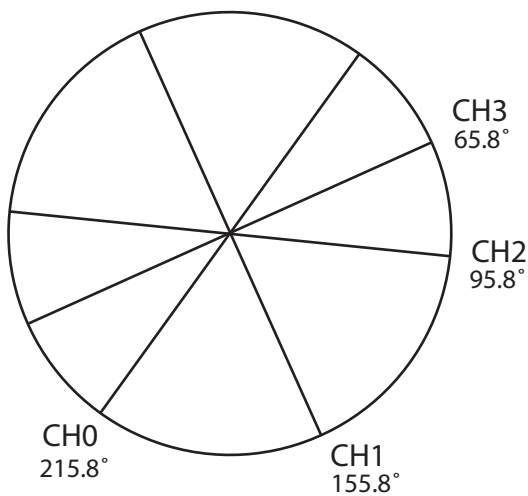
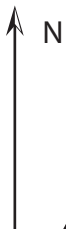
Last updated on February 20, 2008

Hammer Drilled 6" hole

440'

435 ft 88.2°

mudstone/shale



Tricone Drilled 6" hole

738 ft

740 ft

SEISMOMETER

764 ft

STRAINMETER

770 ft

T.D.

773 ft, inclination ??°