

# B933 mckem933bcn2008

40.0600 -123.9690 268.1 m

10 ft  
Sandstone with fine grained interbeds



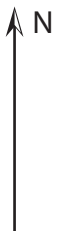
**NOT TO SCALE**

**Cables not shown  
all depths relative to top of casing**

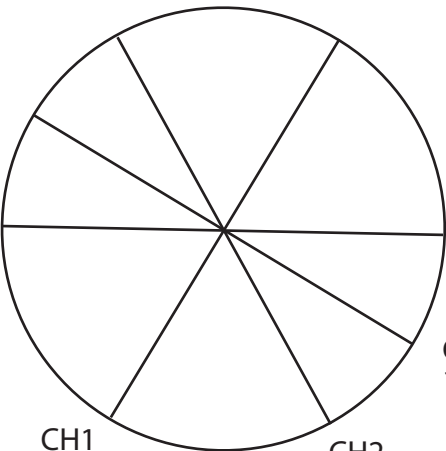
Last Updated 18 September 2008

The hole was producing some gas, which was odorless until hole was drilled below the casing.

Drilled through more sandstone with fine interbedded mudstones.



CH0  
271°



CH1  
211°

CH2  
151°

CH3  
121°

T.D.  
520 ft

