



5201 Woodmere Drive, Bakersfield, CA 93313-- www.welenco.com--(800) 445-9914
California Contractor's License No. 722373

ELECTRIC - GAMMA RAY - TEMPERATURE LOG

FILING NO.	COMPANY <u>UNAVCO</u>		
	WELL <u>B-082</u>		
	FIELD <u>Pathfinder Ranch</u>		
	STATE <u>California</u>	COUNTY <u>Riverside</u>	
	LOCATION: <u>Pathfinder Road</u>		OTHER SERVICES: <u>Caliper Televiwer Sonic</u>
JOB NO. 6001	SEC: <u>6</u> TWP: <u>7S</u> RGE: <u>4E</u> LAT.: <u>33° 35' 53.4"</u> LONG.: <u>116° 35' 45.6"</u> MERIDIAN.: <u>San Bernardino</u>		

Permanent Datum: Ground Level, Elev. 4595 Ft. Elev.: K.B. _____ Ft.
 Log Measured From: Ground Level, 0 Ft. Above Perm. Datum D.F. _____ Ft.
 Drilling Measured From: Ground Level G.L. 4595 Ft.

Run No.	One			
Date	May. 09, 2006			
Depth-Driller	800	Ft	Ft	Ft
Depth-Logger	798	Ft	Ft	Ft
Top Logged Interval	560	Ft	Ft	Ft
Btm. Logged Interval	797	Ft	Ft	Ft
Casing-Driller	6	In @ 580	Ft	In @ Ft In @ Ft In @ Ft
Casing-Logger	6	In @ 575	Ft	In @ Ft In @ Ft In @ Ft
Bit Size	6	In	In	In In
Time On Bottom	8:40 AM			
Type Fluid In Hole	Water			
Density	Viscosity			
pH	Fluid Loss	ml	ml	ml ml
Source of Sample	N/A			
Rm @ Measured Temp.	N/A	@ °F	@ °F	@ °F @ °F
Rmf @ Measured Temp.	N/A	@ °F	@ °F	@ °F @ °F
Rmc @ Measured Temp.		@ °F	@ °F	@ °F @ °F
Source Rmf	Rmc	N/A		
Rm @ BHT		@ °F	@ °F	@ °F @ °F
Time Since Circulation	N/A	Hr	Hr	Hr Hr
Max. Rec. Temp.	77.2	°F	°F	°F °F
Van No.	Location	LV-1	Bfld	
Recorded By	Dan Ihde			
Witnessed By	Sarah Venator			

Miscellaneous Information

Latitude, Longitude & Elevation values were determined using a recreational GPS accurate to +/- 45 feet. The Section, Township, and Range then determined using the TRS conversion program (TRS accuracy is not guaranteed). The NOTICE at the bottom of this heading applies.

NOTICE

All interpretations are opinions based on inferences from electrical and other measurements and we do not guarantee the accuracy or correctness of any verbal or written interpretation, and we shall not, except in the case of gross or willful negligence on our part, be liable or responsible for any loss, costs, damages or expenses incurred or sustained by anyone resulting from any interpretation made by one of our officers, agents or employees. These interpretations are also subject to our General Terms and Conditions as set out in our current Price Schedule.
welenco, inc. May 09, 2006

DEPTHS
Single Page

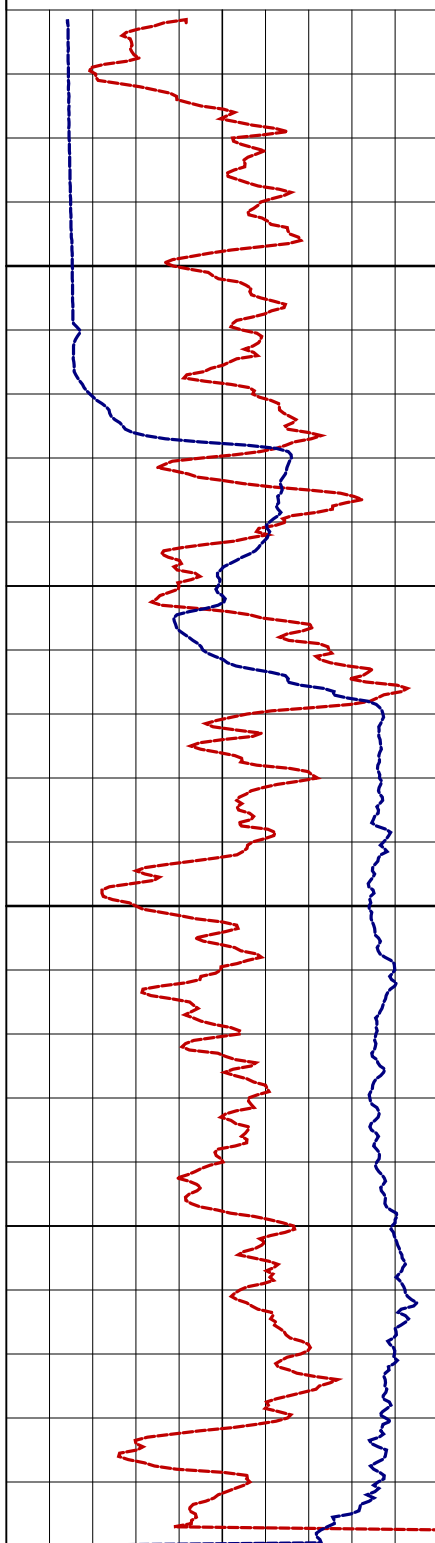
ELECTRIC - GAMMA RAY - TEMPERATURE LOG

< - S.P. (15 mV/div) + >

0 64 Inch Normal (ohmmeter²/m) 4000 | 100 Single Point (ohms) 800

0 Gamma Ray (api) 350

0 16 Inch Normal (ohmmeter²/m) 4000 | 73 Temperature (°F) 78



600

650

700

750

800

