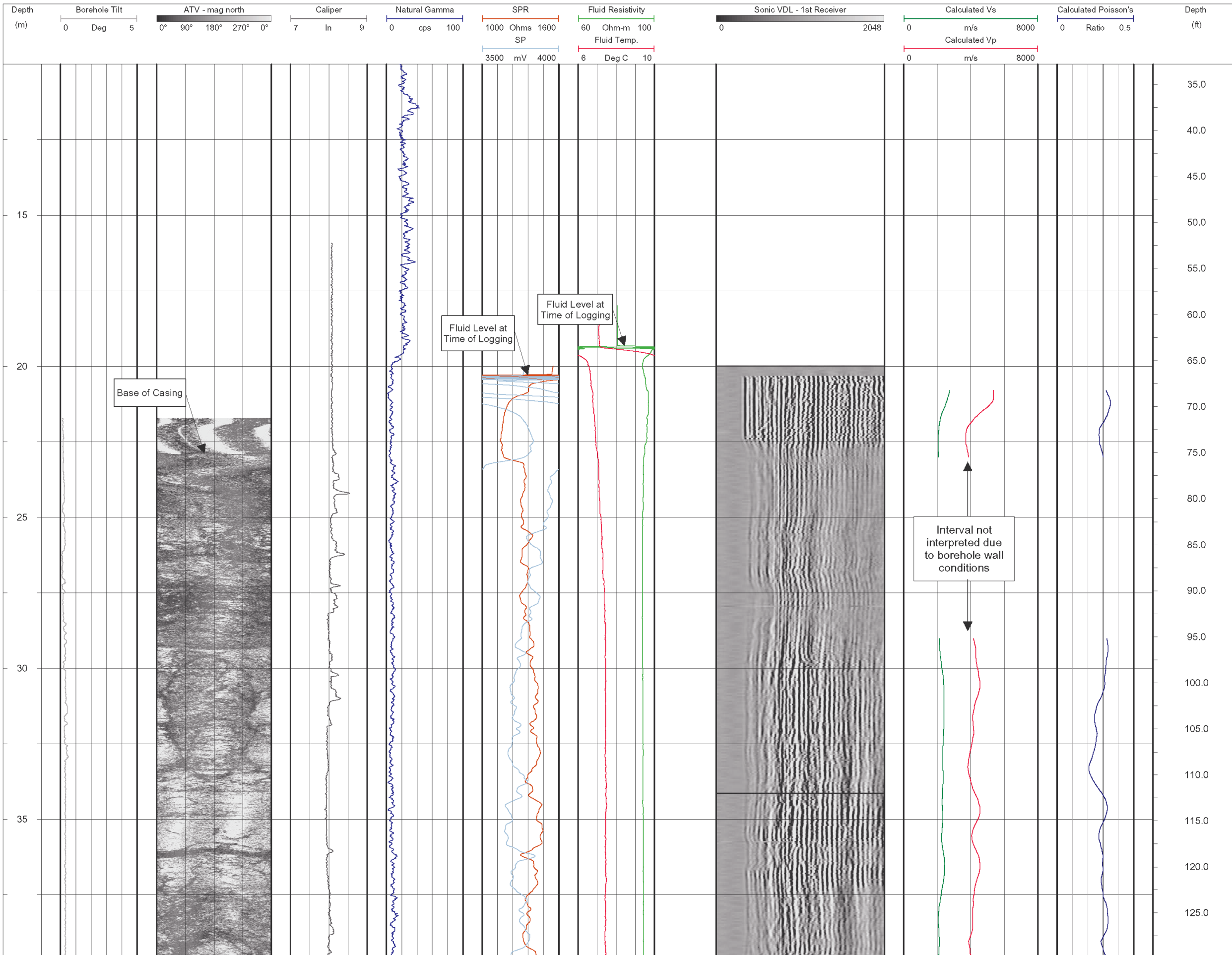
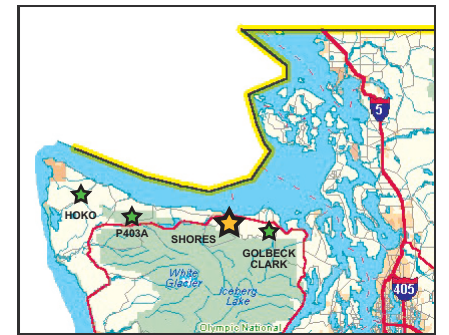


DRAWING NO. 0431326001fg30.fh11 DATE 04/07/05 DRAWN BY EL



KEY MAP



INSTRUMENTATION

Mount Sopris Instruments (MSI)
 MGX-II Logging System
 ALT ABI-40 Acoustic Televiewer
 3-Arm Caliper (MSI model 2PCA-1000)
 Natural Gamma, SP, SPR (MSI model 2PGA-1000)
 Fluid Temperature/Resistivity (MSI model 2PFA-1000)
 Full Waveform Sonic (MSI model 2SAA-1000/F)

NOTES

1. Depths relative to ground surface
2. Vertical boreholes drilled with 8" air rotary bit

COORDINATES

LATITUDE: N48.05811
 LONGITUDE: W123.50409



GOLDER ASSOCIATES INC.
 18300 NE UNION HILL ROAD, STE. 200
 REDMOND, WA USA 98052-3333
 TEL: (425) 883-0777
 FAX: (425) 882-5498
 EMAIL: dsylwester@golder.com
 hcrow@golder.com

SUBMITTED TO:

UNAVCO

PROJECT:

EARTHSCOPE BOREHOLE LOG/WA

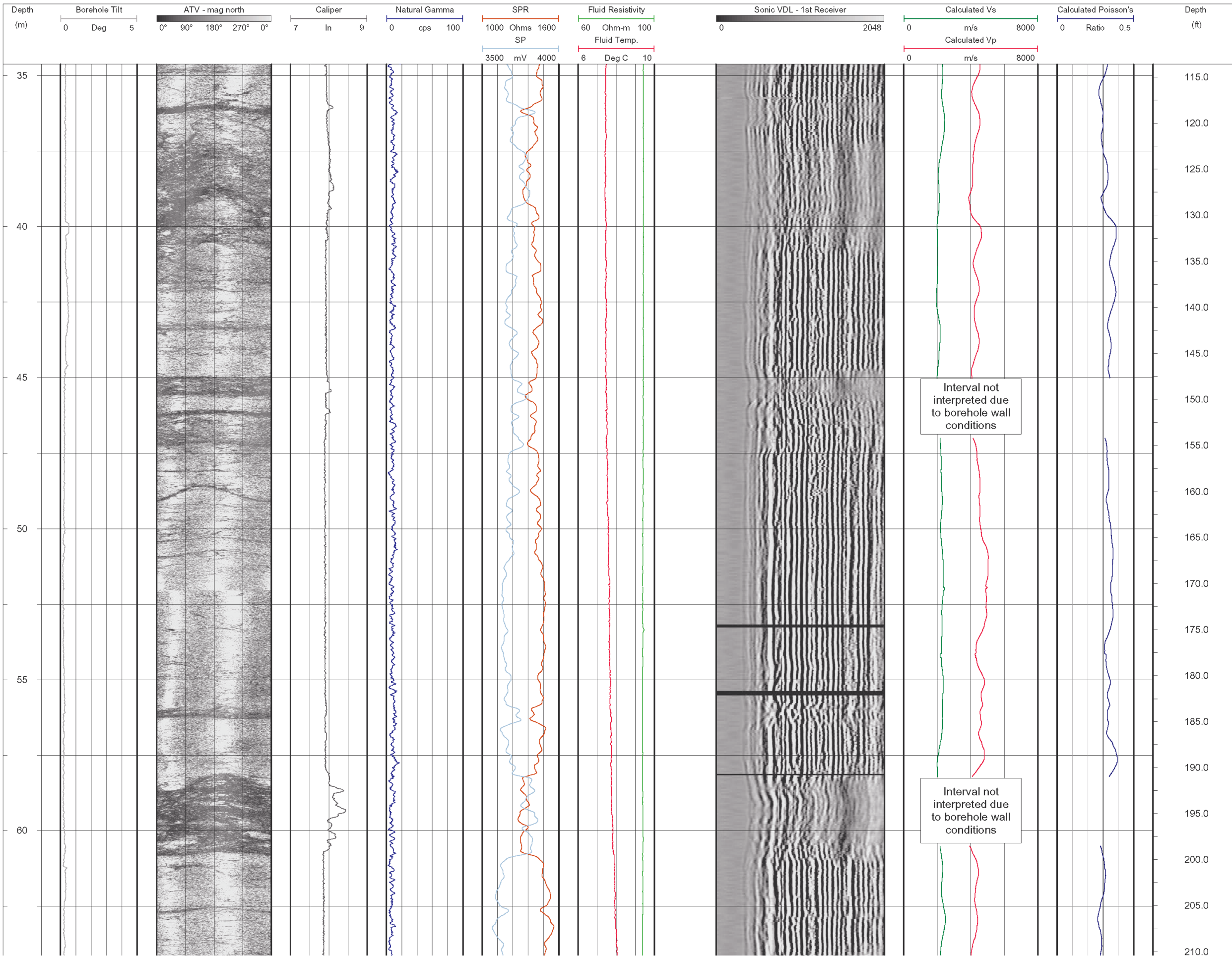
TITLE:

SHORE-3: ROTARY DRILLED BOREHOLE

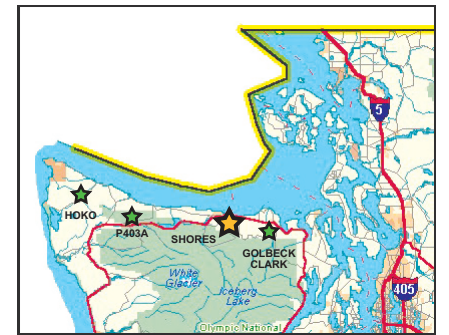
PROJECT	043-1326	DESIGN	HC	02/03/05
FILE No.	0431326004fg30.fh11	GPHX	EL	04/07/05
REV.	0	CHECK	-	-
SCALE	AS SHOWN	REVIEW	-	-

SHEET 01/03

DRAWING NO. 0431326001fg31.fh11 DATE 04/07/05 DRAWN BY EL



KEY MAP



INSTRUMENTATION

Mount Sopris Instruments (MSI)
 MGX-II Logging System
 ALT ABI-40 Acoustic Televiewer
 3-Arm Caliper (MSI model 2PCA-1000)
 Natural Gamma, SP, SPR (MSI model 2PGA-1000)
 Fluid Temperature/Resistivity (MSI model 2PFA-1000)
 Full Waveform Sonic (MSI model 2SAA-1000/F)

NOTES

1. Depths relative to ground surface
2. Vertical boreholes drilled with 8" air rotary bit

COORDINATES

LATITUDE: N48.05811
 LONGITUDE: W123.50409



GOLDER ASSOCIATES INC.
 18300 NE UNION HILL ROAD, STE. 200
 REDMOND, WA USA 98052-3333
 TEL: (425) 883-0777
 FAX: (425) 882-5498
 EMAIL: dsylwester@golder.com
 hcrow@golder.com

SUBMITTED TO:

UNAVCO

PROJECT:

EARTHSCOPE BOREHOLE LOG/WA

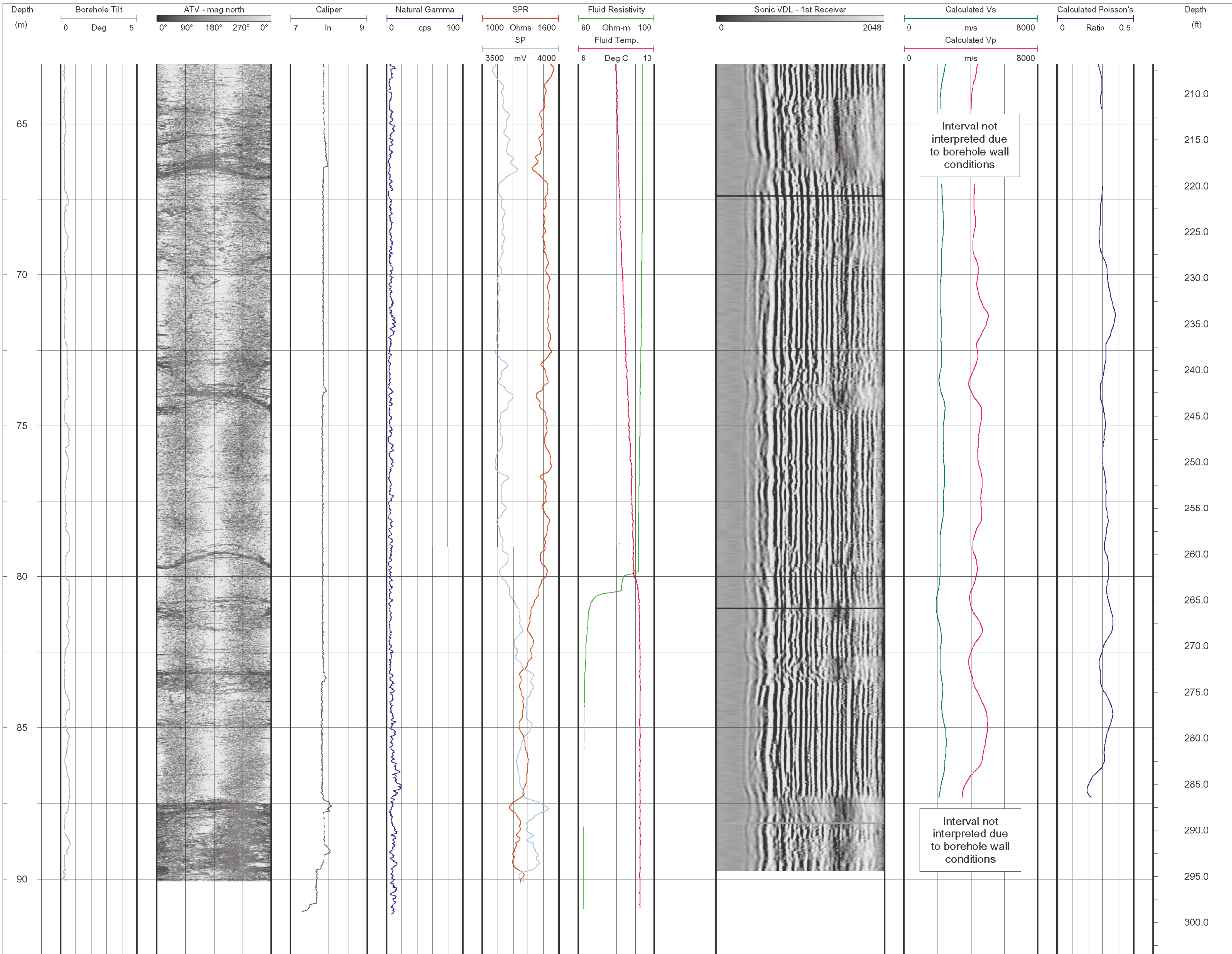
TITLE:

SHORE-3: ROTARY DRILLED BOREHOLE

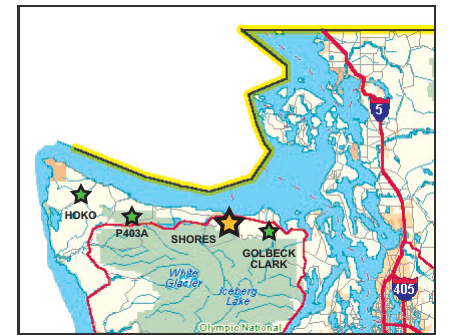
PROJECT	043-1326	DESIGN	HC	02/03/05
FILE No.	0431326004fg31.fh11	GPHX	EL	04/07/05
REV.	0	CHECK	-	-
SCALE	AS SHOWN	REVIEW	-	-

SHEET 02/03

DRAWING NO. 0431326001fg32.fh11 DATE 04/07/05 DRAWN BY EL



KEY MAP



INSTRUMENTATION

Mount Sopris Inuments (MSI)
 MGX-II Logging System
 ALT ABI-40 Acoustic Televiewer
 3-Arm Caliper (MSI model 2PCA-1000)
 Natural Gamma, SP, SPR (MSI model 2PGA-1000)
 Fluid Temperature/Resistivity (MSI model 2PFA-1000)
 Full Waveform Sonic (MSI model 2SAA-1000/F)

NOTES

1. Depths relative to ground surface
2. Vertical boreholes drilled with 8" air rotary bit

COORDINATES

LATITUDE: N48.05811
 LONGITUDE: W123.50409



GOLDER ASSOCIATES INC.
 18300 NE UNION HILL ROAD, STE. 200
 REDMOND, WA USA 98052-3333
 TEL: (425) 883-0777
 FAX: (425) 882-5498
 EMAIL: dsylwester@golder.com
 hcrow@golder.com

SUBMITTED TO:

UNAVCO

PROJECT:

EARTHSCOPE BOREHOLE LOG/WA

TITLE:

SHORE-3: ROTARY DRILLED BOREHOLE

PROJECT	043-1326	DESIGN	HC	02/03/05
FILE No.	0431326004fg32.fh11	GPHX	EL	04/07/05
REV.	0	CHECK	-	-
SCALE	AS SHOWN	REVIEW	-	-