



5201 Woodmere Drive, Bakersfield, CA 93313-- www.welenco.com--(800) 445-9914  
California Contractor's License No. 722373

## ELECTRIC - GAMMA RAY - 3ARM CAL LOG

|                        |   |                              |   |
|------------------------|---|------------------------------|---|
| FILING NO.             | COMPANY <u>UNAVCO</u>   |                              |   |
|                        | WELL <u>China Lake NWC B-917</u>  |                              |   |
|                        | FIELD <u>Ridgecrest</u>   |                              |   |
|                        | STATE <u>California</u>   | COUNTY <u>San Bernardino</u> |   |
|                        | LOCATION:<br><u>China Lake NWC South Range</u>  |                              | OTHER SERVICES:<br><u>HIRAT<br/>SONIC</u> |
| JOB NO.<br><b>8740</b> | SEC: <u>15</u> TWP: <u>29S</u> RGE: <u>44E</u> LAT.: <u>35° 24' 19.5"</u> LONG.: <u>117° 15' 28.3"</u> MERIDIAN.: <u>Mt. Diablo</u> |                              |   |

Permanent Datum: Top of Casing, Elev. 3900 Ft. Elev.: K.B. \_\_\_\_\_ Ft.  
 Log Measured From: Top of Casing, 0 Ft. Above Perm. Datum D.F. \_\_\_\_\_ Ft.  
 Drilling Measured From: Ground Level G.L. 3900 Ft.

|                        |                      |                 |            |      |    |      |    |
|------------------------|----------------------|-----------------|------------|------|----|------|----|
| Run                    | <b>One</b>           |                 |            |      |    |      |    |
| Date                   | <b>Jun. 26, 2008</b> |                 |            |      |    |      |    |
| Depth-Driller          | <b>800</b>           | Ft              |            | Ft   |    | Ft   | Ft |
| Depth-Logger           | <b>795</b>           | Ft              |            | Ft   |    | Ft   | Ft |
| Top Logged Interval    | <b>400</b>           | Ft              |            | Ft   |    | Ft   | Ft |
| Btm. Logged Interval   | <b>795</b>           | Ft              |            | Ft   |    | Ft   | Ft |
| Casing-Driller         | <b>6</b>             | In @ <b>410</b> | Ft         | In @ | Ft | In @ | Ft |
| Casing-Logger          | <b>6</b>             | In @ <b>410</b> | Ft         | In @ | Ft | In @ | Ft |
| Bit Size               | <b>6</b>             | In              |            | In   |    | In   | In |
| Time On Bottom         | <b>0845</b>          |                 |            |      |    |      |    |
| Type Fluid In Hole     | <b>Water</b>         |                 |            |      |    |      |    |
| Density                | Viscosity            |                 |            |      |    |      |    |
| pH                     | Fluid Loss           |                 |            |      |    |      |    |
|                        |                      |                 | ml         |      | ml |      | ml |
| Source of Sample       | <b>PIT</b>           |                 |            |      |    |      |    |
| Rm @ Measured Temp.    | <b>10.4</b>          | @ <b>75</b>     | °F         | @    | °F | @    | °F |
| Rmf @ Measured Temp.   | <b>8.3</b>           | @ <b>75</b>     | °F         | @    | °F | @    | °F |
| Rmc @ Measured Temp.   |                      | @               | °F         | @    | °F | @    | °F |
| Source Rmf             | <b>meas.</b>         |                 |            |      |    |      |    |
| Rm @ BHT               |                      | @               | °F         | @    | °F | @    | °F |
| Time Since Circulation |                      |                 | Hr         |      | Hr |      | Hr |
| Max. Rec. Temp.        |                      |                 | °F         |      | °F |      | °F |
| Van No.                | <b>L-18</b>          | Location        | <b>SVG</b> |      |    |      |    |
| Recorded By            | <b>Mitch Tullis</b>  |                 |            |      |    |      |    |
| Witnessed By           | <b>Steve</b>         |                 |            |      |    |      |    |

## Miscellaneous Information

A recreational GPS accurate to +/- 45 feet set for Datum NAD27 was used to calculate Latitude, Longitude & Elevation values. The Section, Township, and Range then determined using the TRS program (TRS accuracy is not guaranteed). The TRS program converts Latitude and Longitude to Section, Township, and Range. The NOTICE at the bottom of this heading also applies.

Drilled By: Steves Pump & Well Drilling

### NOTICE

All interpretations are opinions based on inferences from electrical and other measurements and we do not guarantee the accuracy or correctness of any verbal or written interpretation, and we shall not, except in the case of gross or willful negligence on our part, be liable or responsible for any loss, costs, damages or expenses incurred or sustained by anyone resulting from any interpretation made by one of our officers, agents or employees. These interpretations are also subject to our General Terms and Conditions as set out in our current Price Schedule.  
*welenco, inc. June 26, 2008*

ELECTRIC - GAMMA RAY - 3ARM CAL LOG

DEPTHS

5 in/100ft

< - S.P. (10 mV/div) + >

0 64 Inch Normal (ohmmeter<sup>2</sup>/m) x10 5000

0 64 Inch Normal (ohmmeter<sup>2</sup>/m) 500

0 16 Inch Normal (ohmmeter<sup>2</sup>/m) x10 5000

2 3-Arm Caliper (inches)

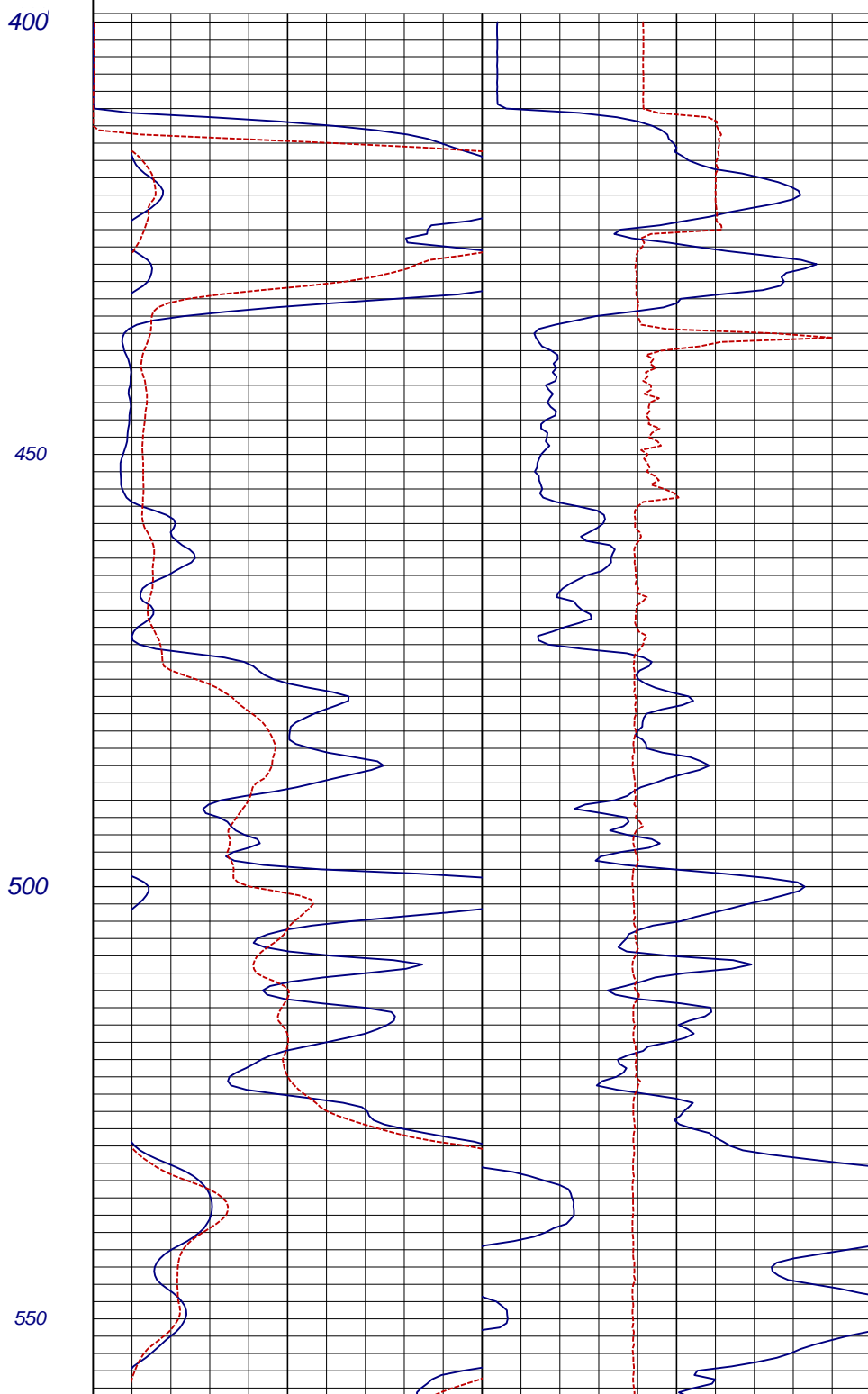
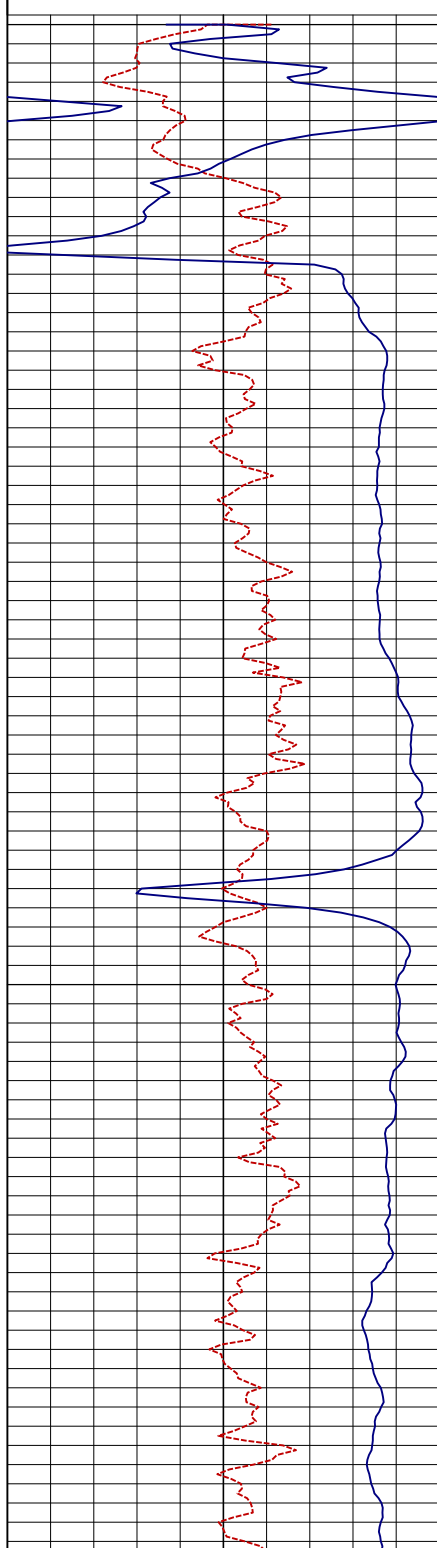
12

0 16 Inch Normal (ohmmeter<sup>2</sup>/m) 500

0 Single Point (ohms)

300

0 Gamma Ray (api) 200



ELECTRIC - GAMMA RAY - 3ARM CAL LOG

DEPTHS

5 in/100ft

< - S.P. (10 mV/div) + >

0 64 Inch Normal (ohmmeter<sup>2</sup>/m) x10 5000

0 64 Inch Normal (ohmmeter<sup>2</sup>/m) 500

0 16 Inch Normal (ohmmeter<sup>2</sup>/m) x10 5000

2 3-Arm Caliper (inches)

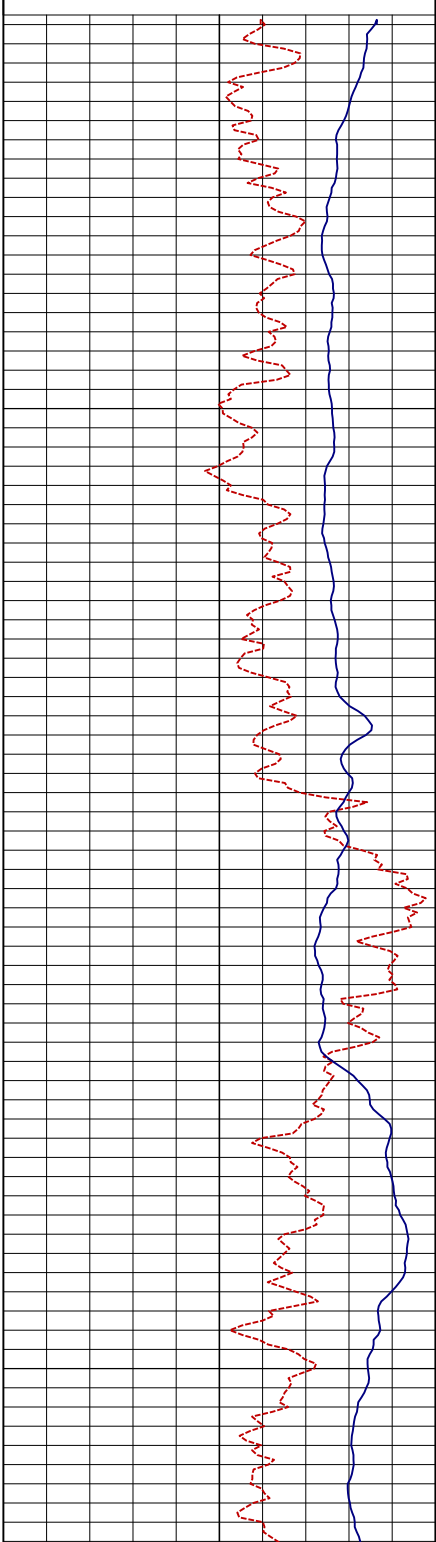
12

0 Gamma Ray (api) 200

0 16 Inch Normal (ohmmeter<sup>2</sup>/m) 500

0 Single Point (ohms)

300



600

650

700

