



5201 Woodmere Drive, Bakersfield, CA 93313-- www.welenco.com--(800) 445-9914  
California Contractor's License No. 722373

**ELECTRIC - GAMMA RAY - 3 ARM CAL LOG**

FILING NO.	COMPANY	UNAVCO		
	WELL	China Lake NWC B-917		
	FIELD	China Lake		
	STATE	California	COUNTY	San Bernardino
JOB NO. 8737	LOCATION:			OTHER SERVICES: EL-GR HIRAT SONIC
	SEC: 15 TWP: 29S RGE: 44E LAT.: 35° 24' 19.5" LONG.: 117° 15' 28.3" MERIDIAN.: Mt. Diablo			

Permanent Datum: **Top of Casing**, Elev. **3900** Ft. Elev.: K.B. \_\_\_\_\_ Ft.  
 Log Measured From: **Top of Casing**, **0** Ft. Above Perm. Datum D.F. \_\_\_\_\_ Ft.  
 Drilling Measured From: **Ground Level** G.L. **3900** Ft.

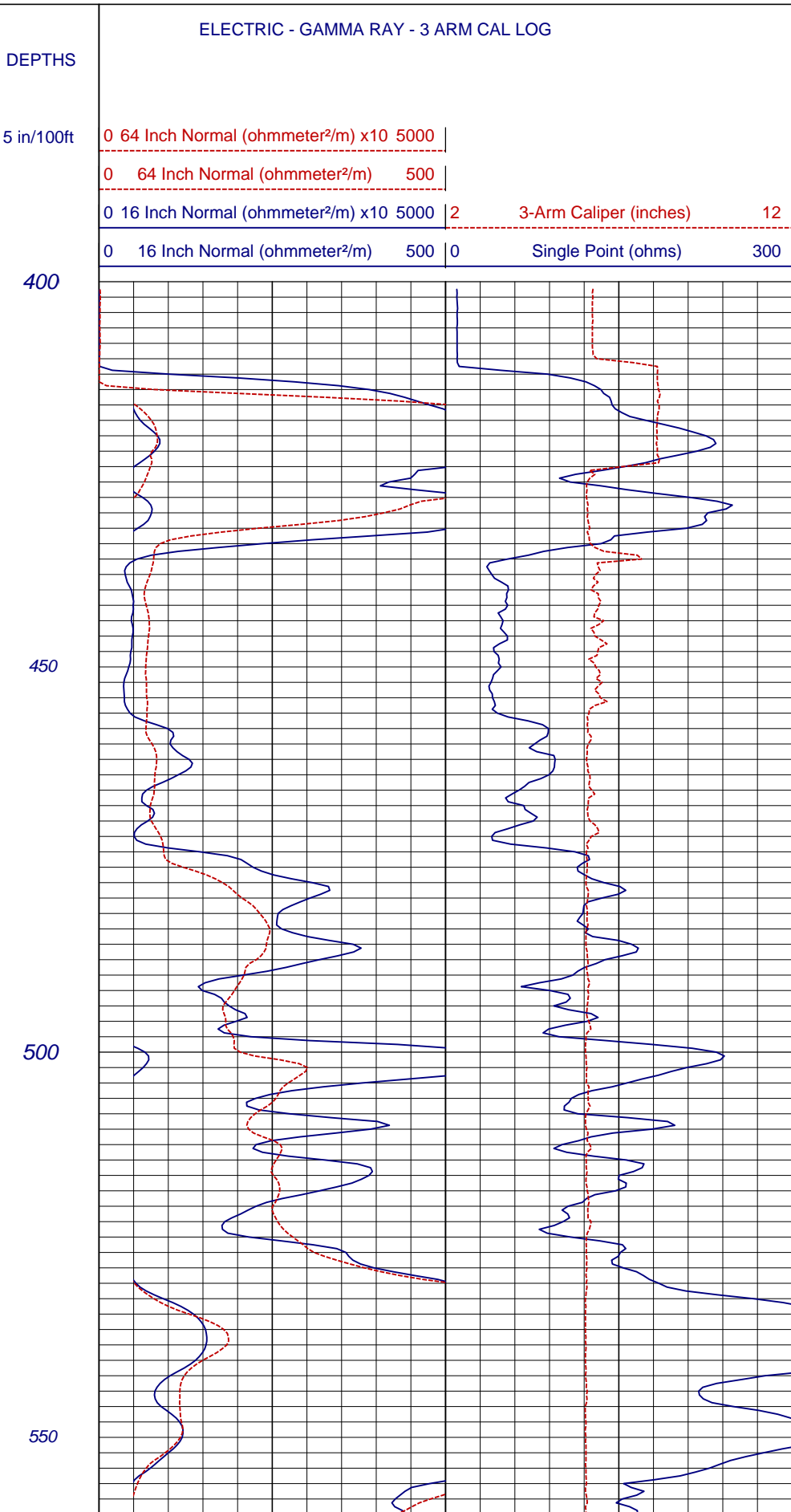
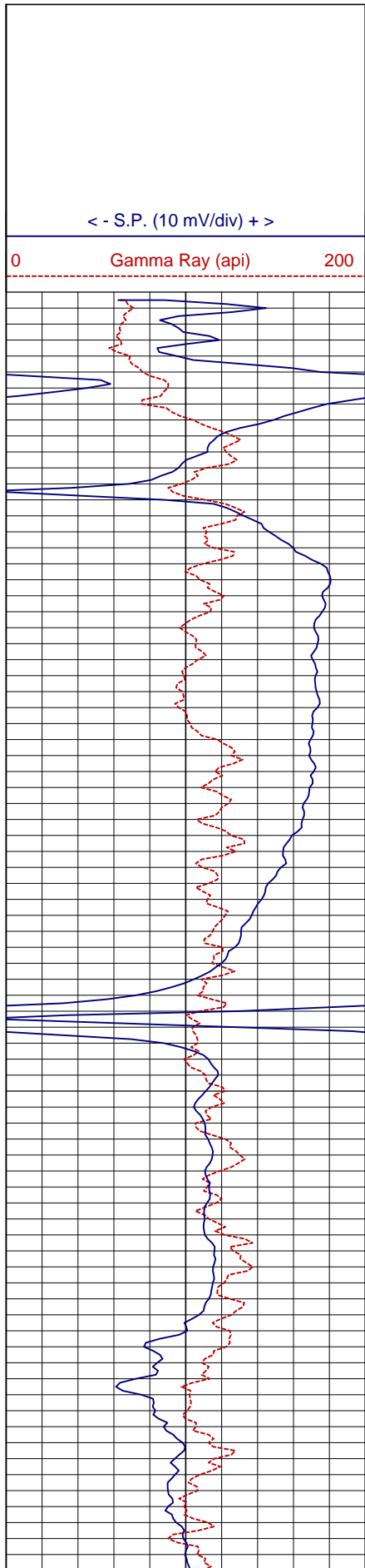
Run	<b>One</b>						
Date	<b>Jun. 24, 2008</b>						
Depth-Driller	<b>610</b>	Ft		Ft		Ft	Ft
Depth-Logger	<b>607</b>	Ft		Ft		Ft	Ft
Top Logged Interval	<b>400</b>	Ft		Ft		Ft	Ft
Btm. Logged Interval	<b>607</b>	Ft		Ft		Ft	Ft
Casing-Driller	<b>6</b>	In @ <b>410</b>	Ft	In @	Ft	In @	Ft
Casing-Logger	<b>6</b>	In @ <b>415</b>	Ft	In @	Ft	In @	Ft
Bit Size	<b>6</b>	In		In		In	In
Time On Bottom							
Type Fluid In Hole	<b>Water</b>						
Density	Viscosity						
pH	Fluid Loss		ml		ml		ml
Source of Sample	<b>N/A</b>						
Rm @ Measured Temp.	<b>N/A</b>	@	°F	@	°F	@	°F
Rmf @ Measured Temp.	<b>N/A</b>	@	°F	@	°F	@	°F
Rmc @ Measured Temp.		@	°F	@	°F	@	°F
Source Rmf	Rmc						
Rm @ BHT		@	°F	@	°F	@	°F
Time Since Circulation			Hr		Hr		Hr
Max. Rec. Temp.			°F		°F		°F
Van No.	Location	<b>L-18</b>	<b>SVG</b>				
Recorded By	<b>Mitch Tullis</b>						
Witnessed By							

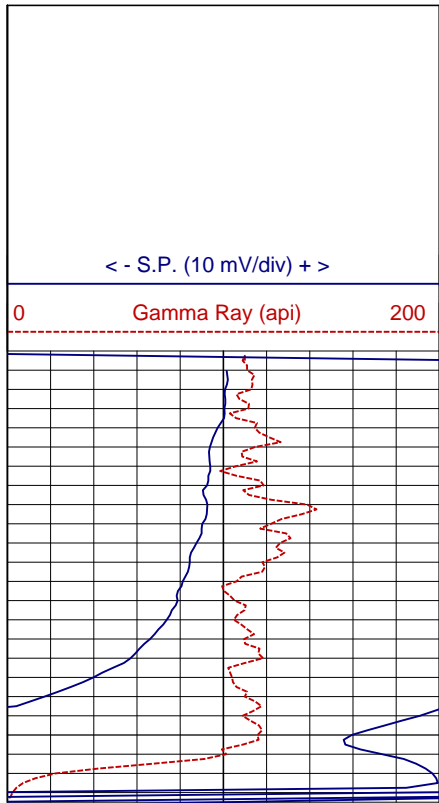
## Miscellaneous Information

A recreational GPS accurate to +/- 45 feet set for Datum NAD27 was used to calculate Latitude, Longitude & Elevation values. The Section, Township, and Range then determined using the TRS program (TRS accuracy is not guaranteed). The TRS program converts Latitude and Longitude to Section, Township, and Range. The NOTICE at the bottom of this heading also applies.

### NOTICE

All interpretations are opinions based on inferences from electrical and other measurements and we do not guarantee the accuracy or correctness of any verbal or written interpretation, and we shall not, except in the case of gross or willful negligence on our part, be liable or responsible for any loss, costs, damages or expenses incurred or sustained by anyone resulting from any interpretation made by one of our officers, agents or employees. These interpretations are also subject to our General Terms and Conditions as set out in our current Price Schedule.  
*welenco, inc. June 24, 2008*





Log Page No. 2 of 2 Pages

ELECTRIC - GAMMA RAY - 3 ARM CAL LOG

DEPTHS

5 in/100ft

0 64 Inch Normal (ohmmeter<sup>2</sup>/m) x10 5000

0 64 Inch Normal (ohmmeter<sup>2</sup>/m) 500

0 16 Inch Normal (ohmmeter<sup>2</sup>/m) x10 5000

0 16 Inch Normal (ohmmeter<sup>2</sup>/m) 500

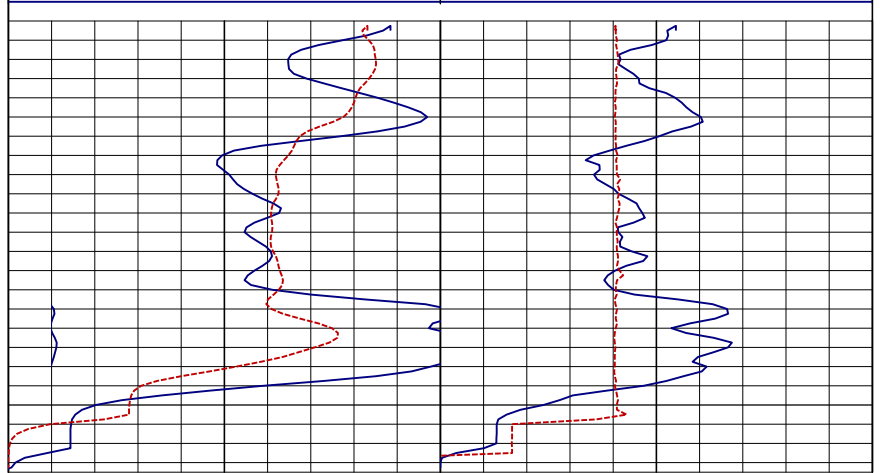
3-Arm Caliper (inches)

Single Point (ohms)

12

300

600



Page Length: 560 - 607 Feet (47 Feet)

Time: 02:32:50 PM

Date: Jun 24, 2008